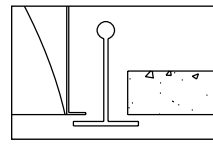
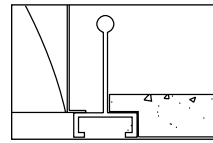


**Ceiling compatibility**



Suited to standard exposed T-grid ceilings



Suited to standard exposed Slot T-grid ceilings



### Ordering information

QVS	2	G	PT						
Quality Visual Static	Luminaire Width	Ceiling Type	Lamp Shield		Lamp Quantity	Lamp	Voltage	Ballast Type	Options
Recessed direct indirect soft light optical system	2'	G = Standard exposed T-grid ceilings	PT = Metallic Reflector / Micro-perforated mesh lamp shield		2 = 2 Lamp 3 = 3 Lamp 4 = 4 Lamp (FT only)	28 = 28WT5 54 = 54WT5HO 32 = 32WT8 FT = TT5 Bi-Tube	UNV 120 277 347	<b>T5/T5HO</b> PG = Electronic Linear T5/T5HO Program Start (<10% THD) <b>T8</b> SO = Electronic T8 Instant Start (<20% THD) RO = Electronic T8 Rapid Start (<10% THD) HI = Electronic T8 Instant Start (<10% THD) O3 = 3 Lamp Electronic T8 Instant Start (<20% THD) H3 = 3 Lamp Electronic T8 Instant Start (<10% THD) <b>TT5</b> SB = 40W Electronic TT5 Instant Start or Rapid Start (<20% THD) BE = 50W Electronic TT5 Rapid Start (<20% THD) BF = 55W Electronic TT5 Rapid Start (<10% THD) <b>For Dimming Ballast Suffix, please consult your Lightolier Representative.</b>	F = Internal Fusing (Canada) GLR = Internal Fusing (USA) FK92X4 = Drywall Kit for Plaster Frames EM = T8/TT5/T5/T5HO Emergency Lighting System (USA) O = T8/TT5 Emergency Lighting System (Canada) E = T5/T5HO Emergency Lighting System (Canada) QVS-HD = Alter Hold Down Clips (Std 15/16" only) QVS24DG = 2'x4' Dust and Germ Guard
			<b>Clear Polished Acrylic Drop Down Visual Element</b> OS = Open slot (no acrylic) lamp shield OP = One piece (no center slot) lamp shield GC = Clear acrylic GG = Clear acrylic / Green projected color face GB = Clear acrylic / Blue projected color face GR = Clear acrylic / Red projected color face						

### Features

- Efficiency 44.8%
- Swing down microperforated lamp shield for easy relamping and maintenance
- Semi-specular aluminum reflectors with lengthwise ridges
- Alter soft white film on inside of mesh conceals lamp image providing balance between reflected and direct light
- Fully recessed luminaire and lamp compartment
- 95% Reflective Alter soft white paint finish
- One piece body for easy installation
- Easy access to ballast through lamp compartment
- Fits standard T-Grid or drywall ceilings
- Optional acrylic drop-down visual element

### Material

One piece chassis constructed from die formed 20 gauge cold rolled steel.  
**Reflectors** - 95% reflectance baked white acrylic matte paint finish. Soft white acrylic film on inside of lamp shield conceals lamp image.

### Finish

**Chassis exterior** - phosphate undercoating, baked white acrylic matte high reflectance paint finish.

### Electrical

Rapid start HPF, thermally protected class "P" ballast. If K.O.s are within 3" of ballast use wire suitable for at least 90C. Suitable for damp location.

### Labels

Listed by CSA, UL.

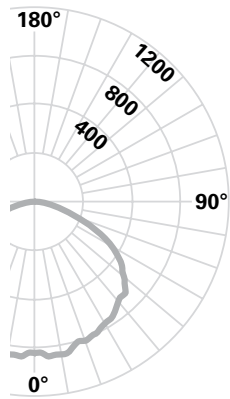
Job Information	Type:
<b>Job Name:</b>	
<b>Cat. No.:</b>	
<b>Lamp(s):</b>	
<b>Notes:</b>	

**Lightolier** [www.lightolier.com](http://www.lightolier.com)  
 631 Airport Road, Fall River, MA 02720 • (508) 679-8131 • Fax (508) 674-4710  
 We reserve the right to change details of design, materials and finish.  
 © 2008 Philips Group • **QVS2x4PTOS.pdf**

**Canlyte** [www.canlyte.com](http://www.canlyte.com)  
 3015 Louis-Amos, Lachine, Québec H8T 1C4 • (514) 636-0670 • (514) 636-0460

## Performance

### CANDLEPOWER CURVE 232



ZONE DEG	CANDLEPOWER				
	ALONG	22.5	45	67.5	ACROSS
0	907	907	907	907	907
5	906	907	909	911	925
10	886	905	916	929	924
15	859	877	904	894	896
20	817	855	866	870	882
25	761	807	817	841	868
30	707	742	773	830	842
35	635	666	745	795	819
40	567	598	692	760	783
45	498	523	629	722	775
50	415	463	580	686	707
55	340	400	518	618	636
60	270	334	445	520	539
65	217	270	365	416	415
70	168	213	278	283	272
75	105	147	156	154	162
80	68	82	67	85	91
85	27	24	28	24	25
90	3	5	6	0	0

REPORT NO: LSC9503  
 CAT. NO: QVS2GPTOS232120SO  
 2 32W T8 Fluorescent Lamps at 2950 lumens.  
 Efficiency: 44.8%  
 Candela at Nadir: 907cd

### COEFFICIENTS OF UTILIZATION

ZONAL CAVITY METHOD \* EFFECTIVE FLOOR CAVITY REFLECTANCE = .20

Room Cavity Ratio	Wall Reflectance											
	80				70				50			
	70	50	30	10	70	50	30	10	50	30	10	
0	.53	.53	.53	.53	.52	.52	.52	.52	.50	.50	.50	
1	.49	.47	.45	.44	.48	.46	.45	.43	.44	.43	.42	
2	.45	.42	.39	.36	.44	.41	.38	.36	.39	.37	.35	
3	.41	.37	.33	.31	.40	.36	.33	.30	.35	.32	.30	
4	.38	.33	.29	.26	.37	.32	.29	.26	.31	.28	.26	
5	.35	.29	.25	.22	.34	.28	.25	.22	.27	.24	.22	
6	.32	.26	.22	.19	.31	.25	.22	.19	.25	.21	.19	
7	.29	.23	.19	.17	.28	.23	.19	.16	.22	.19	.16	
8	.27	.21	.17	.14	.26	.20	.17	.14	.20	.16	.14	
9	.25	.19	.15	.12	.24	.18	.15	.12	.18	.15	.12	
10	.23	.17	.13	.11	.22	.17	.13	.11	.16	.13	.11	

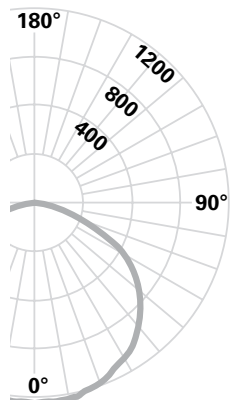
DETERMINED IN ACCORDANCE WITH CURRENT IES PUBLISHED PROCEDURES  
 LUMINAIRE INPUT WATTS = 57.1

### DISTRIBUTION

ZONE	LUMENS	% LAMP	%LUMINAIRE
0-30	717	12.15	27.11
0-40	1175	19.93	44.46
0-60	2109	35.75	79.76
0-90	2644	44.83	100.00
40-90	1468	24.90	55.54
60-90	535	9.07	20.24
90-180	0	.00	.00
0-180	2644	44.83	100.00

## Performance

### CANDLEPOWER CURVE 332



ZONE DEG	CANDLEPOWER				
	ALONG	22.5	45	67.5	ACROSS
0	1273	1273	1273	1273	1273
5	1266	1267	1271	1266	1263
10	1233	1250	1263	1253	1258
15	1197	1205	1223	1234	1236
20	1142	1157	1182	1203	1216
25	1065	1086	1143	1174	1180
30	984	1010	1068	1120	1138
35	881	930	1000	1083	1094
40	785	833	921	1007	1028
45	680	728	836	929	952
50	576	627	742	849	875
55	462	542	657	750	774
60	376	443	556	634	655
65	292	352	448	494	505
70	226	278	336	341	321
75	156	193	193	178	193
80	92	104	93	116	106
85	44	47	41	43	35
90	0	5	5	4	2

REPORT NO: LSC9504  
 CAT. NO: QVS2GPTOS33212003  
 3 32W T8 Fluorescent Lamps at 2950 lumens.  
 Efficiency: 39.4%  
 Candela at Nadir: 1273cd

### COEFFICIENTS OF UTILIZATION

ZONAL CAVITY METHOD \* EFFECTIVE FLOOR CAVITY REFLECTANCE = .20

Room Cavity Ratio	Wall Reflectance											
	80				70				50			
	70	50	30	10	70	50	30	10	50	30	10	
0	.47	.47	.47	.47	.46	.46	.46	.46	.44	.44	.44	
1	.43	.42	.40	.39	.42	.41	.39	.38	.39	.38	.37	
2	.40	.37	.34	.32	.39	.36	.34	.32	.35	.33	.31	
3	.36	.33	.30	.27	.35	.32	.29	.27	.31	.28	.27	
4	.33	.29	.26	.23	.33	.29	.26	.23	.28	.25	.23	
5	.31	.26	.22	.20	.30	.25	.22	.20	.24	.22	.19	
6	.28	.23	.20	.17	.27	.23	.19	.17	.22	.19	.17	
7	.26	.21	.17	.15	.25	.20	.17	.15	.20	.17	.15	
8	.24	.19	.15	.13	.23	.18	.15	.13	.18	.15	.13	
9	.22	.17	.13	.11	.21	.16	.13	.11	.16	.13	.11	
10	.20	.15	.12	.10	.20	.15	.12	.10	.15	.12	.10	

DETERMINED IN ACCORDANCE WITH CURRENT IES PUBLISHED PROCEDURES  
 LUMINAIRE INPUT WATTS = 80.4

### DISTRIBUTION

ZONE	LUMENS	% LAMP	%LUMINAIRE
0-30	985	11.14	28.27
0-40	1608	18.18	46.14
0-60	2816	31.83	80.80
0-90	3486	39.39	100.00
40-90	1877	21.22	53.86
60-90	669	7.56	19.20
90-180	0	.00	.00
0-180	3486	39.39	100.00

<b>Job Information</b>	<b>Type:</b>
------------------------	--------------

Lightolier [www.lightolier.com](http://www.lightolier.com)  
 631 Airport Road, Fall River, MA 02720 • (508) 679-8131 • Fax (508) 674-4710  
 We reserve the right to change details of design, materials and finish.  
 © 2008 Philips Group • QVS2x4PTOS.pdf

Canlyte [www.canlyte.com](http://www.canlyte.com)  
 3015 Louis-Amos, Lachine, Québec H8T 1C4 • (514) 636-0670 • (514) 636-0460