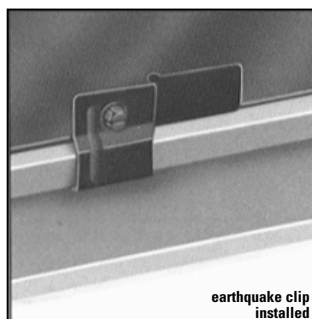
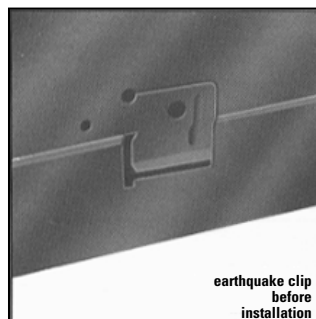
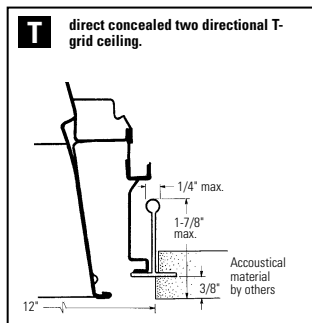
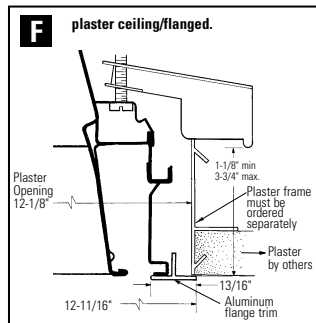
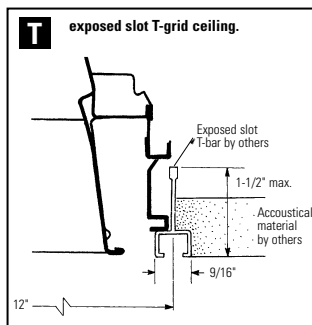
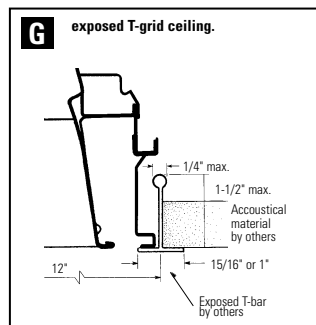


Features

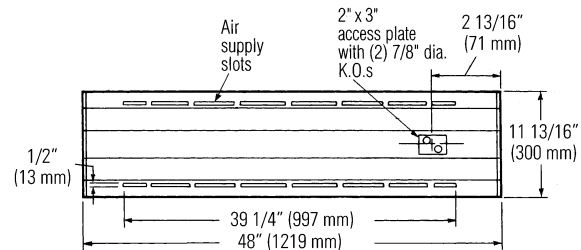
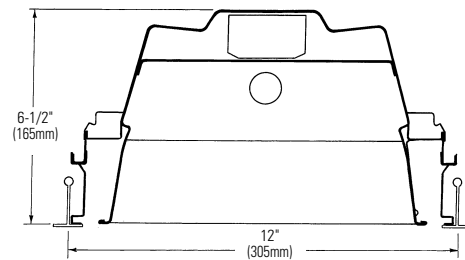
- Meets IES RP1 for lighting VDT areas with normal use.
- 67.9% efficient (T8).
- 1.9 spacing mounting ratio.
- Semi-specular low iridescence pre-anodized louver.
- Vertical grain on louver eliminates reflected lamp image on cross baffle.
- Louver frame with integral positive light stop.
- Spring loaded latches (self centering).
- Reversible louver hinging.
- Louver has protective dust guard.
- Only 6-5/8" deep body.
- Black housing exterior for cooler ballast operating temperature.
- Turned-in edges for safe handling.
- Built-in earthquake clip.
- UL-Listed twin knockout access plate.
- Air closure strips (optional).
- Construction to meet NYC Code or Chicago Plenum is available.



MOUNTING METHODS



DIMENSIONS



Job Information

Type:

Job Name:

Cat. No.:

Lamp(s):

Volts/Ballast:

Lightolier a Genlyte Thomas Company

www.lightolier.com

Technical Information: (978) 657-7600 • Fax (978) 658-0595
631 Airport Road, Fall River, MA 02720 • (508) 679-8131 • Fax (508) 674-4710

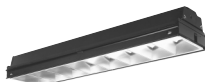
We reserve the right to change details of design, materials and finish.

© 2002 Genlyte Thomas Group LLC (Lightolier Division)

A0902

SECTION 2/Folio G05-36 REV. A

LIGHTOLIER



VR PARABOLIC VRA1G8LS132

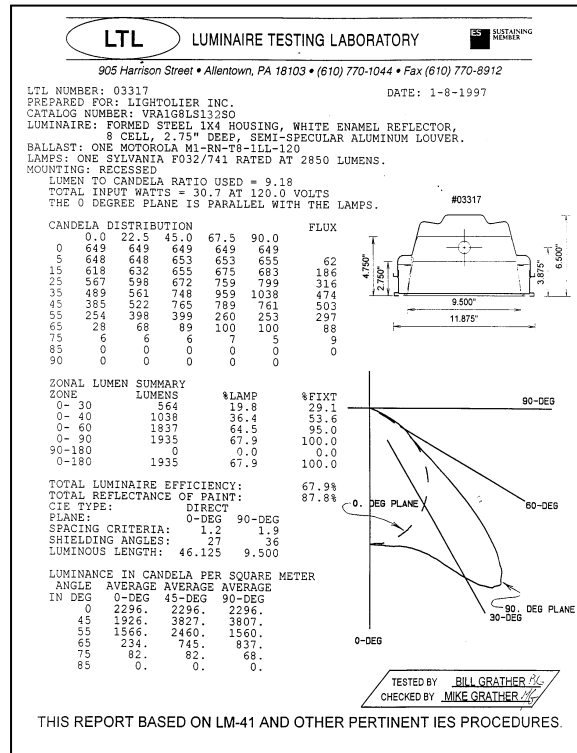
Page 2 of 2

1'x4' RECESSED FLUORESCENT, 3" DEEP, 8 CELL (1 ROW) PARABOLIC LOUVER
STATIC OR AIR SUPPLY/RETURN, IES RP1 FOR NORMAL VDT USE

PHOTOMETRY

MODEL NO. VRA1G8LS132120S0

LER = FP - 55.0 IW - 30.7 BF - 0.88
Comparative yearly lighting energy cost per 1000 lumens = \$4.36



coefficients of utilization — zonal cavity method

RF	20	20	20	20	20	20	20	20	20
RC	80	50	30	10	50	30	10	50	30
RW	70	50	30	10	50	30	10	50	30
1	76	73	71	69	67	66	67	65	64
2	71	66	63	63	60	58	61	59	57
3	66	60	55	57	53	51	55	52	50
4	61	54	49	51	47	44	50	46	44
5	56	48	43	46	42	38	45	41	38
6	51	43	38	41	37	33	40	36	33
7	47	39	33	37	32	29	36	32	29
8	43	34	29	33	28	25	32	28	25
9	39	30	25	29	24	21	29	24	21
10	36	27	22	26	22	18	26	21	18

visual comfort probability

room size	ceiling height	ceiling height	ceiling height	ceiling height	ceiling height	ceiling height	ceiling height	ceiling height	ceiling height
W	L	8.5	10.0	13.0	16.0	8.5	10.0	13.0	16.0
20	20	88	85	80	85	87	82	80	79
20	30	89	87	84	81	89	85	80	77
20	40	89	87	86	84	89	85	83	78
20	60	89	88	87	86	89	85	83	81
30	20	90	88	82	84	88	86	81	79
30	30	91	89	85	80	90	88	81	77
30	40	91	89	87	83	90	88	84	78
30	60	91	89	87	85	90	88	84	80
30	80	91	89	87	84	89	88	84	81
40	20	91	88	84	85	88	86	83	81
40	30	91	89	87	81	90	88	83	78
40	40	91	89	88	84	90	88	85	79
40	60	91	89	88	84	89	88	86	81
40	80	91	89	88	84	90	88	86	81
40	100	91	89	88	84	90	88	86	81
60	30	91	89	88	83	90	88	83	80
60	40	91	89	88	85	89	88	85	81
60	60	91	89	89	86	90	88	86	83
60	80	91	89	89	86	90	88	86	83
60	100	91	89	89	86	90	88	86	83
100	40	91	89	89	85	90	88	86	81
100	60	91	89	89	86	90	88	86	83
100	80	91	89	89	86	90	88	86	83
100	100	91	89	89	86	90	88	86	83

ORDERING INFORMATION

Explanation of Catalog Number. Example: VRA1G8LS132120S0GLR

BLANK = Standard N = NYC Code	VR 3" Deep Pre-anodized Aluminum Louver for normal VDT use	1 CEILING TYPE: G=Grid (lay-in T bar) F=Flanged (overlap) Z spline and plaster frame T=Slot grid or two-directional concealed T (see options)	8 NUMBER OF CELLS: 1 row of 8 cells	S LOUVER FINISH: L=Low Iridescence Semi-specular (standard) P=Low Iridescence specular	1 LAMP QUANTITY	VOLTAGE: 120 or 277	BALLAST TYPE: LE 1 Lamp Mag. T12 1 Lamp Elec. T8 LOL Dimming *Instant Start Standard Other dimming options, consult factory.	OPTIONS: Add appropriate suffix to catalog no, ie: (GLR)
----------------------------------	--	--	---	---	-----------------------	------------------------	--	---

OPTIONS & ACCESSORIES

ACCESS PLATE: Top Wiring access plate is shipped with fixture as standard.

When access plates are required in advance for wiring convenience, specify separately. Order Catalog Number: **ACP CSP**.

ELECTRICAL WIRING OPTIONS: Consult factory.

FUSING: Internal fast-blow fusing. SUFFIX: **GLR**.

Internal slow-blow fusing. SUFFIX: **GMF**.

RADIO INTERFERENCE FILTER: 120 or 277 volt, 50 or 60 Hz. One per fixture standard. SUFFIX: **RF**.

CONTINUOUS ROW INSTALLATION: For F type fixtures, half-width flanges are required between fixtures. Order Catalog Number: **1FCTRIM** (each joint).

SPLAY TRIM: For T ceiling type only. SUFFIX: **CTZ14 S2 SPLAY TRIM**.

AIR CLOSURE STRIP: SUFFIX **ACS4** (factory installed).

DRYWALL KIT: Order Catalog Number: **FK91X4**. Request Folio OA30-10.

CHICAGO PLENUM: SUFFIX: **CP**.

SPECIFICATIONS

PERFORMANCE: In an installation of 1 lamp 32W luminaires in a room cavity ratio of 1, reflectance 80% ceiling, 50% wall, 20% floor, the C.U. shall not be less than .73 with a spacing to mounting ratio of 1.9 perpendicular to the lamps. To meet IES RP1 recommended (basic) requirements for VDT areas the VCP (visual comfort probability) shall not be less than 90 either crosswise or lengthwise and the maximum average brightness at 65°, 75° and 85° shall not exceed 837, 82 and

SPECIFICATIONS (continued)

0 candelas per square meter respectively in the 0°, 45° and 90° horizontal planes. Candelas at Nadir (0°) not to exceed 649.

AIR HANDLING: (VRA only) side air passages for air supply or air return.

Optional side closure strips. Air return is also provided through the lamp compartment through fixture body ends.

MATERIALS: Chassis parts are die-formed embossed cold rolled steel.

Housing is embossed for rigidity with all edges turned-in for safe handling.

LOUVER: Pre-anodized aluminum (Coilzak® or equal).

FINISH: Louver—semi-specular low iridescence pre-anodized reflector sheet.

Cavity—white baked polyester minimum reflectance 86%. Phosphate under-coating. **Chassis exterior**—black baked polyester enamel.

ELECTRICAL: Thermally protected class "P" ballast C.B.M. approved, non PCB.

If K.O. is within 3" of ballast, use wire suitable for at least 90°.

LABELS: I.B.E.W./UL and C-UL.

Job Information

Type:

Lightolier a Genlyte Thomas Company

www.lightolier.com

Technical Information: (978) 657-7600 • Fax (978) 658-0595

631 Airport Road, Fall River, MA 02720 • (508) 679-8131 • Fax (508) 674-4710

We reserve the right to change details of design, materials and finish.

© 2002 Genlyte Thomas Group LLC (Lightolier Division)

A0902

SECTION 2/Folio G05-36 REV. A

LIGHTOLIER®