



BASpendant

HID

BAS General Characteristics...The housings are made of machined cast AL designed to dissipate socket heat. Lamp shrouds are spun AL that accept a variety of accessories for precision applications. Surface mounted housings are spun AL. Fixtures are assembled with no visible fasteners.

Pendant Application Concept...For use in interior space as suspended general, accent or task lighting applications that require a balance of good lamp and lamp image cut off and fixture efficiency. Can be used in office, hospitality, retail or corporate spaces that require quality lighting and an architectural statement.



aperture REQUIRED	lamp REQUIRED	fixture finish REQUIRED	suspension method REQUIRED	electrical REQUIRED	accessory options OPTIONAL	electrical options OPTIONAL	voltage REQUIRED
BAS6 6" aperture	150P38M 100P38M 70P38M 70P30M 39P30M 39P20M 150MH pendant not available in canopy mount version	GR graphite PW pewter TI titanium CO copper PC patina copper BR bronze RU iron oxide BQ baroque BK black paint WH white paint AL aluminum paint fixture finish is applied to all exterior parts for custom or RAL colors consult factory	C cord black standard -white cord sup- plied with white fixtures standard length is 120" and can be field mod- ified A aircraft cable black coiled cord, stainless cable - white cord supplied with white fix- tures standard length is 120" of pre- coiled cord and yields an effec- tive suspension length of 12" to 48" S stem stem finish to match fixture standard length is 24" — for other require- ments consult factory	R recessed C canopy canopy finish to match fixture 150MH pen- dant available in recessed only	color fil- ters, spread lenses, and louvers are available for BAS pendants see BAS acces- sories and options spec sheet	F1 fuse 120V F2 fuse 277V	1 120V HID elec- tronic ballast 2 277V HID elec- tronic ballast M 120/277V dual tap HID magnetic ballast (recessed only) consult factory for 347 volt

Omega Lighting 5 Year Limited
Warranty
U.L. and C.U.L. listed damp location.
For Wet Location and Wet Location
Covered Ceiling, consult factory.
IBEW union made.

Due to the natural aging process of Origins Rust, Patina Copper, and Baroque metalized
finishes, variations may exist between fixtures.



CAT NO.: _____

TYPE: _____

PROJECT: _____

OR1-10
8/08

OMEGA LIGHTING: 776 South Green St., Tupelo, MS 38804 Phone 662.842.7212 FAX 662.841.5501

Omega Lighting is a Philips group brand

PHILIPS

BASpendant

HID



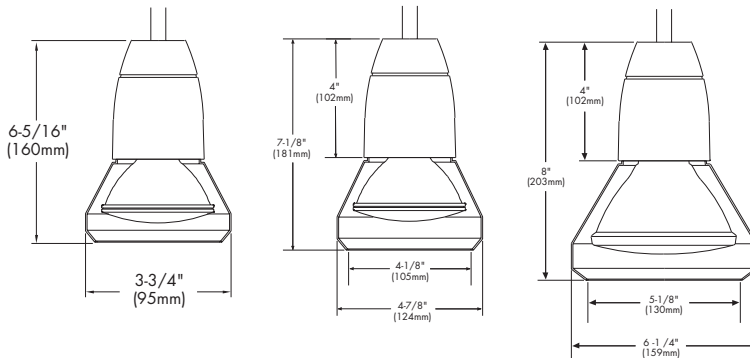
Additional photometric test files are available at www.originslighting.com

39W PAR20MH/FL 0° aiming angle			
D	FC	L	W
6'	167	3.2'	3.2'
8'	94	4.3'	4.3'
10'	60	5.4'	5.4'
12'	42	6.4'	6.4'

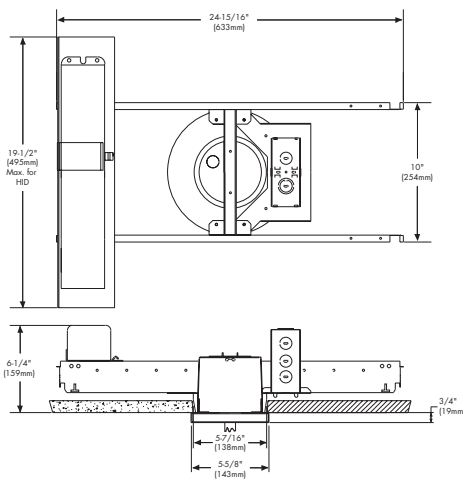
100W PAR38MH/FL 0° aiming angle			
D	FC	L	W
10'	250	4.4'	4.4'
15'	111	6.7'	6.7'
20'	63	8.9'	8.9'
25'	40	11.1'	11.1'

70W PAR30MH/FL 0° aiming angle			
D	FC	L	W
8'	281	3.5'	3.5'
12'	125	5.3'	5.3'
16'	70	7.1'	7.1'
20'	45	8.9'	8.9'

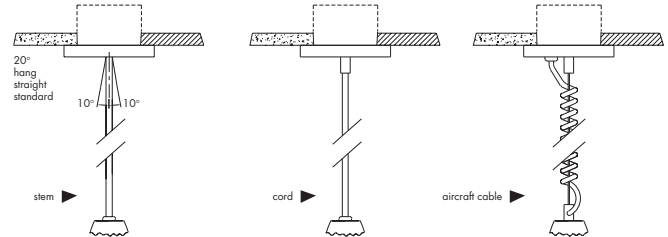
dimensions



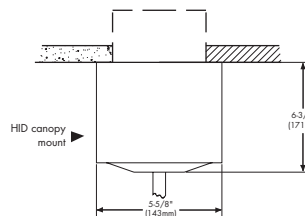
HID recessed housing dimensions



suspension methods



canopy mount dimensions



OMEGA
LIGHTING



OR1-10

776 SOUTH GREEN ST., TUPELO, MS 38804 · PHONE 662.842.7212 · FAX 662.841.5501 · WWW.OMEGALIGHTING.COM
CANADIAN DIVISION: 189 BULLOCK DRIVE, MARKHAM, ONTARIO, CANADA L3P 1W4 · PHONE 905.294.9570 · FAX 800.268.0003
WWW.ORIGINSLIGHTING.COM 8/08