



212pendant

COMPACT FLUORESCENT - ALUMINUM SHROUD

212 Application Concept...General lighting that offers a unique solution that reduces glare without compromising visual comfort. Intended for use in hospitality, corporate and retail environments that require more than the usual aesthetics and performance.

Finish

Available in graphite, black, white, aluminum, and custom RAL colors.

Material

Housing is die cast aluminum, with precision formed optic.

Mounting

Surface - Accommodates standard 3.5" or 4" octagonal junction box

UL Listed damp location. IBEW union made.



collection	lamp	finish	shroud	suspension	options	voltage options
OR212	32PLT 42PLT 57PLT	GR graphite BK black paint WH white paint AL aluminum paint fixture finish is applied to all exterior parts	ALUM aluminum construction	A1 120' aircraft cables with cord S2 17" stem with swivel canopy	CL clear lens PL pattern 73 prismatic lens	U 120-277V Advance Mark X Dimming DX1 Dimming Advance Mark X, 120V DX2 Dimming Advance Mark X, 277V

Lightolier Lighting 5 Year Limited Warranty
U.L. and C.U.L. listed damp location.

IBEW union made.

Footnotes:

1. Black cord standard, except on white painted finish.
2. Add length following option for longer stems, example :S36.

CAT NO.: _____

TYPE: _____

PROJECT: _____

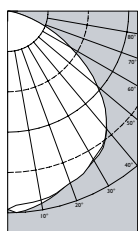
212pendant

COMPACT FLUORESCENT

photometric data

— 0° (parallel)
 - - - 90° (normal)

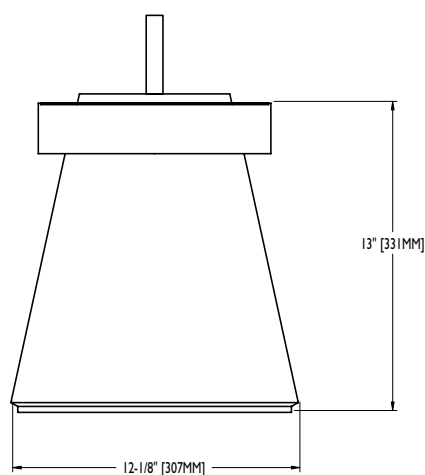
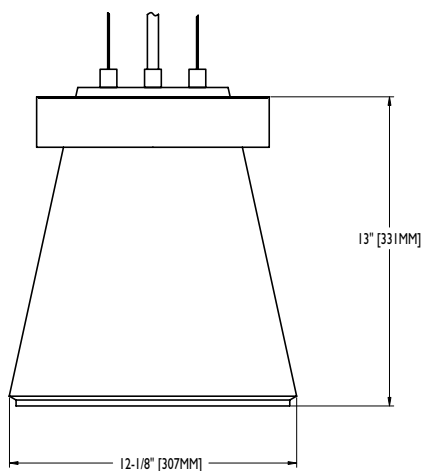
Additional photometric test files are available at www.originslighting.com



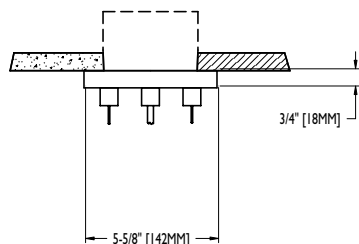
DEGREES	CANDELA		FOOT- LAMBERTS
	AT 0°	AT 90°	
90	2	3	
85	12	12	793
75	84	90	1936
65	258	272	3612
55	481	493	4891
45	702	707	5739
35	853	845	
25	911	918	
15	968	965	
5	1025	990	
0	1015	1015	

OR21257PLT-ALUM
 Report number: 28091
 Lamp: (1) CFT57W
 Fixture Efficiency: 62.3%
 S/MH Ratio (0 degree plane): 1.3
 (90 degree plane): 1.3
 Total Fixture Lumens: 2678
 IES file: 28091.IES
 Beam Angle: 108.41

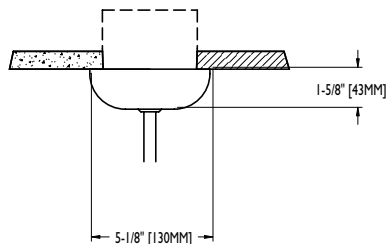
dimensions



suspension mount



canopy mount dimensions



© 2013 Koninklijke Philips N.V. (Royal Philips). All rights reserved.
 Specifications are subject to change without notice.
www.philips.com/luminaires

OR1-13 07/13 page 2 of 2

Philips Lighting Company
 200 Franklin Square Drive
 Somerset, NJ 08873
 Phone: 855-486-2216

Philips Lighting Company
 281 Hillmount Road
 Markham ON, Canada L6C 2S3
 Phone: 800-668-9008