



GERpendant

COMPACT FLUORESCENT

GER General Characteristics...The housings are made of cast and extruded AL with a machined steel top plate designed to dissipate socket and ballast heat. The reflectors are precision crafted .050 AL and are engineered for maximum light out-put and cut-off angles of 45°. The lower reflector edge is flanged for rigidity and can be covered with the optional Trim Ring. Surface mounted housings are spun AL. Fixtures are assembled with no visible fasteners.

Pendant Application Concept...For use in interior space as suspended general, accent or task lighting applications that require a balance of good lamp and lamp image cut off and fixture efficiency. Can be used in office, hospitality, retail or corporate spaces that require quality lighting and an architectural statement.



| aperture REQUIRED | lamp REQUIRED | fixture finish REQUIRED | interior reflector finish REQUIRED | exterior reflector finish OPTIONAL | suspension method REQUIRED | decorative options OPTIONAL | electrical options OPTIONAL | voltage REQUIRED |
|----------------------------|--|---|---|--|---|---|---|--|
| GER6 6" aperture | 42PLT 32PLT | GR graphite | CS clear specular | A anodized | C cord | FXB flat cross baffle FLD floating luminous disk FLR floating luminous ring T trim ring T option can be ordered in combination with FXB,FLD or FLR options (example: FXBT) | F1 fuse 120 F2 fuse 277 F3 fuse 347 DL1 Dimming Lutron Compact SE, 120V DL2 Dimming Lutron Compact SE, 277V DX1 Dimming Advance Mark X, 120V DX2 Dimming Advance Mark X, 277V EM emergency Length of cord or stem suspension is maximum of 5 feet if recessed or sur- face mount is used with emergency option For surface mount- ing, consult factory for specific needs. | U 120-277V CFL electronic ballast 3 347V CFL voltage not required with dimming option |
| GER8 8" aperture | 26PLT 18PLT 26QPL 18QPL 13QPL Socket Type CFM42W/GX24q CFM32W/GX24q CFM26W/GX24q CFM18W/GX24q CFQ26W/GX24q CFQ18W/GX24q CFQ13W/GX24q | PW pewter TI titanium CO copper PC patina copper BR bronze RU iron oxide BQ baroque BK black paint WH white paint AL aluminum paint fixture finish is applied to all exterior parts for custom or RAL colors consult factory | CSS clear semi- specular HZ haze FCS faceted clear specular FCSS faceted clear semi-specular FHZ faceted haze reflector finishes are high-per- formance anodized | anodized option leaves the exterior of reflector as an anodized finish matching the interior finish specified, creat- ing greater con- trast between fixture compo- nents | black standard - white cord sup- plied with white fixtures standard length is 120" and can be field modi- fied A aircraft cable black coiled cord, stainless cable - white cord supplied with white fix- tures standard length is 120" of pre- coiled cord and yields an effec- tive suspension length of 12" to 48" S stem stem finish to match fixture standard length is 24" — for other require- ments consult factory | | | |

Omega Lighting 5 Year Limited
Warranty
U.L. and C.U.L. listed damp location.

Due to the natural aging process of
Origins Rust, Patina Copper, and Baroque
metalized finishes, variations may exist
between fixtures.

fixture finish is
applied to all
exterior parts

for custom or
RAL colors
consult factory



CAT NO.: _____
TYPE: _____
PROJECT: _____

OR1-7

8/08

OMEGA LIGHTING: 776 South Green St., Tupelo, MS 38804 Phone 662.842.7212 FAX 662.841.5501

Omega Lighting is a Philips group brand

PHILIPS

GERpendant

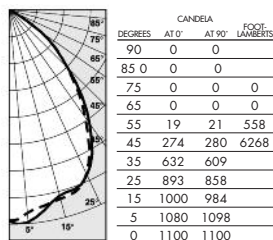
COMPACT FLUORESCENT



photometric data

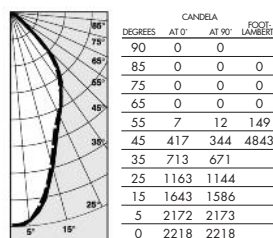
— 0° (parallel)
- - - 90° (normal)

Additional photometric test files are available at www.originslighting.com



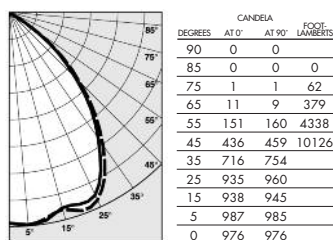
GER632PLT-CS

Clear Specular Reflector
Report Number: 22416-R
Lamp: CFT32W
Total Lumens: 2400
Fixture Efficiency: = 58.4%
IES File: F22416-R.IES
S/MH Ratio = 1.1, 1.0
Beam Angle: 75.13



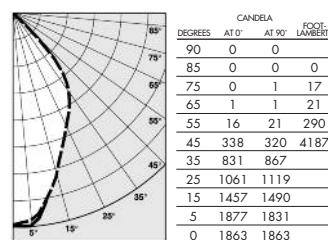
GER842PLT-CS

Clear Specular Reflector
Report Number: 20824-R
Lamp: CFT42W
Total Lumens: 3200
Fixture Efficiency: = 64.6%
IES File: F20824-R.IES
S/MH Ratio = 0.7, 0.7
Beam Angle: 54.23



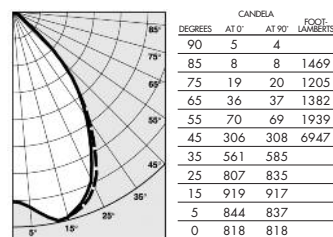
GER632PLT-FCS

Faceted Clear Specular Reflector
Report number: 23631-R
Lamp: CFT32W
Fixture Efficiency: 73.0%
S/MH: 1.2, 1.3
Total Lumens: 2400
IES file: F23631-R.IES
Beam Angle: 87.39



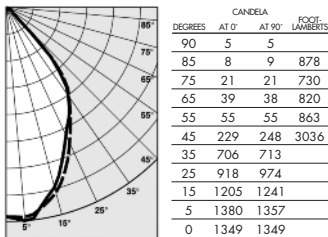
GER832PLT-FCS

Faceted Clear Specular Reflector
Report number: 23705-R
Lamp: CFT32W
Fixture Efficiency: 78.6%
S/MH Ratio: 0.8, 0.8
Total Lumens: 2400
IES file: F23705-R.IES
Beam Angle: 64.07



GER632PLT-FCS-FLR

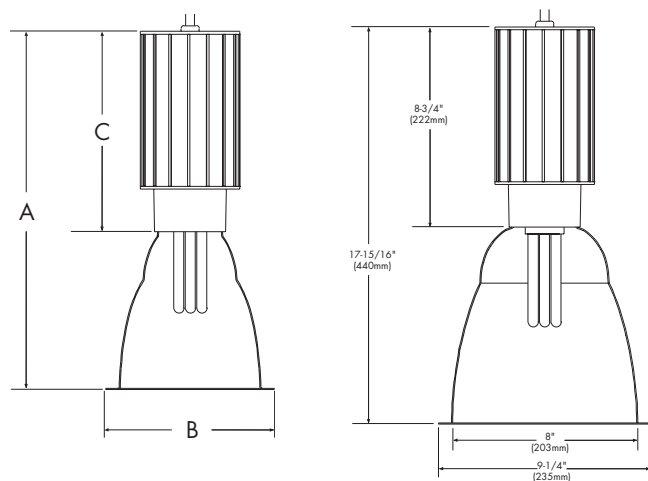
Faceted Clear Specular Reflector with Floating Luminous Ring
Report number: 23700-R
Lamp: CFT32W
Fixture Efficiency: 60.2%
S/MH Ratio: 1.2, 1.2
Total Lumens: 2400
IES file: F23700-R.IES
Beam Angle: 82.93



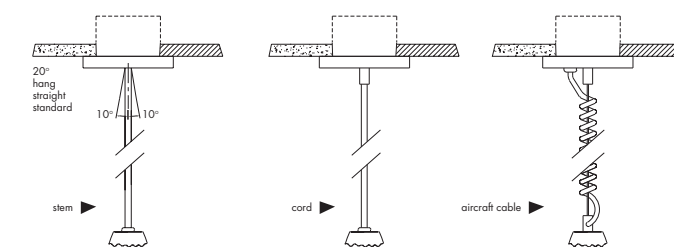
GER832PLT-FCS-FLR

Faceted Clear Specular Reflector with Floating Luminous Ring
Report number: 23704-R
Lamp: CFT32W
Fixture Efficiency: 69.8%
S/MH Ratio: 0.9, 1.0
Total Lumens: 2400
IES file: F23704-R.IES
Beam Angle: 73.55

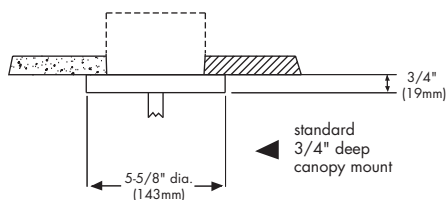
dimensions



suspension methods



suspension methods



OMEGA
LIGHTING



OR1-7

776 SOUTH GREEN ST., TUPELO, MS 38804 · PHONE 662.842.7212 · FAX 662.841.5501 · WWW.CAPRIOMEGALIGHTING.COM
CANADIAN DIVISION: 189 BULLOCK DRIVE, MARKHAM, ONTARIO, CANADA L3P 1W4 · PHONE 905.294.9570 · FAX 800.268.0003
WWW.ORIGINSLIGHTING.COM 8/08