



# HANwall

## COMPACT FLUORESCENT

**HAN General Characteristics...**The housings are made of machined cast AL designed to dissipate socket and ballast heat. The decorative struts are brushed AL. The reflectors are precision crafted .050 AL and are engineered for maximum light out-put and cut-off angles of 45°. The reflector edge is flanged for rigidity and can be covered with the optional Trim Ring. Surface mounted housings are cast AL. Fixtures are assembled with no visible fasteners.

**Wall Application Concept...**In interior spaces that require a controlled punch of light, these fixtures allow high performance yet maintain visual comfort and low glare. Fixture can be mounted either facing up or down without special modification for direct or indirect lighting applications. Wall sconces installed aimed up require a wire guard.



aperture REQUIRED	lamp REQUIRED	fixture finish REQUIRED	interior reflector finish REQUIRED	exterior reflector finish OPTIONAL	decorative options OPTIONAL	electrical options OPTIONAL	voltage REQUIRED
<b>HAN6W</b> 6" aperture	<b>42PLT</b> <b>32PLT</b>	<b>GR</b> graphite	<b>CS</b> clear specular	<b>A</b> anodized	<b>FXB</b> flat cross baffle	<b>F1</b> fuse 120	<b>U</b> 120-277V
<b>HAN8W</b> 8" aperture	<b>26PLT</b> <b>18PLT</b> <b>26QPL</b> <b>18QPL</b> <b>13QPL</b>	<b>PW</b> pewter <b>TI</b> titanium <b>CO</b> copper <b>PC</b> patina copper <b>BR</b> bronze <b>RU</b> iron oxide <b>BQ</b> baroque <b>BK</b> black paint <b>WH</b> white paint <b>AL</b> aluminum paint	<b>CSS</b> clear semi-specular <b>HZ</b> haze <b>FCS</b> faceted clear specular <b>FCSS</b> faceted clear semi-specular <b>FHZ</b> faceted haze	anodized option leaves the exterior of reflector as an anodized finish matching the interior finish specified, creating greater contrast between fixture components	<b>FLD</b> floating luminous disk <b>FLR</b> floating luminous ring <b>T</b> trim ring T option can be ordered in combination with FXB, FLD or FLR options example: FXBT)	<b>F2</b> fuse 277 <b>F3</b> fuse 347 <b>DL1</b> Dimming Lutron Compact SE, 120V <b>DL2</b> Dimming Lutron Compact SE, 277V <b>DX1</b> Dimming Advance Mark X, 120V <b>DX2</b> Dimming Advance Mark X, 277V <b>EM</b> emergency	CFL electronic ballast <b>3</b> 347V CFL voltage not required with dimming option

### mesh wire guard

The mesh wire guard is required for use in all HAN wall sconces when installed aimed up. The guard minimizes the possibility that debris will fall into the fixture and block the lamp or cause an unsafe condition.

Order as a separate line item:  
WG8 - 8" mesh wire guard  
WG6 - 6" mesh wire guard

Omega Lighting 5 Year Limited Warranty  
U.L. and C.U.L. listed damp location.  
For Wet Location and Wet Location Covered Ceiling, consult factory.  
IBEW union made.  
Due to the natural aging process of Origins Rust, Patina Copper, and Baroque metalized finishes, variations may exist between fixtures.

Length of cord or stem suspension is maximum of 5 feet if recessed or surface mount is used with emergency option  
For surface mounting, consult factory for specific needs.



CAT NO.: \_\_\_\_\_  
TYPE: \_\_\_\_\_  
PROJECT: \_\_\_\_\_

OR2-4

8/08

OMEGA LIGHTING: 776 South Green St., Tupelo, MS 38804 Phone 662.842.7212 FAX 662.841.5501

Omega Lighting is a Philips group brand

PHILIPS

# HANwall

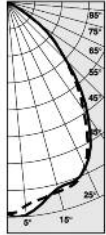
COMPACT FLUORESCENT



## photometric data

— 0° (parallel)  
 --- 90° (normal)

Additional photometric test files are available at [www.originslighting.com](http://www.originslighting.com)



CANDELA			
DEGREES	AT 0°	AT 90°	FOOT-LAMBERTS
90	0	0	
85	0	0	
75	0	0	
65	0	0	
55	19	21	558
45	274	280	6268
35	632	609	
25	893	858	
15	1000	984	
5	1080	1098	
0	1100	1100	

### HAN632PLT-CS

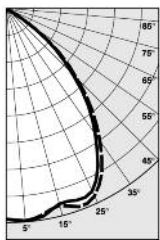
Clear Specular Reflector  
 Report Number: 22416-R  
 Lamp: CFT32W  
 Total Lumens: 2400  
 Fixture Efficiency: = 58.4%  
 IES File: F22416-R.IES  
 S/MH Ratio = 1.1, 1.0  
 Beam Angle: 75.13



CANDELA			
DEGREES	AT 0°	AT 90°	FOOT-LAMBERTS
90	0	0	
85	0	0	
75	0	0	
65	0	0	
55	7	12	149
45	417	344	4843
35	713	671	
25	1163	1144	
15	1643	1586	
5	2172	2173	
0	2218	2218	

### HAN842PLT-CS

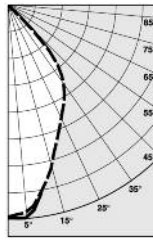
Clear Specular Reflector  
 Report Number: 20824-R  
 Lamp: CFT42W  
 Total Lumens: 3200  
 Fixture Efficiency: = 64.6%  
 IES File: F20824-R.IES  
 S/MH Ratio = 0.7, 0.7  
 Beam Angle: 54.23



CANDELA			
DEGREES	AT 0°	AT 90°	FOOT-LAMBERTS
90	0	0	
85	0	0	
75	1	1	62
65	11	9	379
55	151	160	4338
45	436	459	10126
35	716	754	
25	935	960	
15	938	945	
5	987	985	
0	976	976	

### HAN632PLT-FCs

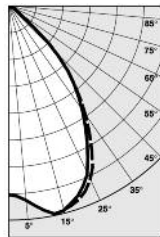
Faceted Clear Specular Reflector  
 Report number: 23631-R  
 Lamp: CFT32W  
 Fixture Efficiency: 73.0%  
 S/MH: 1.2, 1.3  
 Total Lumens: 2400  
 IES file: F23631-R.IES  
 Beam Angle: 87.39



CANDELA			
DEGREES	AT 0°	AT 90°	FOOT-LAMBERTS
90	0	0	
85	0	0	
75	0	1	17
65	1	1	21
55	16	21	290
45	338	320	4187
35	831	867	
25	1061	1119	
15	1457	1490	
5	1877	1831	
0	1863	1863	

### HAN832PLT-FCs

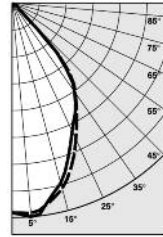
Faceted Clear Specular Reflector  
 Report number: 23705-R  
 Lamp: CFT32W  
 Fixture Efficiency: 78.6%  
 S/MH Ratio: 0.8, 0.8  
 Total Lumens: 2400  
 IES file: F23705-R.IES  
 Beam Angle: 64.07



CANDELA			
DEGREES	AT 0°	AT 90°	FOOT-LAMBERTS
90	5	4	
85	8	8	1469
75	19	20	1205
65	36	37	1382
55	70	69	1939
45	306	308	6947
35	561	585	
25	807	835	
15	919	917	
5	844	837	
0	818	818	

### HAN632PLT-FCs-FLR

Faceted Clear Specular Reflector with Floating Luminous Ring  
 Report number: 23700-R  
 Lamp: CFT32W  
 Fixture Efficiency: 60.2%  
 S/MH Ratio: 1.2, 1.2  
 Total Lumens: 2400  
 IES file: F23700-R.IES  
 Beam Angle: 82.93

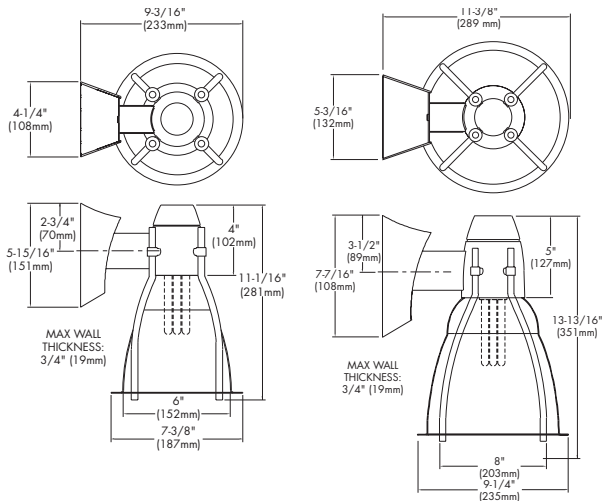


CANDELA			
DEGREES	AT 0°	AT 90°	FOOT-LAMBERTS
90	5	5	
85	8	9	878
75	21	21	730
65	39	38	820
55	55	55	863
45	229	248	3036
35	706	713	
25	918	974	
15	1205	1241	
5	1380	1357	
0	1349	1349	

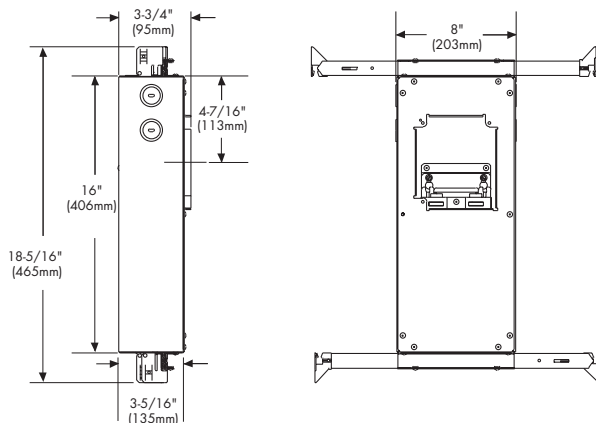
### HAN832PLT-FCs-FLR

Faceted Clear Specular Reflector with Floating Luminous Ring  
 Report number: 23704-R  
 Lamp: CFT32W  
 Fixture Efficiency: 69.8%  
 S/MH Ratio: 0.9, 1.0  
 Total Lumens: 2400  
 IES file: F23704-R.IES  
 Beam Angle: 73.55

## dimensions



## recessed wall pack (required for dimming and emergency options)



OMEGA  
LIGHTING



OR2-4

776 SOUTH GREEN ST., TUPELO, MS 38804 · PHONE 662.842.7212 · FAX 662.841.5501 · [WWW.OMEGALIGHTING.COM](http://WWW.OMEGALIGHTING.COM)  
 CANADIAN DIVISION: 189 BULLOCK DRIVE, MARKHAM, ONTARIO, CANADA L3P 1W4 · PHONE 905.294.9570 · FAX 800.268.0003  
[WWW.ORIGINSLIGHTING.COM](http://WWW.ORIGINSLIGHTING.COM) 8/08