



# BASwall

HID



**BAS General Characteristics...**The housings are made of machined cast AL designed to dissipate socket heat. Lamp shrouds are spun AL that accept a variety of accessories for precision applications. Surface mounted housings are spun AL. Fixtures are assembled with no visible fasteners.

**Pendant Application Concept...**For use in interior space as suspended general, accent or task lighting applications that require a balance of good lamp and lamp image cut off and fixture efficiency. Can be used in office, hospitality, retail or corporate spaces that require quality lighting and an architectural statement.

aperture REQUIRED	lamp REQUIRED	fixture finish REQUIRED	electrical options OPTIONAL	voltage REQUIRED	accessory options OPTIONAL
<b>BASW</b>	<b>150P38M</b> <b>100P38M</b> <b>70P38M</b> <b>70P30M</b> <b>39P30M</b> <b>39P20M</b>	<b>GR</b> graphite <b>PW</b> pewter <b>TI</b> titanium <b>CO</b> copper <b>PC</b> patina copper <b>BR</b> bronze <b>RU</b> iron oxide <b>BQ</b> baroque <b>BK</b> black paint <b>WH</b> white paint <b>AL</b> aluminum paint fixture finish is applied to all exterior parts for custom or RAL colors consult factory	<b>F1</b> fuse 120 <b>F2</b> fuse 277	<b>1</b> 120V HID electronic ballast <b>2</b> 277V HID electronic ballast all HID wall fixtures require recessed wall pack	color filters, spread lenses, and louvers are available for BAS wall sconces see accessories and options spec sheet

## mesh wire guard

The mesh wire guard is required for use in all BAS wall sconces when installed aimed up. The guard minimizes the possibility that debris will fall into the fixture and block the lamp or cause an unsafe condition.

Order as a separate line item:

P20WG - BAS par20 mesh wire guard  
P30WG - BAS par 30 mesh wire guard  
P38WG - BAS par 38 mesh wire guard

Omega Lighting 5 Year Limited Warranty  
U.L. and C.U.L. listed damp location.  
For Wet Location and Wet Location Covered Ceiling, consult factory.  
IBEW union made.

Due to the natural aging process of Origins Rust, Patina Copper, and Baroque metalized finishes, variations may exist between fixtures.



CAT NO.: \_\_\_\_\_  
TYPE: \_\_\_\_\_  
PROJECT: \_\_\_\_\_

OR2-7  
8/08

OMEGA LIGHTING: 776 South Green St., Tupelo, MS 38804 Phone 662.842.7212 FAX 662.841.5501

Omega Lighting is a Philips group brand

**PHILIPS**

# BASwall

HID



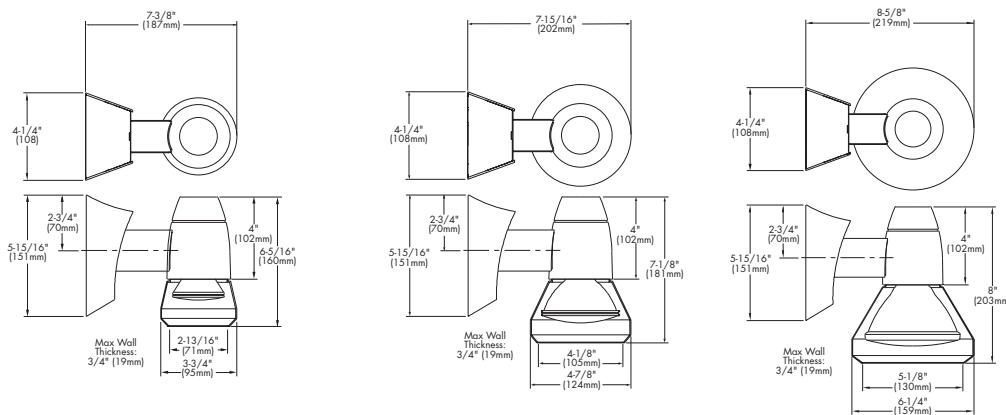
Additional photometric test files are available at [www.originslighting.com](http://www.originslighting.com)

39W PAR20MH/FL 0° aiming angle			
D	FC	L	W
6'	167	3.2'	3.2'
8'	94	4.3'	4.3'
10'	60	5.4'	5.4'
12'	42	6.4'	6.4'

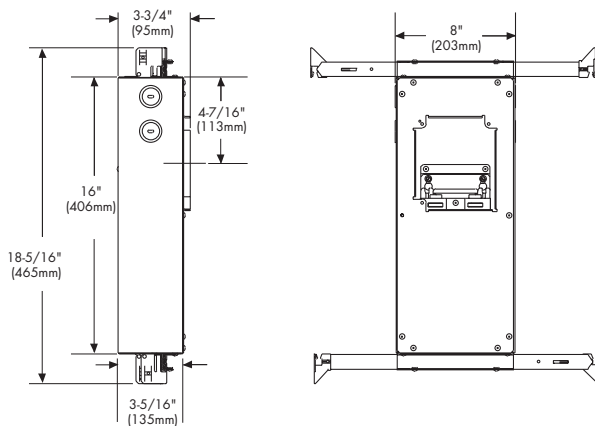
70W PAR30MH/FL 0° aiming angle			
D	FC	L	W
8'	281	3.5'	3.5'
12'	125	5.3'	5.3'
16'	70	7.1'	7.1'
20'	45	8.9'	8.9'

100W PAR38MH/FL 0° aiming angle			
D	FC	L	W
10'	250	4.4'	4.4'
15'	111	6.7'	6.7'
20'	63	8.9'	8.9'
25'	40	11.1'	11.1'

## dimensions



## recessed wall pack



OMEGA  
LIGHTING



OR2-7

776 SOUTH GREEN ST., TUPELO, MS 38804 · PHONE 662.842.7212 · FAX 662.841.5501 · [WWW.OMEGALIGHTING.COM](http://WWW.OMEGALIGHTING.COM)  
CANADIAN DIVISION: 189 BULLOCK DRIVE, MARKHAM, ONTARIO, CANADA L3P 1W4 · PHONE 905.294.9570 · FAX 800.268.0003  
[WWW.ORIGINSLIGHTING.COM](http://WWW.ORIGINSLIGHTING.COM) 8/08