

Decorative Pendant

212 LED 1500
1400-1750 Lumen
Decorative Pendant



Specifier's Reference

Project

Type

Model No.

Comments

application

- Philips Omega Origins 212 LED pendant creates general lighting that offers a unique solution to reduce glare without compromising visual comfort. Intended for use in hospitality, corporate and retail environments that require more than the usual aesthetics and performance.

light engine

- Philips Omega mixing chamber/optical assembly: Remote phosphor technology provides increased efficiency and color stability by redirecting back reflected light. Phosphor lens assembly converts high brightness royal blue light into white light for an even, diffused pattern, eliminating bright spots often created by individual LEDs. This technology provides consistent, stable color with CCT color control of +/- 100K over the life of the light engine and provides 20% higher efficiency.
- LED Array: The LED Array consists of a metal core circuit board with 22 high brightness royal blue LEDs.
- Color: Available in three CCT options, 3000K, 3500K or 4000K with 80CRI +/-2%.
- Electrical: The power supply/driver features Advance Intelli-volt 120-277VAC 50/60hz, with 0-10V analog dimming capability. The power supply is overload and short circuit protected as well as thermally regulated to prevent overheating. Sound rating A. Refer to dimming compatibility spec sheet for complete details. Driver has rated lifetime of 50,000 hours.
- Lifetime/Lumen Maintenance: 50,000 hour lifetime at 70% lumen maintenance light engine.

construction

- Thermal Management: A proprietary die-cast aluminum heat sink is designed to properly maintain junction temperatures in recessed Non-IC applications to provide reliable performance over the life of the light engine.
- Finish: Five metalized finishes and three paint finishes available.
- Housing: Housing is constructed of die cast aluminum, with a precision formed optic.
- Mounting: Two mounting methods available to suit any application. Aircraft cable mounting comes standard with 120 inches of aircraft cables and cord. Pendant mounting comes standard with a 17 inch stem and swivel canopy.

listings & warranty

- ETL, cUL Listed. (Suitable for wet location applications.)
- Photometric testing performed using IESNA - LM79 procedures. LED lifetime testing performed using IESNA - LM80 procedures.
- 5 year Warranty

Green Choice: OM212LED27GRALUMA35KU

OR212LED	27					
Family OR212LED Origins 212 LED	Wattage 27 – 27 Input Watts	Finish ³ GR – Graphite PW – Pewter TI – Titanium CO – Copper BR – Bronze BK – Black paint WH – White paint AL – Aluminum paint	Shroud ALUM – Aluminum construction	Mounting A – 120" Aircraft cables with cord ¹ S – 17" stem with swivel canopy ²	CCT 30K – 3000K 35K – 3500K 40K – 4000K	Voltage U – 120-277 volt

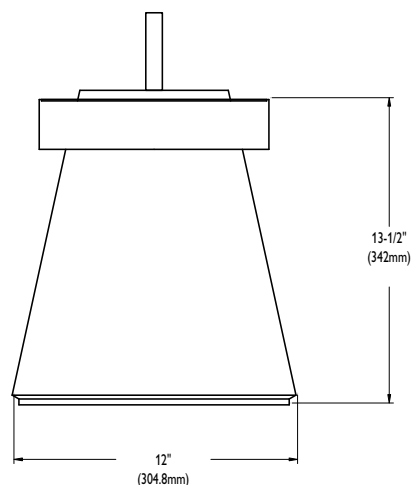
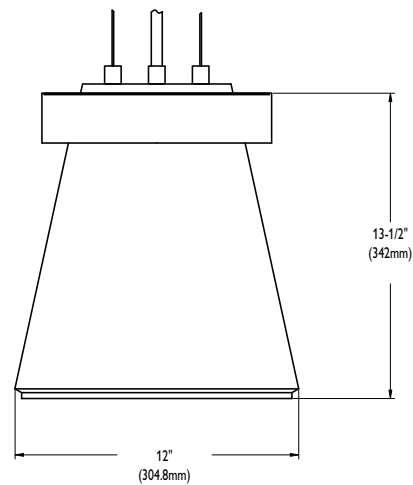
Footnotes

- Black cord standard, except on white painted finish.
- Add length following option for longer stems, example: S36
- Fixture finish is applied to all exterior parts.

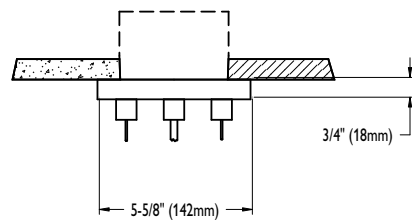
energy data

Input Voltage	Input Current	Drive Current	Input Power	LED Power	THD %	Power Factor
120	0.25	350mA	27	23.1	<10%	>0.9
277	0.11	350mA	27	23.1	<10%	>0.9

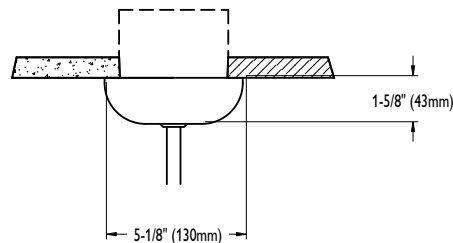
dimensions



suspension mount



canopy mount



finishes

Five different metalized finishes and three textured paint finishes are available for the hardware on the Omega Origins 212 collection. The same subtle irregularities that one would find in a natural stone are what make Origins finishes look and feel real. Real metal is mechanically bonded to the surface of the hardware, reproducing a unique, natural look.



copper



bronze



graphite



titanium



pewter



black paint



aluminum



white paint

photometrics

OR212LED27ALUM30K

Tested to LM-79 standards.

Clear Specular Reflector		Candle Power				Average Luminance (Cd/sq. meter)			
Test No.	29247P	Degrees	At 0°	At 45°	At 90°	Zone	End	45	Cross
S/MH	(0 degree plane) 1.1	0	840	840	840	45	3781	3646	3607
Lamp Type	(1) 22 Royal Blue LEDs	5	836	836	836	55	2877	2687	2663
Fixture Lumens	1122	15	807	807	807	65	1969	1807	1807
IES File	29247P	25	744	741	739	75	1054	949	896
Input Watts	27	35	407	397	399	85	469	313	469
Driver	ADVANCE LED-INTA-0520C-80-DB	45	135	131	129	Coefficients of Utilization			
Luminaire Efficacy	42 LPW	55	84	78	77	pcc	80	70	50
Comp Yearly Energy Cost at \$0.08/KWh = \$5.71		65	42	39	39	pw	50	30	50
		75	14	12	12	RCR			
		85	2	1	2	0	118	118	118
						1	112	109	106
						2	105	100	94
						3	98	91	84
						4	93	83	77
						5	86	78	70
						6	81	71	65
						7	77	67	59
						8	72	61	55
						9	68	57	52
						10	65	55	47

OM212LED27ALUM35K

Tested to LM-79 standards.

Clear Specular Reflector		Candle Power				Average Luminance (Cd/sq. meter)			
Test No.	29248P	Degrees	At 0°	At 45°	At 90°	Zone	End	45	Cross
S/MH	(0 degree plane) 1.1	0	894	894	894	45	4253	4620	4542
Lamp Type	(1) 22 Royal Blue LEDs	5	889	891	893	55	3169	2931	2979
Total Fixture Lumens	1223	15	862	864	866	65	2135	2005	2038
IES File	29248P	25	799	762	767	75	1267	1320	1320
Input Watts	27	35	440	436	434	85	314	314	157
Driver	ADVANCE LED-INTA-0520C-80-DB	45	152	166	163	Coefficients of Utilization			
Luminaire Efficacy	45 LPW	55	92	85	87	pcc	80	70	50
Comp Yearly Energy Cost at \$0.08/KWh = \$5.33		65	46	43	44	pw	50	30	50
		75	17	17	17	RCR			
		85	1	1	1	0	118	118	118
						1	112	109	106
						2	105	98	94
						3	98	91	84
						4	93	83	77
						5	86	77	69
						6	81	70	64
						7	77	66	58
						8	72	61	55
						9	68	57	51
						10	65	54	46

OM212LED27ALUM40K

Tested to LM-79 standards.

Clear Specular Reflector		Candle Power				Average Luminance (Cd/sq. meter)			
Test No.	29249P	Degrees	At 0°	At 45°	At 90°	Zone	End	45	Cross
S/MH	(0 degree plane) 1.2	0	981	981	981	45	4250	4308	4404
Lamp Type	(1) 22 Royal Blue LEDs	5	976	976	977	55	3143	3167	3262
Total Fixture Lumens	1317	15	941	944	945	65	2101	2133	2198
IES File	29249P	25	866	866	872	75	1108	1161	1214
Input Watts	27	35	469	462	466	85	470	470	470
Driver	ADVANCE LED-INTA-0520C-80-DB	45	152	154	158	Coefficients of Utilization			
Luminaire Efficacy	49 LPW	55	91	92	95	pcc	80	70	50
Comp Yearly Energy Cost at \$0.08/KWh = \$4.90		65	45	46	47	pw	50	30	50
		75	15	15	16	RCR			
		85	2	2	2	0	118	118	118
						1	112	109	106
						2	105	100	94
						3	98	91	84
						4	93	83	77
						5	86	78	70
						6	81	71	65
						7	77	67	59
						8	72	61	55
						9	68	57	52
						10	65	55	47



©2011 Philips Omega
All rights reserved.

776 South Green Street • Tupelo, MS 38804
p. 800.234.1890 • f. 662.841.5501
www.omegalighting.com
Canadian Division
189 Bullock Drive • Markham, Ontario L3P 1W4
p. 905.294.9570 • f. 905.294.9811

Contact Factory for Additional Configurations.

Specifications are subject to change without notice.

Some luminaires use fluorescent or high intensity discharge (HID) lamps that contain small amounts of mercury. Such lamps are labeled, "Contain Mercury" and/or the symbol "HG". Lamps that contain mercury must be disposed of in accordance with local requirements. Information regarding lamp recycling and disposal can be found at www.lamprecycle.org

