

## Decorative Pendant

**212 LED 2000**  
1900-2450 Lumen  
Decorative Pendant



### Specifier's Reference

Project

Type

Model No.

Comments

### application

- Philips Lightolier 212 LED pendant creates general lighting that offers a unique solution to reduce glare without compromising visual comfort. Intended for use in hospitality, corporate and retail environments that require more than the usual aesthetics and performance.

### light engine

- Mixing chamber/optical assembly: Remote phosphor technology provides increased efficiency and color stability by redirecting back reflected light. Phosphor lens assembly converts high brightness royal blue light into white light for an even, diffused pattern, eliminating bright spots often created by individual LEDs. This technology provides consistent, stable color with CCT color control of +/- 100K over the life of the light engine and provides 20% higher efficiency.
- LED Array: The LED Array consists of a metal core circuit board with 22 high brightness royal blue LEDs.
- Color: Available in three CCT options, 3000K, 3500K or 4000K with 80CRI +/-2%.
- Electrical: The power supply/driver features Advance Intelli-volt 120-277VAC 50/60hz, with 0-10V analog dimming capability. The power supply is overload and short circuit protected as well as thermally regulated to prevent overheating. Sound rating A. Refer to dimming compatibility spec sheet for complete details. Driver has rated lifetime of 50,000 hours.
- Lifetime/Lumen Maintenance: 50,000 hour lifetime at 70% lumen maintenance light engine.

### construction

- Thermal Management: A proprietary die-cast aluminum heat sink is designed to properly maintain junction temperatures in recessed Non-IC applications to provide reliable performance over the life of the light engine.
- Finish: Available in graphite, black, white, aluminum, and custom RAL colors.
- Housing: Housing is constructed of die cast aluminum, with a precision formed optic.
- Mounting: Two mounting methods available to suit any application. Aircraft cable mounting comes standard with 120 inches of aircraft cables and cord. Pendant mounting comes standard with a 17 inch stem and swivel canopy.

### listings & warranty

- ETL, cUL Listed. (Suitable for wet location applications.)
- Photometric testing performed using IESNA - LM79 procedures. LED lifetime testing performed using IESNA - LM80 procedures.
- 5 year Warranty

## Green Choice: OM212LED39GRALUMA35KU

<b>OR212LED</b>	<b>39</b>					
<b>Family</b> OR212LED		<b>Finish</b> <sup>3</sup> GR – Graphite BK – Black paint WH – White paint AL – Aluminum paint		<b>Mounting</b> A – 120' Aircraft cables with cord <sup>1</sup> S – 17" stem with swivel canopy <sup>2</sup>		<b>Voltage</b> U – 120-277 volt
	<b>Wattage</b> 39 – 39 Input Watts		<b>Shroud</b> ALUM – Aluminum construction		<b>CCT</b> 30K – 3000K 35K – 3500K 40K – 4000K	

### Footnotes

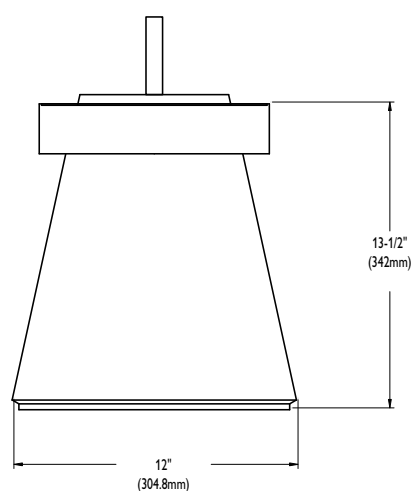
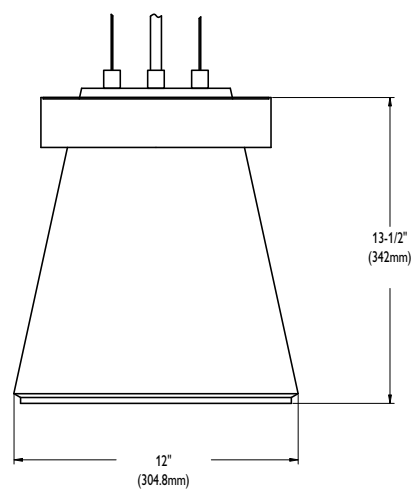
- Black cord standard, except on white painted finish.
- Add length following option for longer stems, example: S36
- Fixture finish is applied to all exterior parts.



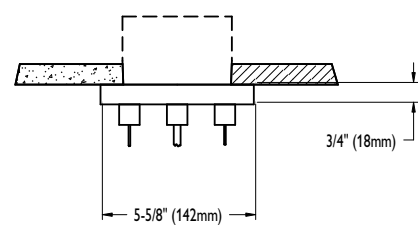
energy data

Input Voltage	Input Current	Drive Current	Input Power	LED Power	THD %	Power Factor
120	0.25	350mA	39	23.1	<10%	>0.9
277	0.11	350mA	39	23.1	<10%	>0.9

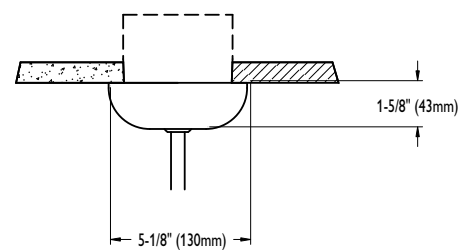
dimensions



suspension mount

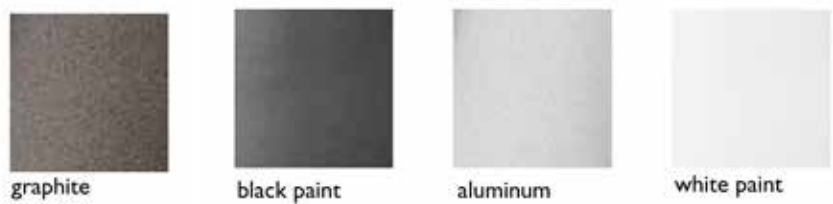


canopy mount



finishes

Four different paint finishes are available for the hardware on the 212 collection. Real metal is mechanically bonded to the surface of the hardware, reproducing a unique, natural look.



## photometrics

## OR212LED39ALUM30K

Tested to LM-79 standards.

<b>Clear Specular Reflector</b>		<b>Candle Power</b>				<b>Average Luminance (Cd/sq. meter)</b>			
<b>Test No.</b>	29247	<b>Degrees</b>	<b>At 0°</b>	<b>At 45°</b>	<b>At 90°</b>	<b>Zone</b>	<b>End</b>	<b>45</b>	<b>Cross</b>
<b>SIMH</b>	(0 degree plane) 1.1	0	1215	1215	1215	45	5470	5275	5219
<b>Lamp Type</b>	(1) 22 Royal Blue LEDs	5	1209	1210	1210	55	4163	3888	3854
<b>Fixture Lumens</b>	1624	15	1167	1167	1168	65	2849	2615	2615
<b>IES File</b>	F29247	25	1077	1072	1069	75	1525	1373	1296
<b>Input Watts</b>	39	35	589	574	577	85	679	453	679
<b>Driver</b>	ADVANCE LED-INTA-0520C-80-DB	45	196	189	187	<b>Coefficients of Utilization</b>			
<b>Luminaire Efficacy</b>	42 LPW	55	121	113	112	pcc	80		70
<b>Comp Yearly Energy Cost at</b> <b>\$0.08/KWh = \$5.71</b>		65	61	56	56	pw	50	30	50
		75	20	18	17	RCR	50	30	50
		85	3	2	3	0	118	118	118
						1	112	109	106
						2	105	100	94
						3	98	91	84
						4	93	83	77
						5	86	78	70
						6	81	71	65
						7	77	67	59
						8	72	61	55
						9	68	57	52
						10	65	55	47

## OM212LED39ALUM35K

Tested to LM-79 standards.

<b>Clear Specular Reflector</b>		<b>Candle Power</b>				<b>Average Luminance (Cd/sq. meter)</b>			
<b>Test No.</b>	29248	<b>Degrees</b>	<b>At 0°</b>	<b>At 45°</b>	<b>At 90°</b>	<b>Zone</b>	<b>End</b>	<b>45</b>	<b>Cross</b>
<b>SIMH</b>	(0 degree plane) 1.2	0	1291	1291	1291	45	6140	6670	6559
<b>Lamp Type</b>	(1) 22 Royal Blue LEDs	5	1284	1286	1289	55	4576	4232	4301
<b>Total Fixture Lumens</b>	1765	15	1245	1247	1251	65	3082	2895	2942
<b>IES File</b>	F29248	25	1154	1101	1108	75	1830	1906	1906
<b>Input Watts</b>	39	35	636	630	626	85	453	453	226
<b>Driver</b>	ADVANCE LED-INTA-0520C-80-DB	45	220	239	235	<b>Coefficients of Utilization</b>			
<b>Luminaire Efficacy</b>	45 LPW	55	133	123	125	pcc	80		70
<b>Comp Yearly Energy Cost at</b> <b>\$0.08/KWh = \$5.33</b>		65	66	62	63	pw	50	30	50
		75	24	25	25	RCR	50	30	50
		85	2	2	1	0	118	118	118
						1	112	109	106
						2	105	98	94
						3	98	91	84
						4	93	83	77
						5	86	77	69
						6	81	70	64
						7	77	66	58
						8	72	61	55
						9	68	57	51
						10	65	54	46

## OM212LED39ALUM40K

Tested to LM-79 standards.

<b>Clear Specular Reflector</b>		<b>Candle Power</b>				<b>Average Luminance (Cd/sq. meter)</b>			
<b>Test No.</b>	29249	<b>Degrees</b>	<b>At 0°</b>	<b>At 45°</b>	<b>At 90°</b>	<b>Zone</b>	<b>End</b>	<b>45</b>	<b>Cross</b>
<b>SIMH</b>	(0 degree plane) 1.1	0	1417	1417	1417	45	6140	6224	6363
<b>Lamp Type</b>	(1) 22 Royal Blue LEDs	5	1410	1411	1412	55	4542	4576	4714
<b>Total Fixture Lumens</b>	1902	15	1360	1364	1366	65	3035	3082	3175
<b>IES File</b>	F29249	25	1251	1252	1260	75	1601	1678	1754
<b>Input Watts</b>	39	35	677	667	674	85	679	679	679
<b>Driver</b>	ADVANCE LED-INTA-0520C-80-DB	45	220	223	228	<b>Coefficients of Utilization</b>			
<b>Luminaire Efficacy</b>	49 LPW	55	132	133	137	pcc	80		70
<b>Comp Yearly Energy Cost at</b> <b>\$0.08/KWh = \$4.90</b>		65	65	66	68	pw	50	30	50
		75	21	22	23	RCR	50	30	50
		85	3	3	3	0	118	118	118
						1	112	109	106
						2	105	100	94
						3	98	91	84
						4	93	83	77
						5	86	78	70
						6	81	71	65
						7	77	67	59
						8	72	61	55
						9	68	57	52
						10	65	55	47

