

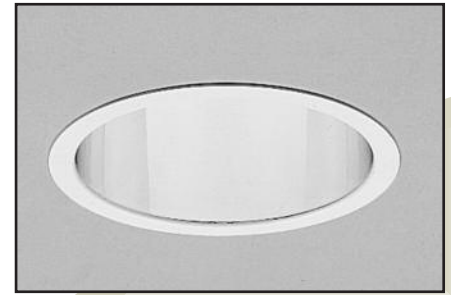
OM4100A19

4" A-Lamp Reflector Downlights

CAT. NO:

TYPE:

PROJECT:



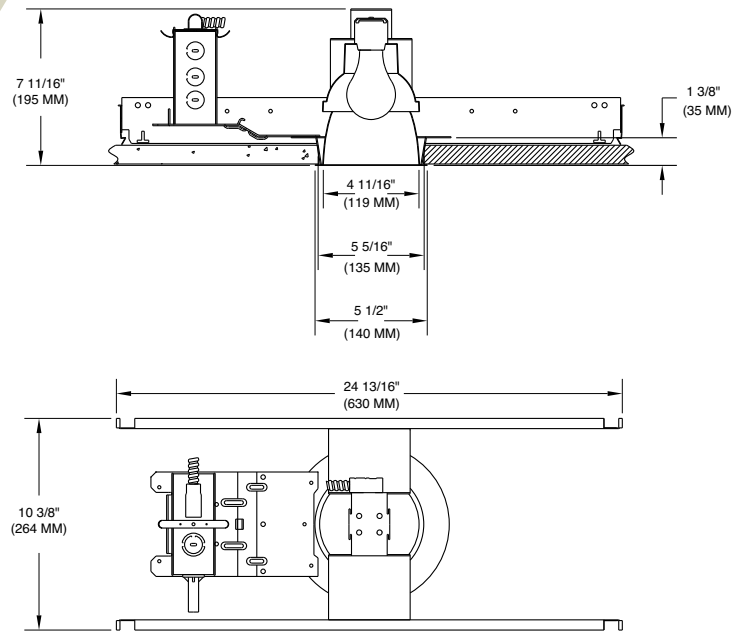
PRODUCT INFORMATION

Applications

A small aperture low brightness open reflector downlight for use with economical A type incandescent lamps. Provides broad, uniform light distribution with high efficiency for areas such as lobbies, reception areas, restaurants, residences and offices.

Specifications

- Mounting pan** - Precision die-stamped 16 gauge galvanized steel mounting pan and yoke assembly. Accommodates ceiling materials up to 1-3/8" thick.
- Installation** - Mounting pan has pre-installed C-channel with vertical and horizontal adjustments. Junction box and mounting brackets are accessible from below ceiling.
- Reflectors** - Precision spun .051 aluminum two piece reflector, self flanged with clear specular Alzak® finish. Reflector is screw mounted for positive attachment to socket assembly. Standard flat flange is painted white. Optional polished flange matching reflector finish available, add FF to catalog number.
- Socket** - Medium base 250V porcelain socket with nickel-plated copper screw shell and 200°C wire positions lamp at optical focal plane of reflector for maximum performance.
- Junction box** - Extra large 43.75-cubic inch 16 gauge galvanized steel with snap-on covers. Approved for through wiring with up to 8 #12 AWG conductors.
- Thermal protection** - A thermal protection device which meets all U.L. and NEC requirements is standard.
- U.L. Listed** - For use in damp locations and approved for Through Branch Circuit Wiring. I.B.E.W. union made.



♣ Canadian Specifications may vary from these shown, consult Canadian Division.

CATALOG SYSTEM AND OPTIONS

EXAMPLE OF COMPLETE CATALOG NUMBER: **OM4100A19-CS**

OMEGA Apr.	Lamp (by others)	Reflector Finish*	Frame Options**	Accessory
OM4	100 A19	-	-	-
		CS Clear Specular	FB Flat Bar Hangers	SA4 Sloped Ceiling Adapter ¹
		CSS Clear Semi-Specular		
		HZ Haze		
		GS Champagne Gold Specular		
		WT Wheat		
		PW Pewter		
		FF Finish Flange		
		(As suffix to color)		



FIVE YEAR
Warranty

*Consult factory for other reflector finishes.
1. Must specify in 5° increments.

OM4100A19-CS**Photometric Data****Clear Specular Reflector**

Report Number: F00485

Lamp: 100W A19 Inside Frost

Total Lumens: 1750

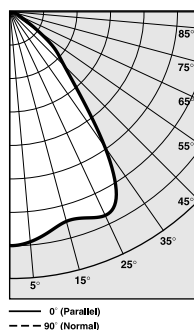
Fixture Efficiency: = 64.3%

IES File: EY2001.IES

S/MH Ratio = 1.1

Beam Angle: 77.81

LIGHTING PERFORMANCE DATA		
CEILING HEIGHT* (FT.)	INITIAL FOOTCANDLES	BEAM DIAMETER (FT.-IN.)
8	23.6	8-10
10	12.7	12-1
12	7.9	15-3
14	5.4	18-6
16	3.9	21-9

DISTRIBUTION CURVE

DEGREES	CANDELA	
	AT 0°	AT 90°
90	0	
85	0	0
75	0	0
65	0	0
55	73	3645
45	213	8588
35	512	
25	691	
15	652	
5	703	
0	714	

**COEFFICIENTS OF UTILIZATION
ZONAL CAVITY METHOD**

Effective Floor Cavity Reflectance 0.20						
RC	80		70		50	
	50	30	50	30	50	30
0	77	77	75	75	71	71
1	71	69	70	68	67	66
2	66	64	65	63	63	61
3	61	58	61	58	59	56
4	57	53	56	53	55	52
5	53	49	52	49	51	48
6	49	45	49	45	48	44
7	45	41	45	41	44	40
8	42	38	41	37	41	37
9	39	34	38	34	38	34
10	36	31	35	31	35	31

*Readings at working plane, 2'6" above floor. Beam Angle and Diameter Cutoff at 50% of max.
Candlepower Coefficients used at effective reflectances of: 70% Ceiling, 50% Walls, 20% Floor

To convert values for optional reflector colors, multiply by:
Gold .90 Bronze .82 Pewter .87

Additional photometric test files are available @ omegalighting.com

OMEGA
LIGHTING

OMEGA LIGHTING:
776 South Green St., Tupelo, MS 38804
Phone 662.842.7212 FAX 662.841.5501

CANADIAN DIVISION:
189 Bullock Drive, Markham, Ontario, Canada L3P 1W4
Phone 905.294.9570 FAX 800.268.0003