

OM4100A19WW

4" Reflector Wall Washers

CAT. NO:

TYPE:

PROJECT:

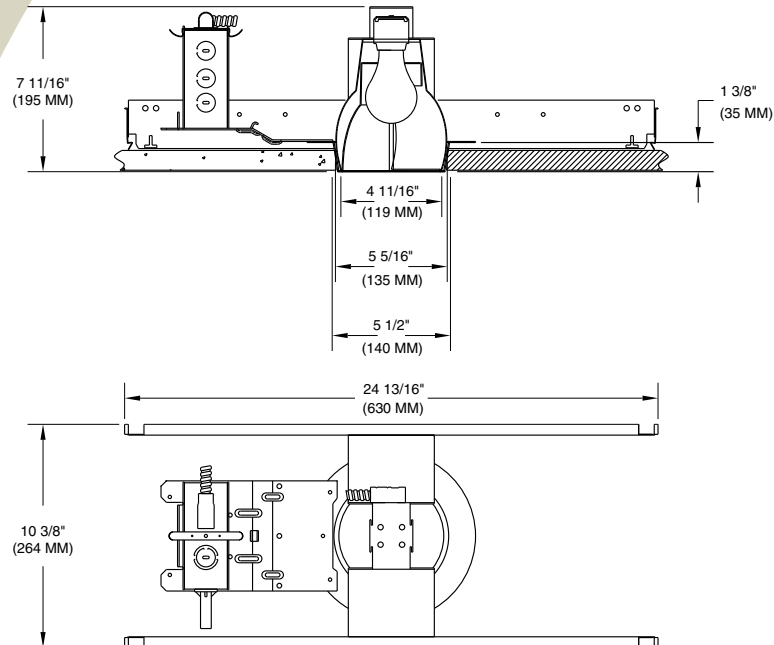
PRODUCT INFORMATION

Applications

A small aperture wall washer for use with economical A type lamps. Provides smooth, even light distribution on vertical surfaces for areas such as lobbies, reception areas, restaurants and offices.

Specifications

- Mounting pan** - Precision die-stamped 16 gauge galvanized steel mounting pan and yoke assembly. Accommodates ceiling materials up to 1-3/8" thick.
- Installation** - Mounting pan has pre-installed C-channel with vertical and horizontal adjustments. Junction box and mounting brackets are accessible from below ceiling.
- Reflectors** - Precision spun .051 aluminum reflector, self flanged with clear specular Alzak® finish. Reflector is screw mounted for positive attachment to socket assembly. Separate kicker reflector standard in semi-specular clear finish. Reflector rotates 360° for proper horizontal alignment. Standard flat flange is painted white. Optional polished flange matching reflector finish available, add FF to catalog number.
- Socket** - Medium base 250V porcelain socket with nickel-plated copper screw shell and 200°C wire positions lamp at optical focal plane of reflector for maximum performance.
- Junction box** - Extra large 43.75-cubic inch 16 gauge galvanized steel with snap-on covers. Approved for through wiring with up to 8 #12 AWG conductors.
- Thermal protection** - A thermal protection device which meets all U.L. and NEC requirements is standard.
- U.L. Listed** - For use in damp locations and approved for Through Branch Circuit Wiring. I.B.E.W. union made.



Canadian Specifications may vary from these shown, consult Canadian Division.

CATALOG SYSTEM AND OPTIONS

EXAMPLE OF COMPLETE CATALOG NUMBER: OM4100A19WW-CS

OMEGA Apr.	Lamp (by others)	Reflector (required)	Reflector Finish*	Frame Options**
OM4	100 A19	WW Wall Wash DWW Double Wall Washer CWW Corner Wall Washer	CS Clear Specular CSS Clear Semi-Specular HZ Haze GS Champagne Gold Specular WT Wheat PW Pewter FF Finish Flange (As suffix to color)	FB Flat Bar Hangers



FIVE YEAR
Warranty

OM4100A19WW-CS

Photometric Data

Wall Washer with Clear Reflector

Source: Incandescent

Lamp: 100W A19

Reflectances: 80% ceiling, 50% walls, 20% floor

Maintenance Factor: 1.0

IES File: WY2001.IES

Distance from ceiling (ft)	2'6" from wall, 2'6" on center		2'6" from wall, 3' on center		3' from wall, 3' on center		3' from wall, 4' on center	
	Below Fixtures	Between Fixtures	Below Fixtures	Between Fixtures	Below Fixtures	Between Fixtures	Below Fixtures	Between Fixtures
1	16	16	15	14	8	8	6	6
2	20	20	18	17	14	14	13	12
3	17	17	15	15	13	12	10	10
4	14	15	14	14	11	10	9	9
5	11	12	11	11	10	9	9	9
6	9	9	9	9	8	8	7	7
7	7	7	8	8	7	6	6	6

OM4100A19DWW-CS

Photometric Data

Double Wall Washer with Clear Reflector

Source: Incandescent

Lamp: 100W A19

Reflectances: 80% ceiling, 50% walls, 20% floor

Maintenance Factor: .70

IES File: WY2001D.IES

Distance from ceiling (ft)	2' from wall, 2' on center		2' from wall, 2'6" on center		2' from wall, 3' on center	
	Below Fixtures	Between Fixtures	Below Fixtures	Between Fixtures	Below Fixtures	Between Fixtures
1	15	14	13	11	12	10
2	21	20	18	17	16	15
3	17	17	15	14	13	12
4	16	16	14	14	12	12
5	13	13	12	12	11	11
6	11	11	10	10	9	9
7	9	9	8	8	8	8

Additional photometric test files are available @ omegalighting.com
OMEGA
LIGHTING

OMEGA LIGHTING:
776 South Green St., Tupelo, MS 38804
Phone 662.842.7212 FAX 662.841.5501

CANADIAN DIVISION:
189 Bullock Drive, Markham, Ontario, Canada L3P 1W4
Phone 905.294.9570 FAX 800.268.0003