

OM6250PAR38RADJ45

6" PAR Recessed Adjustables

CAT. NO:

TYPE:

PROJECT:

PRODUCT INFORMATION

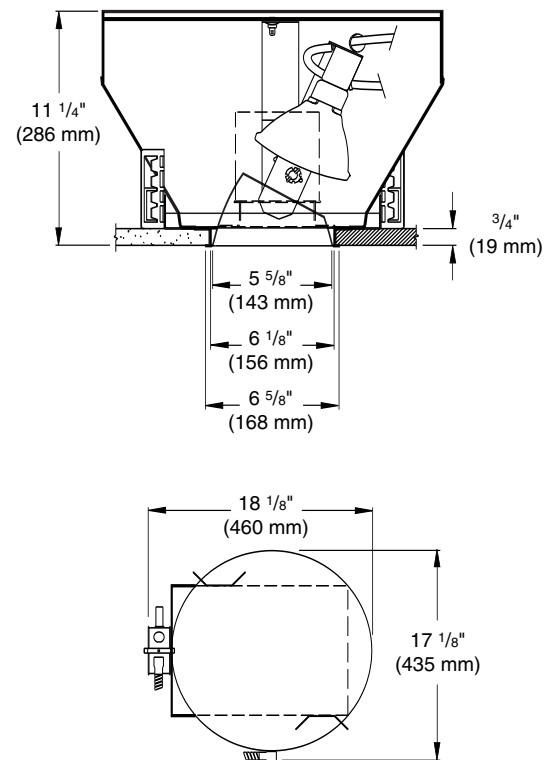
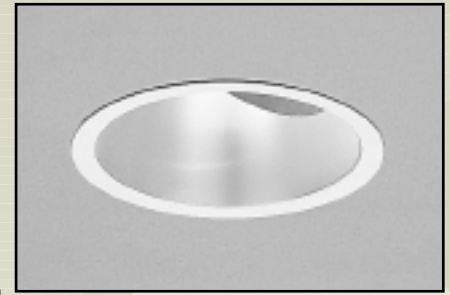
Applications

Recessed 45° adjustable downlight well suited for general or accent lighting in sloped ceiling applications, auditoriums, schools, churches, restaurants, hotels and offices. Full horizontal rotation makes this fixture ideal for highlighting store displays, sculpture, or vertical surfaces. Low brightness matches all other 6" aperture downlights from Omega.

Specifications

- Mounting pan** - Precision die-formed 20 gauge bonderized steel mounting pan.
- Housing** - Lower housing of 19 gauge aluminum, matte black finish. Upper housing of 20 gauge bonderized steel, matte black finish. Adjustable yoke allows full 360° horizontal rotation and 45° vertical tilt for complete aiming flexibility.
- Installation** - Mounting pan has pre-installed universal mounting brackets with vertical adjustment. Junction box and mounting brackets are accessible from below ceiling. Allow 2" above unit for servicing from below. For 30" C-channel hanger pair, specify Q1030 accessory, ordered separately. For 27" flat bar hangers, specify Q1031 accessory, ordered separately.
- Trim** - Precision spun .051 aluminum, self flanged with clear specular Alzak finish, angle cut at 45° for maximum aiming flexibility. Standard flat flange is painted white. Optional polished flange matching finish available, add FF to catalog number.
- Socket** - Medium base 250V porcelain socket with nickel-plated copper screw shell and 200°C wire.
- Junction box** - Large 28-cubic inch 14 gauge galvanized steel with snap-on covers. Approved for through wiring with up to 8 #12 AWG conductors.
- Thermal protection** - A thermal protection device which meets all U.L. and NEC requirements is standard.
- U.L. Listed** - For use in damp locations and approved for Through Branch Circuit Wiring. Fixtures using lamp wattages above 150W must be installed in fire resistant construction. I.B.E.W. union made.

- Canadian Specifications may vary from these shown, consult Canadian Division.



6

CATALOG SYSTEM AND OPTIONS

EXAMPLE OF COMPLETE CATALOG NUMBER: **OM6250PAR38RADJ45-CS**

OMEGA Apr.	Lamp (by others)	Product Family	Reflector Finish*	Frame Options**
OM6	250 PAR38 300 R40	RADJ45	-	-
			CS Clear Specular	FB Flat Bar Hangers
			CSS Clear Semi-Specular	
			HZ Haze	
			GS Champagne Gold Specular	
			WT Wheat	
			PW Pewter	
			FF Finish Flange	
			(As suffix to color)	



FIVE YEAR
Warranty

*Consult factory for other reflector finishes.

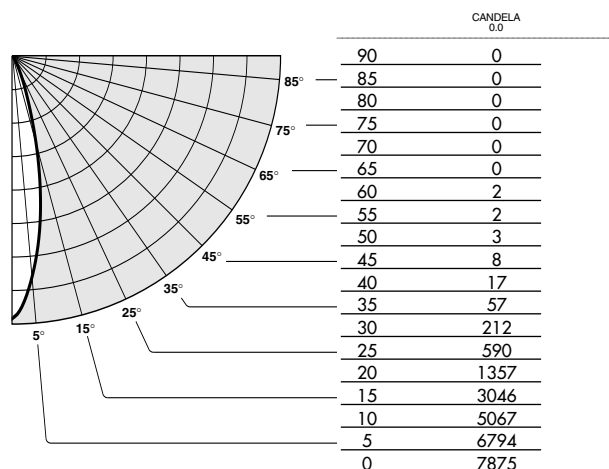
OM6250PAR38RADJ45-CS**Adjustable Downlight with Clear Reflector**

Report Number: L1627

Lamp: Q250W PAR38 FL

IES File: C3812FL.IES

Lamp in 0° Downlight Position

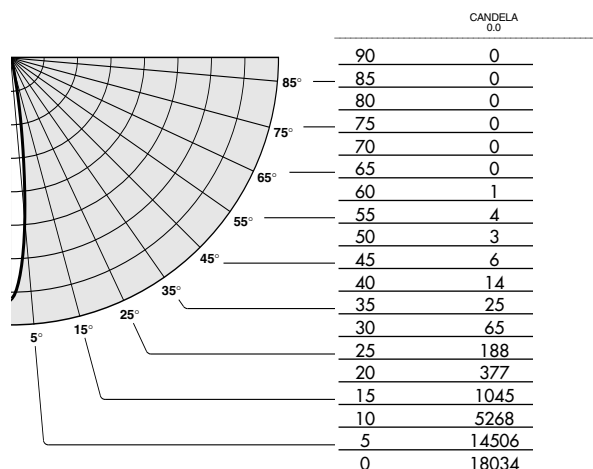
DISTRIBUTION CURVE**PHOTOMETRIC DATA****OM6250PAR38RADJ45-CS****Adjustable Downlight with Clear Reflector**

Report Number: L1626

Lamp: Q250W PAR38 SP

IES File: C3812SP.IES

Lamp in 0° Downlight Position

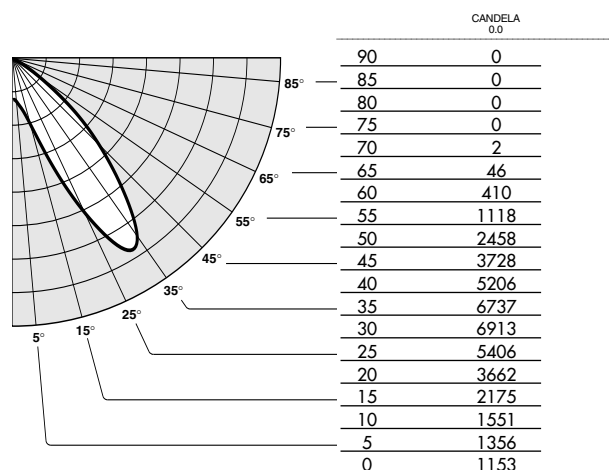
DISTRIBUTION CURVE**PHOTOMETRIC DATA****Adjustable Downlight with Clear Reflector**

Report Number: L1721

Lamp: Q250W PAR38 FL

IES File: C3812FLT.IES

Lamp in 35° Tilt Position

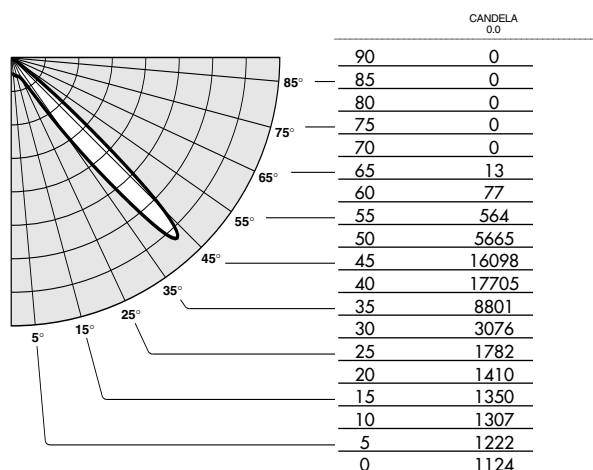
DISTRIBUTION CURVE**PHOTOMETRIC DATA****Adjustable Downlight with Clear Reflector**

Report Number: L1725

Lamp: Q250W PAR38 SP

IES File: C3812SPT.IES

Lamp in 35° Tilt Position

DISTRIBUTION CURVE**PHOTOMETRIC DATA**Additional photometric test files are available @ omegalighting.com**OMEGA**
LIGHTING**OMEGA LIGHTING:**
776 South Green St., Tupelo, MS 38804
Phone 662.842.7212 FAX 662.841.5501**CANADIAN DIVISION:**
189 Bullock Drive, Markham, Ontario, Canada L3P 1W4
Phone 905.294.9570 FAX 800.268.0003