

OM8200A23WW

8" Open Reflector Wall Washers

CAT. NO:

TYPE:

PROJECT:

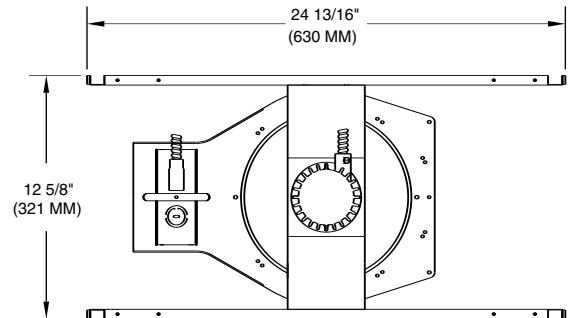
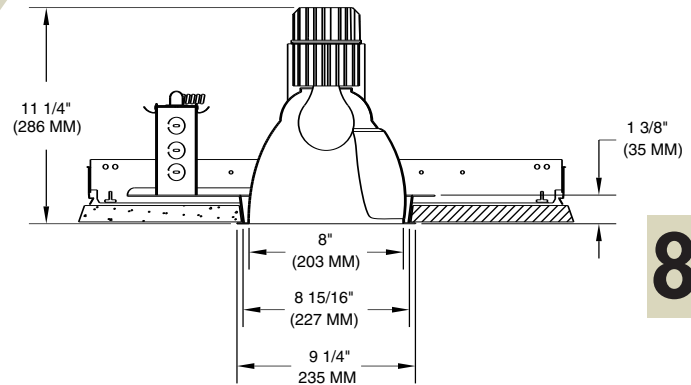
PRODUCT INFORMATION

Applications

A combination wall washer and downlight for use with economical A type incandescent lamps. Provides smooth, even light distribution on vertical surfaces in addition to supplementing general room illumination in areas such as lobbies, reception areas, schools, restaurants, hotels and offices.

Specifications

- Mounting pan** - Precision die-stamped 16 gauge galvanized steel mounting pan and yoke assembly. Accommodates ceiling materials up to 1-3/8" thick.
- Installation** - Mounting pan has pre-installed C-channel with vertical and horizontal adjustments. Yoke adjusts for proper positioning of lamp within reflector. Junction box and mounting brackets are accessible from below ceiling.
- Reflectors** - Precision spun .051 aluminum reflector, self flanged with clear specular Alzak finish. Reflector is screw mounted for positive attachment to socket assembly. Separate kicker reflector standard in semi-specular clear finish. Reflector rotates 360° for proper horizontal alignment. Standard flat flange is painted white. Optional polished flange matching reflector finish available, add FF to catalog number.
- Socket** - Medium base 250V porcelain socket with nickel-plated copper screw shell and 200°C wire positions lamp at optical focal plane of reflector for maximum performance.
- Junction box** - Extra large 43.75-cubic inch 16 gauge galvanized steel with snap-on covers. Approved for through wiring with up to 8 #12 AWG conductors.
- Thermal protection** - A thermal protection device which meets all U.L. and NEC requirements is standard.
- U.L. Listed** - For use in damp locations and approved for Through Branch Circuit Wiring. I.B.E.W. union made.



8

Canadian Specifications may vary from these shown, consult Canadian Division.

CATALOG SYSTEM AND OPTIONS

EXAMPLE OF COMPLETE CATALOG NUMBER: OM8200A23WW-CS

OMEGA Apr.	Lamp (by others)	Reflector (required)	Reflector Finish*	Frame Options
OM8	200 A23 150 A21	WW Wall Wash DWW Double Wall Wash CWW Corner Wall Wash	CS Clear Specular CSS Clear Semi-Specular HZ Haze GS Champagne Gold Specular WT Wheat PW Pewter FF Finish Flange (As suffix to color)	FB Flat Bar Hangers SA6 Sloped Ceiling Adapter



FIVE YEAR
Warranty

*Consult factory for other reflector finishes.

OM800A23WW-CS

Photometric Data

Wall Washer with Clear Reflector

Source: Incandescent

Lamp: 200W A23 Inside Frost

Reflectances: 80% ceiling, 50% walls, 20% floor

Maintenance Factor: .70

IES File: F20961.IES

Distance from ceiling (ft)	2'6" from wall, 2'6" on center		2'6" from wall, 3' on center		3' from wall, 3' on center	
	Below Fixtures	Between Fixtures	Below Fixtures	Between Fixtures	Below Fixtures	Between Fixtures
1	19.4	17.9	17.3	14.5	12.1	10.4
2	35.5	31.1	31.0	25.2	23.0	21.2
3	50.3	47.6	44.6	37.5	31.9	29.0
4	46.5	46.0	39.7	38.3	37.3	35.6
5	36.0	35.6	30.3	30.8	33.1	33.0
6	30.4	29.1	25.7	25.1	27.2	26.8
7	27.4	26.7	23.6	22.7	23.9	22.8
8	26.0	25.9	22.6	22.0	22.6	21.8
9	24.7	25.0	21.6	21.3	21.5	21.0

Additional photometric test files are available @ omegalighting.com