

OM8200A23MRIWW

8" Reflector Wall Washers

CAT. NO:

TYPE:

PROJECT:

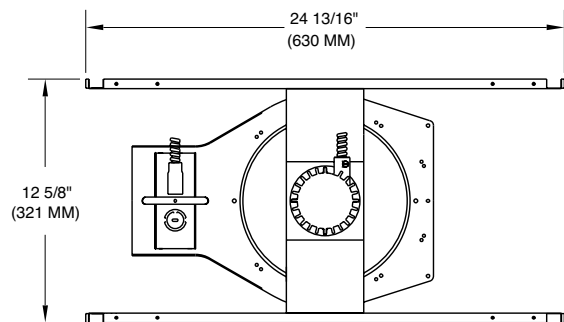
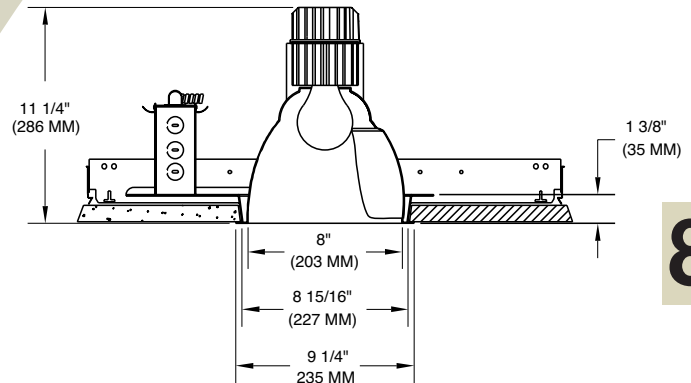
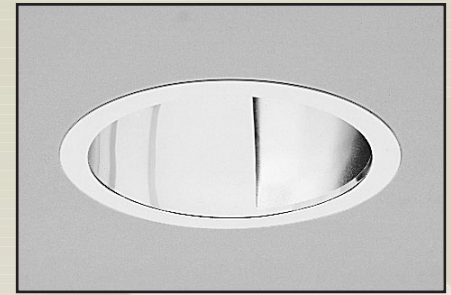
PRODUCT INFORMATION

Applications

A special application fixture constructed of non ferrous metals for use in Magnetic Resonance Imaging hospital facilities.

Specifications

- Mounting pan** - Precision die-formed 14 gauge aluminum mounting pan and yoke assembly.
- Installation** - Mounting pan has pre-installed C-channel with vertical and horizontal adjustments. Yoke adjusts for proper positioning of lamp within reflector. Junction box and mounting brackets are accessible from below ceiling.
- Reflectors** - Precision spun .051 aluminum reflector, self flanged with clear specular Alzak finish. Reflector is screw mounted for positive attachment to socket assembly. Separate kicker reflector standard in semi-specular clear finish. Reflector rotates 360° for proper horizontal alignment. Standard flat flange is painted white. Optional polished flange matching reflector finish available, add FF to catalog number.
- Socket** - Medium base 250V porcelain socket with nickel-plated copper screw shell and 200°C wire positions lamp at optical focal plane of reflector for maximum performance.
- Junction box** - Extra large 43.75-cubic inch 14 gauge aluminum with snap-on covers. Approved for through wiring with up to 8 #12 AWG conductors.
- Thermal protection** - A thermal protection device which meets all U.L. and NEC requirements is standard.
- U.L. Listed** - For use in damp locations and approved for Through Branch Circuit Wiring. I.B.E.W. union made.



* Canadian Specifications may vary from these shown, consult Canadian Division.

8

CATALOG SYSTEM AND OPTIONS

EXAMPLE OF COMPLETE CATALOG NUMBER: OM8200A23MRIWW-CS

OMEGA Appl.	Lamp (by others)	Product Family	Reflector (required)	Reflector Finish*
OM8		MRI		-
	150 A21	Magnetic	WW Wall Wash	CS Clear Specular
	100 A19	Resonance	DWW Double Wall Wash	CSS Clear Semi-Specular
		Imaging	CWW Coener Wall Wash	HZ Haze
				GS Champagne Gold Specular
				WT Wheat
				PW Pewter
				FF Finish Flange
				(As suffix to color)



FIVE YEAR
Warranty

*Consult factory for other reflector finishes.

OM8200A23MRIWW-CS

Photometric Data

Wall Washer with Clear Reflector

Source: Incandescent

Lamp: 200W A23

Reflectances: 80% ceiling, 50% walls, 20% floor

Maintenance Factor: 1.0

IES File: F20961.IES

Distance from Fixtures	2'6" from wall, 2'6" on center		2'6" from wall, 3' on center		3' from wall, 3' on center	
	Below ceiling (ft)	Between Fixtures	Below Fixtures	Between Fixtures	Below Fixtures	Between Fixtures
1	19.4	17.9	17.3	14.5	12.1	10.4
2	35.5	31.1	31.0	25.2	23.0	21.2
3	50.3	47.6	44.6	37.5	31.9	29.0
4	46.5	46.0	39.7	38.3	37.3	35.6
5	36.0	35.6	30.3	30.8	33.1	33.0
6	30.4	29.1	25.7	25.1	27.2	26.8
7	27.4	26.7	23.6	22.7	23.9	22.8
8	26.0	25.9	22.6	22.0	22.6	21.8
9	24.7	25.0	21.6	21.3	21.5	21.0

OM8200A23MRIDWW-CS

Photometric Data

**Double Wall Washer with
Clear Reflector**

Source: Incandescent

Lamp: 200W A23

Reflectances: 80% ceiling, 50% walls, 20% floor

Maintenance Factor: .70

IES File: F20962.IES

Distance from ceiling (ft)	2'6" from wall, 2'6" on center		2'6" from wall, 3' on center		3' from wall, 3' on center		3' from wall, 4' on center	
	Below Fixtures	Between Fixtures	Below Fixtures	Between Fixtures	Below Fixtures	Between Fixtures	Below Fixtures	Between Fixtures
1	36.8	34.3	32.1	27.7	23.6	21.8	19.1	15.8
2	58.4	53.2	50.6	43.5	36.1	34.7	29.2	24.6
3	62.6	56.7	54.4	46.1	47.2	41.0	37.8	29.7
4	45.8	49.5	38.6	41.4	41.1	39.7	32.8	28.6
5	36.6	38.2	30.1	33.2	32.1	35.0	24.3	26.6
6	30.7	29.9	25.9	25.9	27.3	28.3	19.9	22.7
7	26.1	25.5	22.6	21.7	23.9	23.4	17.9	18.8
8	23.2	23.2	20.4	19.7	21.6	20.9	16.7	16.5
9	21.1	21.4	18.7	18.3	19.6	19.2	15.4	14.8