



Photometric Data

LTL#: 20942

CAT#: U25 1254 UV 3PS E 84I

Zonal Lumen Summary

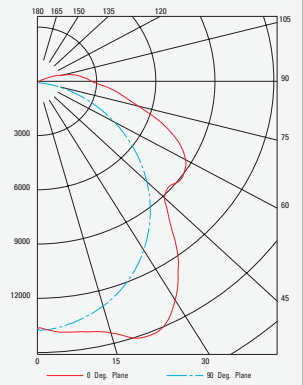
ZONE	LUMENS	%LAMP	%FIXT
0-30	10977	20.8	22.1
0-40	18534	35.1	37.3
0-60	33304	63.1	67.0
0-90	47122	89.2	94.7
90-180	2621	5.0	5.3
0-180	49742	94.2	100.0

Total Luminaire Efficiency: 94.2%

CIE Type: Direct

Plane: 0-Deg 90-Deg

Spacing Criteria: 1.24 1.48



U25 SERIES

General area light distribution fluorescent High-Bay with up-light

A high efficiency, 25" wide fluorescent high-bay that provides exceptional light distribution for general areas with a design that allows for a controlled, energy saving up-light component. Applications include warehouses, manufacturing facilities, open construction retail and gymnasiums with the wireguard safety option.

Heat Dissipation

The arc bottom to the fixtures in this series creates a means for exceptional heat dissipation. Removing heat build-up allows lamps to perform at their maximal lumen output temperature rating. Additionally, as heat rolls off the sides of this fixture, this reduces the possibility of dirt build up on the reflectors and at the vent holes.

Light Distribution

The bottom arc angle of this fixture series provides a wide distribution pattern excellent for use in general or open areas. When used in aisles with racking or shelving, turning this fixture perpendicular to the aisle allows the bottom arc to throw light evenly along the floor, lighting between the fixtures. The arced bottom also enhances the vertical footcandles, providing more even illumination down the product walls.

Mounting Methods

U25 fixtures offer flexible mounting methods that most commonly include: standard chain hangers and surface mounting. There are several other mounting options for this fixture series, and they are listed as "hanging options" below.

Hanging Options

- Surface Mount [Mounting holes provided in the housing] (Standard)
- Chain Mount [Chain hangers are supplied with the fixture] (Standard)
- Quick Cable [QC – Quick hang cable system] (Optional)
- Junction Box [JB – Slide-on splice box for 3/4" stem] (Optional)
- Extreme Pendant Stabilizer [PSX – Pendant Stabilizing Cross Bracket for single point hanging with a 3/4" stem] (Optional)

- Hook [SPSXH – 12" Stem, extreme pendant stabilizer & hook for hanging in loop or eye-bolt] (Optional)
- Quick Toggle [SPSXT – 12" Stem, extreme pendant stabilizer & quick toggle hanger for hanging in an eye-bolt] (Optional)

Product Construction

The U25 fixture housing is brake formed from heavy gauge cold rolled steel. Ends and socket plates are permanently riveted together for strength and rigidity. The housing is post painted with a durable, highly reflective powder-coat finish.

Optical Reflector

The system is precision brake formed of the selected aluminum material, enhanced aluminum or highly reflective white. The one piece reflector is removable without the use of tools, using 1/4 turn fasteners to secure it in place.

Lampholders

Made of a Polycarbonate material; these locking-style lampholders are utilized to ensure positive lamp retention. Additionally, the material contributes to a longer life product in high temperature applications.

Ballasts

All ballasts are electronic programmed-start (T5HO) or instant-start (T8) as a standard. Optional ballasts are available, consult factory for available systems and system specifications. Available voltages: 120v, 277v, 347v, voltage sensing 120-277v and 347-480v.

Listings

All fixtures are UL and CUL listed.

Please specify when ordering

Fixture Series	Lens	# of Lamps	Lamp Type	Voltage	# Ballasts	Ballast Type	Reflector	Hanging	Options	Lamp Color	Lamp Options
U25	—										

Fixture ordering guide

Fixture Series	Lens	# of Lamps	Lamp Type	Voltage	# Ballasts	Ballast Type	Reflector	Hanging	Options	Lamp Color	Lamp Options* [†]
U25	—	11	32	12	3	HI	E	BLANK	C ()	BLANK	HP
		12	54	27	4	LI	W	JB	6TI	830	A
				34	5	SI	B	PSX	6T2	835	TG
				UV	6	SI+		QC	E ()	841	SS
				HV		PS		QC ()	F	850	ES ()
						PSL		SPSXH	OS ()		XL
						PSH		SPSXT	SC		
						PD			WG		
						SDH			20G		
						AX			SDT		
									PC		

*[†] Consult factory for manufacturing specific ordering codes/availability.

Available fixture selections

Lamp Type Selections	Ballast Selections	Reflector Selections	Options Selections	Lamp Color Selections
32 F32T8 System 54 F54T5HO System	HI High Ballast Factor (HBF) Electronic* LI Low Ballast Factor (LBF) Electronic* SI Standard Ballast Factor (NBF) Electronic* SI+ I.OBF Electronic* PS Programmed Start (NBF) PSL Programmed Start LBF* PSH Programmed Start HBF* PD Programmed Start Dimming SDH Step Dimming HBF (100% to 60% Dimming)* AX Daylight Harvesting Ballast with remote mount photosensor*	E Enhanced Aluminum W Highly Reflective White Aluminum B 95% Reflective Extreme White Aluminum	C () Single Circuit Cord (Specify Length) 6TI 6' Cord with L5-I5 Locking End 6T2 6' Cord with L7-I5 Locking End E () Emergency Pack (# Lumens) F Inline Fuse OS () Occupancy Sensor (Specify Lamps on Low/Lamps on High) SC Safety Cable WG Wire Guard 20G 20 Gauge SDT Step Down Transformer (480V to 277V) PC Photocell	BLANK Lamps Not Included 830 80+ CRI, 3000K 835 80+ CRI, 3500K 841 80+ CRI, 4100K 850 80+ CRI, 5000K
Voltage Selections		Hanging Selections		Lamp Options Selections
12 120V 27 277V 34 347V UV 120-277V HV 347-480V		Blank V-Chain Hangers JB Slide-On Junction Box PSX Double Reinforced Pendant Stabilizer QC Quick Hang Cable (10') QC () Quick Hang Cable (Specify Length) SPSXH 12" Stem/PSX/Hook SPSXT 12" Stem/PSX/Toggle		HP High Performance, Long Life Lamps* A Amalgam Tip Lamps** TG Tubeguarded Lamps SS Shattershielded Lamps ES () Energy Saver (Specify Wattage) XL Long Life* * T8 Only ** T5HO Only

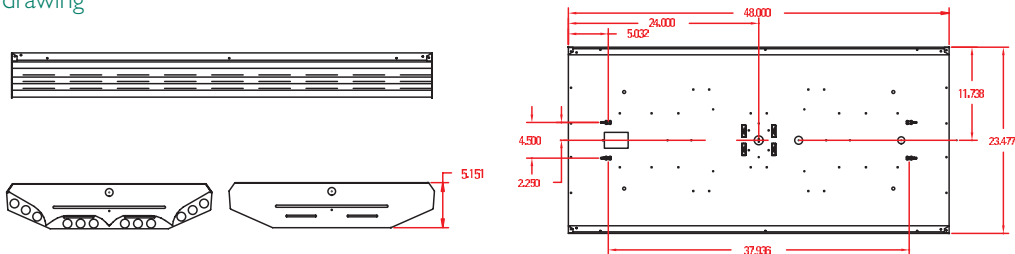
Common fixture selections

Catalog number	System	# of lamps	Wattage (120/277V)*	Initial system lumens*	Mean system lumens*
U25 1154 UV 3PS E	T5HO	11	652w / 637w	55,150	52,392
U25 1232 UV 3HI E	T8	12	444w / 435w	43,896	42,480
U25 1232 UV 3PSH E	T8	12	441w / 432w	43,152	41,760
U25 1254 UV 3PS E	T5HO	12	692w / 678w	60,000	58,200

*Wattages may vary depending on the ballast manufacturer and lamp type used.

Initial and mean system lumens are the initial/mean lumen output of the lamp/ballast system as rated by lamp and ballast manufacturer and may vary from manufacturer to manufacturer. Specifications and dimensions subject to change without notice. Contact Philips Optimum for current availability and ordering information

Dimensional drawing



Fixture Type: _____

Catalog #: _____ Quantity: _____

Project: _____

High Bay | www.philips.com/optimum | Phone (800) 541-9082 | Fax (855) 231-0414

