

CATALOG NO. _____



TYPE NO. _____ JOB NAME _____

Glo/Prism Bay Induction Multi-Bay 22" Series



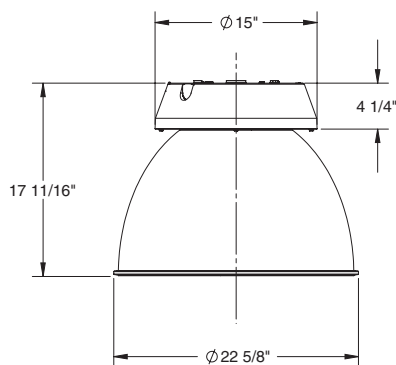
ORDERING INFORMATION

Catalog Number: Example: MBA2216584IND-1

MBA	22			IND		
FIXTURE	REFLECTOR SIZE	WATTAGE	COLOR TEMP.	LAMP SOURCE	OPTIONS	VOLTAGE
MBA- Aluminum Reflector Open	22-22"	55-55w 85-85w 165-165w	83-3000K 84-4000K 85-5000K	IND-Induction	See Below	1-100-120V 4-200-277V

TECHNICAL INFORMATION

Induction system supplied with lamp vessel and socket. 35°C ambient maximum.



OPTION DETAILS

- F-** Single fusing (120v or 277v)
- G-** Double fusing (208v or 240v)
- J-** 3-foot cord, plug (15 amp), hook
- K-** 3-foot cord, plug (20 amp), hook
- **QM-** Quick-mount plate (25°C ambient maximum when junction box is ceiling or recessed mounted)

PRODUCT SPECIFICATIONS

- Glo/Prism Bay fixtures are typically used in aisles, corridors, warehouses and stockrooms, providing high vertical illumination
- Injection molded high impact UV stabilized acrylic reflector/ refractor provides high vertical footcandle yielding high spacing ratio
- Mounting tapped 3/4"-14 NPS, accepts 3/4" pipe or 715NEW hook
- For use in open air ambient
- Precision die-cast aluminum housing, finished in DuraplexII gray polyester powder, acts as a heat sink for maximum heat dissipation
- Available quick-mount plate permits easy mounting over junction boxes that are pendant, ceiling or recessed mounted**
- Induction rated for 100,000 hours

