

CATALOG NO. _____

TYPE NO. _____

JOB NAME _____

MCL Series

Medium Cutoff Roadway Luminaire

(Type IV Forward Throw Distribution)



ORDERING INFORMATION

Catalog Number: Example: MCL4400MATLR/PC-8

MCL	4				
FIXTURE	DISTRIBUTION	WATTAGE	LAMP SOURCE	OPTIONS	VOLTAGE
MCL-Medium Cutoff Roadway Luminaire	4-Forward Throw	150-150W 175-175W 250-250W 320-320W 350-350W 400-400W	MA-Metal Halide LX-High Pressure Sodium PMA-Super constant wattage auto regulated pulse start Metal Halide	A-Adjustable arm 15° max. F-Single fusing 120V, 277V FFS-Double fusing 208V, 240V, 480V TLR/PC-Twist lock photocontrol PCB-Button type photocontrol (not available with "A" option)	1-120V 2-208V 3-240V 4-277V 5-480V 8-120V 208V 240V 277V

ACCESSORIES

MCLVS-MCL Vandal Shield (Lexan).

MCLGS-MCL Glare Shield.

MCL552-Replacement Lens Kit.

MOUNTING ACCESSORIES

MCLTA25R-two @ 90°

MCLTA35R-three @ 120°

MCLRPA4-MCL 4" Round Pole Adapter

MCLTA10R-MCL Tenon Adapter (2 3/8 OD) drilled for one

MCLTA20R-MCL Tenon Adapter (2 3/8 OD) drilled for two @ 180°

MCLTA30R-MCL Tenon Adapter (2 3/8 OD) drilled for three

MCLTA40R-MCL Tenon Adapter (2 3/8 OD) drilled for four

MCLTA25S-two @ 90°

MCLTA10S-MCL Tenon Adapter (2 3/8 OD) drilled for one SQ

MCLTA20S-MCL Tenon Adapter (2 3/8 OD) drilled for two @ 180° SQ

MCLTA30S-MCL Tenon Adapter (2 3/8 OD) drilled for three SQ

MCLTA40S-MCL Tenon Adapter (2 3/8 OD) drilled for four SQ

MC10-MCL 5" SQ Wall Mounting Plate

206WBR-MCL 5" SQ Thru Wire Box

MCL11A-MCL 11" Arm

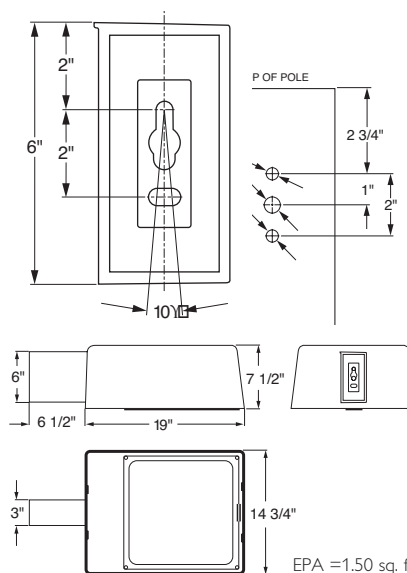
MCLARMTLRSC-MCL 6" arm with Twist Lock Photocontrol and Shorting Cap

MCLHSS-House Side Shield

See page 3-A for mounting accessories.

TECHNICAL INFORMATION

High Pressure Sodium		Metal Halide	
150W	ED-23	175W	ED-28
250W	ED-18	250W	ED-28
400W	ED-18	400W	ED-28



PRODUCT SPECIFICATIONS

- MCL Cutoff Luminaire is ideal for any outdoor application where tight light control is needed to prevent glare and light trespass. Perfect for roadways and parking lots.
- One piece die-cast aluminum housing is finished in Duraplex II bronze polyester.
- Lens frame assembly is fully gasketed with silicone to prevent dust and bug entry.
- Heat and shock resistant tempered glass lens.
- Precision formed segmented reflector.
- Tool-less entry for relamping. Lens frame opens by releasing a stainless steel latch.
- All internal electrical components are installed on a ballast tray that swings down for easy access and replacement.
- 6" die-cast aluminum arm, factory installed, with integral wiring compartment. Side access cover allows wiring connections to be made in arm.
- Key slot design allows for single person hook and placement of fixture leaving hands free for wiring.



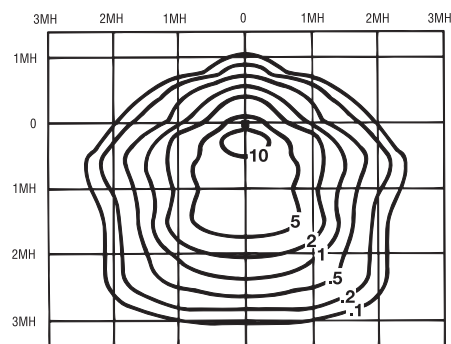
UL Wet Location Listed.
UL File Number: E86021



Shown with adjustable arm option

MCL Series Medium Cutoff Roadway Luminaire

PHOTOMETRICS



MCL4400LX
MOUNTING HEIGHT: 25', Tilt Angle 0°

WATTAGE CONVERSION:
Multiply the following factors times the footcandle values for changes in mounting height.

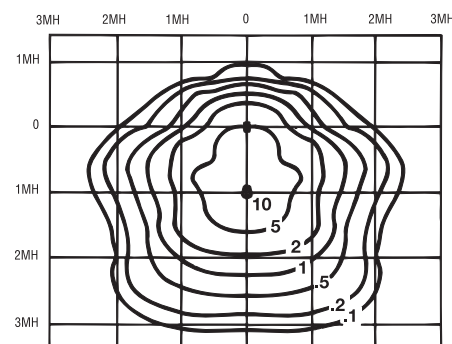
200W HPS	.44
250W HPS	.55

FOOTCANDLE CORRECTION
Multiply the following factors times the footcandle values for changes in mounting height.

To Change from 25'	
New Hght.	15' 20' 25' 30' 35' 40'
Factor	2.77 1.56 1.00 .69 .51 .39

MOUNTING HEIGHT FACTORS
FOR OTHER THAN 15 FEET
USE TABLE OR:

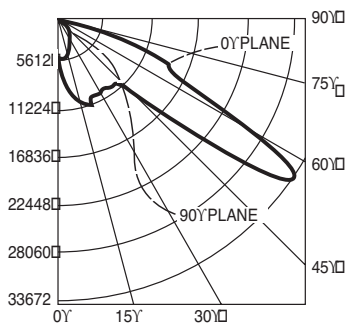
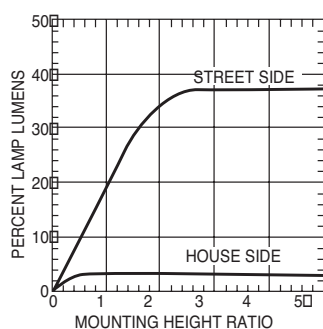
$$\text{FACTOR} = \frac{625}{(\text{Actual Mtg Height})^2}$$



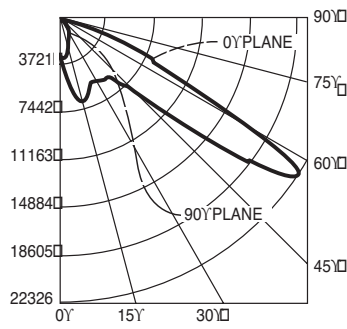
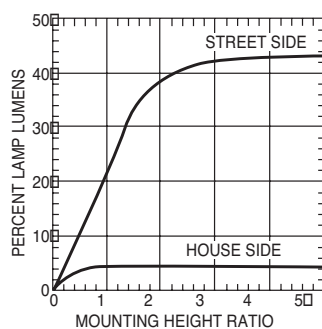
MCL4400MA
MOUNTING HEIGHT: 25', Tilt Angle 0°

WATTAGE CONVERSION:
Multiply the following factors times the footcandle values for changes in mounting height.

175W MA	.39
250W MA	.57



LUMEN DISTRIBUTION				
Hemisphere	Street	House	Total	
Upper	0.	0.	0.	0.0%
Lower	18971.	1564.	20535.	41.1%
NET OUTPUT			20535.	41.1%



LUMEN DISTRIBUTION				
Hemisphere	Street	House	Total	
Upper	0.	0.	0.	0.0%
Lower	15364.	1454.	16818.	46.7%
NET OUTPUT			16818.	46.7%

SUGGESTED SPECIFICATIONS

Fixture shall be outdoor weatherproof area lighter sharp cutoff luminaire, for HID lamps. Housing and lens frame shall each be one piece corrosion resistant die-cast aluminum with radiused edges and corners. The low E.P.A. of 1.30 luminaire shall be finished in Duraplex II™ dark bronze polyester powder. Fixture shall be furnished with an integral constant wattage high power factor ballast (type CWA), mounted to die-cast housing for heat dissipation.

Lens frame shall be one piece corrosion resistant die-cast aluminum with integral hinges and radiused corners held by two captive

stainless steel fasteners. Lens frame will provide constant equal pressure on the neoprene gasket sealing the optical chamber from rain, dust and insects. Frame will retain an optically clear, heat and impact resistant tempered glass lens, silicone sealed and held in place with retainer clips.

The mounting arm construction shall allow for securing luminaire on a square pole, all mounting hardware shall be hidden inside the arm. Mounting arrangements on one, two, three or four way shall be possible. Two unique reflectors are available, one for high pressure sodium and one for metal halide

lamps.

The hydroform reflector shall be one piece multi-faceted, high purity, aluminum with specular Alzak® finish.

Fixture shall be equipped with deluxe, glazed porcelain lamp socket with nickel plated, vibration-proof "lamp-grip", screw shell and spring-loaded center contact. Sockets in high pressure sodium units shall be pulse-rated for 4KV.

Distribution shall be IES Type IV Forward Throw.



© 2013 Koninklijke Philips N.V. (Royal Philips). All rights reserved.
Specifications are subject to change without notice.
www.philips.com/luminaires

05/13

Philips Lighting Company
200 Franklin Square Drive
Somerset, NJ 08873
Phone: 855-486-2216

Philips Lighting Company
281 Hillmount Road
Markham ON, Canada L6C 2S3
Phone: 800-668-9008