

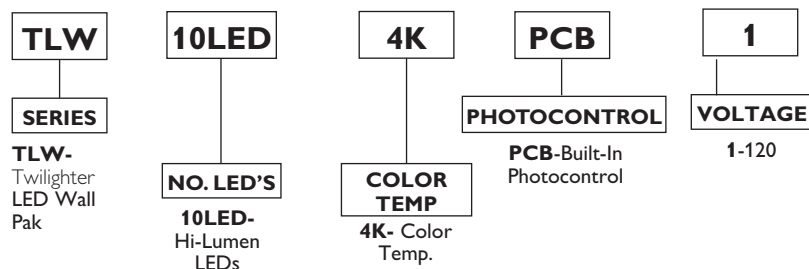
CATALOG NO. _____

TYPE NO. _____ JOB NAME _____

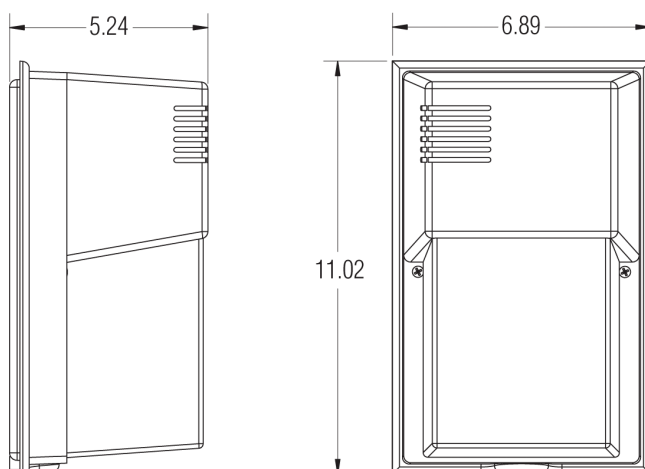
Twilighter LED Wall Pak

ORDERING INFORMATION

Catalog Number: Example: TLW10LED4KPCB-1



TECHNICAL INFORMATION



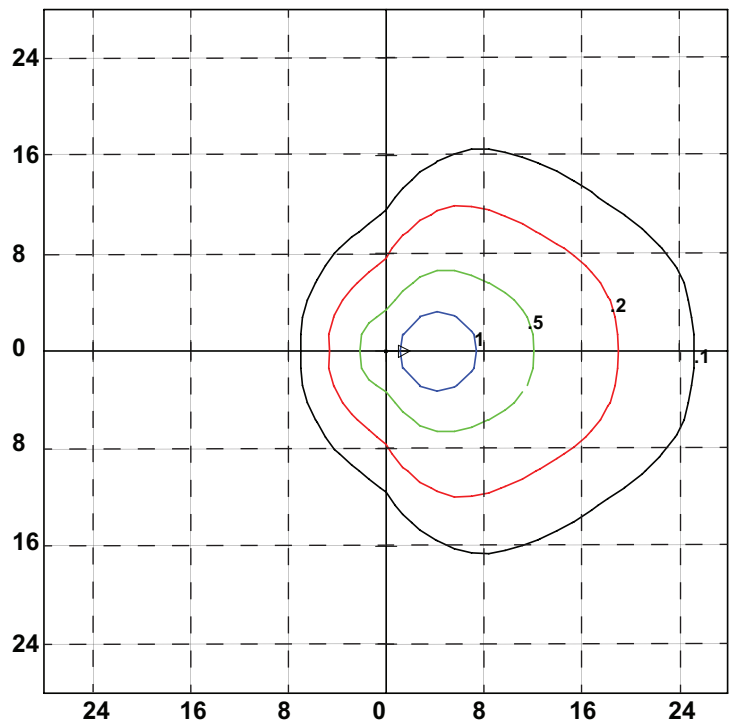
PRODUCT SPECIFICATIONS

- 13.9 watt high-powered LED array
- 50,000 hour life
- Lightweight, compact design
- Sturdy die-cast aluminum housing
- Architectural bronze UV resistant powder coat finish
- UV stabilized polycarbonate lens/refractor
- UV stabilized polycarbonate front housing
- Continuous silicone rubber gasket between housing and lens/cover
- Energy-efficient, high-powered LED Array
- Provides 707 delivered lumens, LM79
- Excellent heat management for long life
- Efficacy: 50.9 lumens per watt (LPW)
- CRI: 86
- 4386 CCT
- Operating temperature: -25°C (-13°F) to 35°C (95°F)
- Voltage: 120V 50/60Hz
- Factory-installed photocontrol
- UL Listed for wet locations
- 5-year warranty



Twilighter LED Wall Pak

PHOTOMETRIC DATA



Philips Stonco LED Twilighter Wall Pak
Photometric Filename: TLW10LED4K.IES

Characteristics

Horizontal Footcandles
Mounting Height = 8 Ft.
Light Loss Factor = 1.00
Lumens Per Lamp = N.A. (absolute photometry)
Luminaire Lumens = 710
Mounting Height = 8.00 Ft
Maximum Calculated Value = 1.39 Fc
Arrangement: Single

Footcandle Correction

Multiply the following factors times the footcandle values for changes in mounting height.

| To change from 8' | | | | | | |
|-------------------|------|------|------|-----|-----|-----|
| New Height | 6' | 7' | 8' | 9' | 10' | 12' |
| Factor | 1.78 | 1.31 | 1.00 | .79 | .64 | .44 |



© 2013 Koninklijke Philips N.V. (Royal Philips). All rights reserved.
Specifications are subject to change without notice.
www.philips.com/luminaires

05/13

Philips Lighting Company
200 Franklin Square Drive
Somerset, NJ 08873
Phone: 855-486-2216

Philips Lighting Company
281 Hillmount Road
Markham ON, Canada L6C 2S3
Phone: 800-668-9008