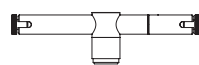
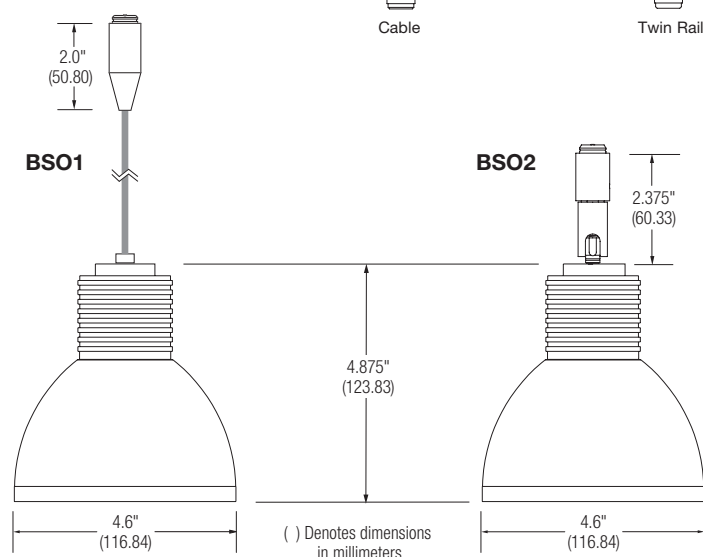
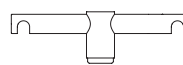


Basio

System Options



Cable



Twin Rail

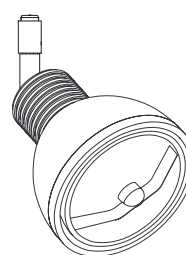


Basis Ceiling

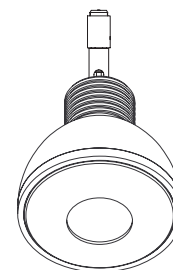


Basis Wall

* Fixture terminates to track system or monopoint with Transjack connector. Fixtures ordered with system code include Transjack connector for that system. Order fixture with "NS" code when using a monopoint.



Basio with AR11 Lamp

Basio with MR16 Lamp
with Glare Shield

Ordering Information

Fixture	System	Drop Length	Lamping	Finish
BS01 -Basio Cable Suspended (Field Adjustable)	CA4 - Cable 4" CA6 - Cable 6" TR4 - Twin Rail 4" TR6 - Twin Rail 6"	Cable: ST - Standard 72" 16"-72" - Specify Length	AR111 - 75w max. MR16 - 50w max.	AL - Satin Aluminum PN - Polished Nickel RB - Rubbed Bronze
BS02 -Basio Stem Suspended (Not Field Adjustable)	BTC - Basis Ceiling LT - Liana NS - No System Connector*	Stem: ST - Standard 7" 8"-72" - Specify Length (When ordering non-standard drop length, use whole numbers only—no fractional inches.)		(Rubbed Bronze is not available for Twin Rail)

Features

- Description:** Precision machined luminaire. Available with two lamping options and three metal finishes.
- System Options:** Basio is available for Cable 4" & 6", Twin Rail 4" & 6", Basis Ceiling Mount, Liana and low voltage monopoints.
- Lamping:** AR111 75w max. MR16 50w max (see page 2). Lamp shield standard with MR16 lamp option.
- Electrical:** Transjack connector contacts utilize 24kt gold plated brass pin and sleeve connector housed in aluminum.
- Function:** Rotates 360 degrees and pivots 90 degrees at socket. Suspended by tin braided cable or metal rod. Cable suspension is field adjustable. Stem suspension is not field adjustable. Net weight: 1.5 lbs.

Finishes

- Satin Aluminum
- Polished Nickel
- Rubbed Bronze – finish is crafted with solid brass substrate and buffed by hand to create an authentic rubbed bronze finish. Due to this hand-applied process, final finish may vary.

Labels

UL and CUL listed for dry locations only

Accessories

For MR16 lamping option only: filters, louvers, snoots and glare shield.

Job Name:

Type:

Cat. No.:

Lamp(s):

Notes:

Measuring Overall Length

Track System Fixtures

Overall length for a track system fixture is measured from the bottom of the track to the bottom of the fixture.

To calculate overall length, take the distance from the bottom of the fixture to the top of the Transjack connector* and add the system connector measurement for the selected system. Overall length differs according to the system connector selected.

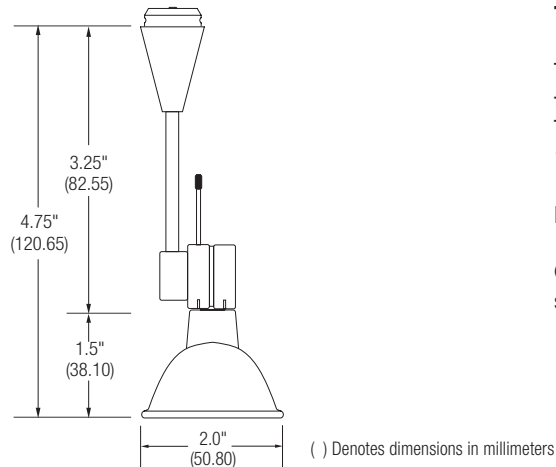
	Basis	Cable Twin Rail	Liana	NS
System Connector Measurement	.38"	.63"	.94"	0"

Monopoints

Overall length for a monopoint fixture is measured from bottom of the monopoint to the bottom of the fixture. (The monopoint canopy is measured separately.)

This measurement is equivalent to the distance from the bottom of the fixture to the top of the Transjack connector.*

Rotor



Track System Fixture Example

To calculate the overall length for the Rotor fixture on a Liana track system, add 4.75 to 0.94. Overall length for a standard Rotor on the Liana Track is 5.69". A Rotor specified at 10" would have an overall length of 10.94" on Liana.

Monopoint Fixture Example

Overall length for a standard Rotor on a monopoint is 4.75". A Rotor specified at 10" would have an overall length of 10" on a monopoint.

* In the drawing above, the distance from the bottom of the fixture to the top of the Transjack connector equals 4.75". This represents the standard (ST) length for this fixture. ST measurements in the product ordering tables are approximate for stem suspended fixtures and do not represent exact overall length. For exact ST measurements for stem suspended fixtures, reference the specification drawings.



© 2013 Koninklijke Philips N.V. (Royal Philips). All rights reserved.
Specifications are subject to change without notice.
www.philips.com/luminaires

BSO 05/13

Philips Lighting Company
200 Franklin Square Drive
Somerset, NJ 08873
Phone: 855-486-2216

Philips Lighting Company
281 Hillmount Road
Markham ON, Canada L6C 2S3
Phone: 800-668-9008