

## Translite Systems, Micro Spot G

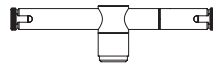
Page 1 of 3

Catalog number:

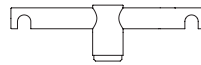
Notes:

Type:

## System Options



Cable



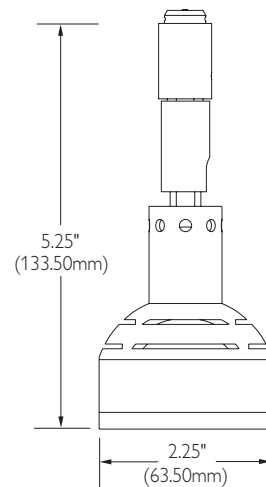
Twin Rail



Basis Ceiling



Basis Wall



\*Fixture terminates to track system or monopoint with Transjack connector. Fixtures ordered with system code include Transjack connector for that system. Order fixture with "NS" code when using a monopoint.

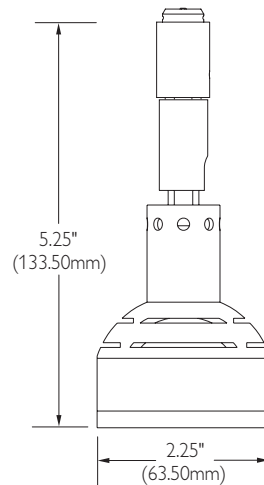
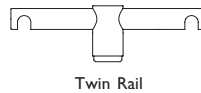
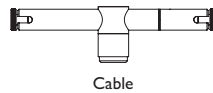
## Ordering information

Fixture	System	Overall length	Metal finish
<b>MIG-</b> Micro Spot G	<b>CA4</b> - Cable 4" <b>CA6</b> - Cable 6" <b>BTC</b> - Basis Ceiling <b>BTW</b> - Basis Wall (Max. 16") <b>TR4</b> - Twin Rail 4" <b>TR6</b> - Twin Rail 6" <b>LT</b> - Liana <b>NS</b> - No System Connector*	<b>ST</b> - Standard 5" <b>6" - 72"</b> - Specify Length (in 6" increments)  (When ordering a non-standard overall length, use whole numbers only - no fractional inches.) <b>Note:</b> When using the MIG with the MPT1-S-N or MPT1-S-R monopoints, overall fixture length must be a minimum of 9".	<b>AL</b> - Aluminum <b>PN</b> - Polished Nickel <b>GB</b> <sup>1</sup> - Gloss Black <b>WH</b> <sup>1</sup> - White <b>RB</b> - Rubbed Bronze (Rubbed Bronze is not available for Twin Rail) <sup>1</sup> (Available for BTC, BTW, or NS only)

## Translite Systems, Micro Spot G

Page 2 of 3

### System Options



\*Fixture terminates to track system or monopoint with Transjack connector. Fixtures ordered with system code include Transjack connector for that system. Order fixture with "NS" code when using a monopoint.

### Features

- Description:** Precision machined luminaire with integral single accessory holder and clear lens.
- System options:** Micro Spot G is available for Cable 4" & 6", Twin Rail 4" & 6", Basis Ceiling Mount, Liana and low voltage monopoints.
- Lamping:** MR16 50w max.
- Function:** Rotates 360 degrees and pivots 90 degrees at socket. Overall length not field adjustable.
- Electrical:** Transjack connector contacts utilize 24kt gold plated brass pin and sleeve connector housed in aluminum.

### Accessories

Filters, louvers, snoots, rings and double accessory holder.

### Metal finishes

- Satin Aluminum**
- Polished Nickel**
- Rubbed Bronze:** Finish is crafted with a solid brass substrate and buffed by hand to create an authentic rubbed bronze finish. Due to this hand-applied process, finish may vary.
- Gloss Black<sup>1</sup>**
- White<sup>1</sup>**

<sup>1</sup> (Available for BTC, BTW, or NS only)

### Labels

UL and cUL listed for dry locations only.

# Translite Systems, Micro Spot G

Page 3 of 3

## Measuring overall length

### Track system fixtures

Overall length for a track system fixture is measured from the bottom of the track to the bottom of the fixture.

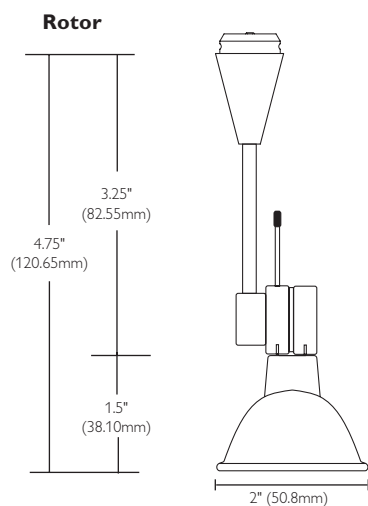
To calculate overall length, take the distance from the bottom of the fixture to the top of the Transjack connector\* and add the system connector measurement for the selected system. Overall length differs according to the system connector selected.

	Basis	Cable Twin Rail	Liana	NS
System Connector Measurement	.38"	.63"	.94"	0"

### Monopoints

Overall length for a monopoint fixture is measured from bottom of the monopoint to the bottom of the fixture. (The monopoint canopy is measured separately.)

This measurement is equivalent to the distance from the bottom of the fixture to the top of the Transjack connector.\*



### Track system fixture example

To calculate the overall length for the Rotor fixture on a Liana track system, add 4.75" to 0.94. Overall length for a standard Rotor fixture on the Liana Track is 5.69". A Rotor fixture specified at 10" would have an overall length of 10.94" on Liana.

### Monopoint fixture example

Overall length for a standard Rotor fixture on a monopoint is 4.75". A Rotor fixture specified at 10" would have an overall length of 10" on a monopoint.

\* In the drawing above, the distance from the bottom of the fixture to the top of the Transjack connector equals 4.75". This represents the standard (ST) length for this fixture. ST measurements in the product ordering tables are approximate for

stem suspended fixtures and do not represent exact overall length. For exact ST measurements for stem suspended fixtures, reference the specification drawings.



Philips Lightolier  
e: [lol.webmaster@philips.com](mailto:lol.webmaster@philips.com)  
t: (508) 679-8131  
w: [www.lightolier.com](http://www.lightolier.com)

MIG May 15, 2012

Specifications are subject to change without notice.  
© Koninklijke Philips Electronics N.V., 2012. All rights reserved.