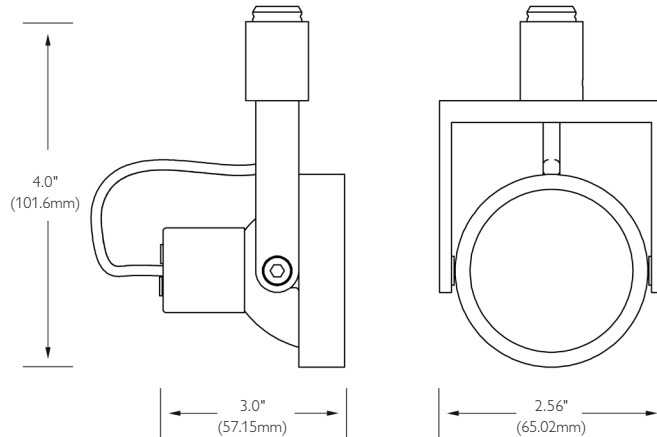
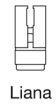
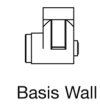
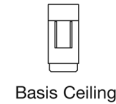
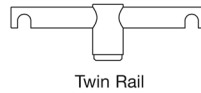
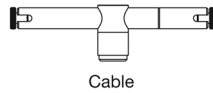


## Translite Systems, Micro Spot R

Page 1 of 3

### System Options



\*Fixture terminates to track system or monopoint with Transjack connector. Fixtures ordered with system code include Transjack connector for that system. Order fixture with "NS" code when using a monopoint.

### Ordering Information

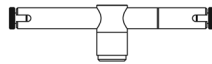
Fixture	System	Overall Length	Optional Lamping	Metal Finish
<b>MIR - Micro Spot R</b>	<b>CA4</b> – Cable 4" <b>CA6</b> – Cable 6" <b>TR4</b> – Twin Rail 4" <b>TR6</b> – Twin Rail 6" <b>BTC</b> - Basis Ceiling <b>BTW</b> - Basis Wall (max. 16") <b>LT</b> - Liana <b>NS</b> - No System Connector*	<b>Stem:</b> <b>ST</b> - Standard 5" <b>6" - 72"</b> – Specify Length (in 6" increments)  (When ordering a non-standard length, use whole numbers only - no fractional inches.)	<b>27F</b> <b>Philips EnduraLED</b> 7 watt 2700K 24° flood  <b>30F</b> <b>Philips EnduraLED</b> 7 watt 3000K 24° flood	<b>AL</b> - Satin Aluminum <b>PN</b> - Polished Nickel <b>RB</b> - Rubbed Bronze* <b>GB</b> - Gloss Black <sup>1</sup> <b>WH</b> - White <sup>1</sup>  *(Rubbed Bronze is not available for Twin Rail) <sup>1</sup> (Gloss Black and White only available for BTC, BTW, and NS.)

Job Information	Type:
<b>Job Name:</b> <b>Cat. No.:</b>  <b>Notes:</b>	

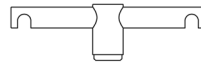
## Translite Systems, Micro Spot R

Page 2 of 3

## System Options



Cable



Twin Rail



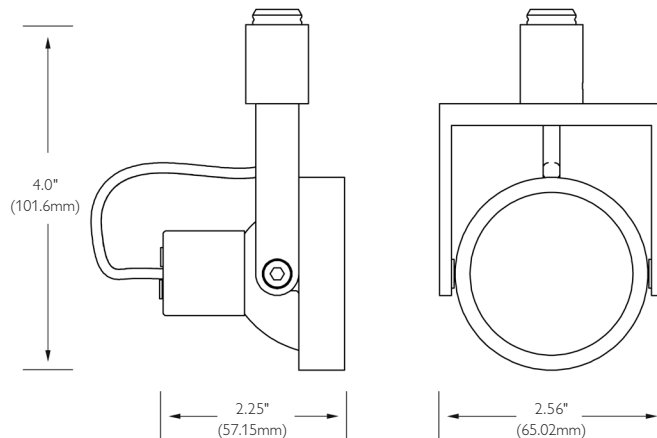
Basis Ceiling



Basis Wall



Liana



\*Fixture terminates to track system or monopoint with Transjack connector. Fixtures ordered with system code include Transjack connector for that system. Order fixture with "NS" code when using a monopoint.

## Features

- 1. Description:** Precision machined, adjustable luminaire. Round faced Gimbal.
- 2. System Options:** Micro Spot R is available for Cable 4" & 6", Twin Rail 4" and 6", Basis Ceiling Mount, Basis Wall Mount, Liana and low voltage monopoints.
- 3. Lamping:** MR16 50w max.
- 4. Electrical:** Transjack connector contacts utilize 24kt gold plated brass pin and sleeve connectors housed in aluminum.
- 5. Function:** Rotates 360 degrees and pivots 300 degrees. Overall length not field adjustable. Double accessory holder standard.
- 6. Net Weight:** .25lbs.

## Metal Finishes

- 1. Satin Aluminum**
- 2. Polished Nickel**
- 3. Rubbed Bronze** - finish is crafted with a solid brass substrate and buffed by hand to create an authentic rubbed bronze finish. Due to this hand-applied process, finish may vary.
- 4. Gloss Black**
- 5. White**

## Labels

UL and cUL listed for dry locations only.

## Accessories

Snoot, various glass lense louver, filter and backshield.

<b>Job Information</b>	<b>Type:</b>
------------------------	--------------

**PHILIPS**  
**LIGHTOLIER**

## Measuring Overall Length

### Track System Fixtures

Overall length for a track system fixture is measured from the bottom of the track to the bottom of the fixture.

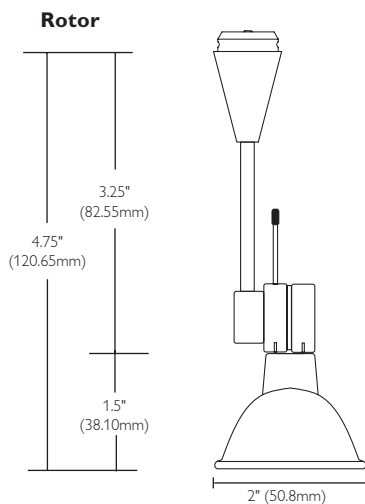
To calculate overall length, take the distance from the bottom of the fixture to the top of the Transjack connector\* and add the system connector measurement for the selected system. Overall length differs according to the system connector selected.

	Basis	Cable Twin Rail	Liana	NS
System Connector Measurement	.38"	.63"	.94"	0"

### Monopoints

Overall length for a monopoint fixture is measured from bottom of the monopoint to the bottom of the fixture.  
(The monopoint canopy is measured separately.)

This measurement is equivalent to the distance from the bottom of the fixture to the top of the Transjack connector.\*



### Track System Fixture Example

To calculate the overall length for the Rotor fixture on a Liana track system, add 4.75" to 0.94. Overall length for a standard Rotor fixture on the Liana Track is 5.69". A Rotor fixture specified at 10" would have an overall length of 10.94" on Liana.

### Monopoint Fixture Example

Overall length for a standard Rotor fixture on a monopoint is 4.75". A Rotor fixture specified at 10" would have an overall length of 10" on a monopoint.

\* In the drawing above, the distance from the bottom of the fixture to the top of the Transjack connector equals 4.75". This represents the standard (ST) length for this fixture. ST measurements in the product ordering tables are approximate for stem suspended fixtures and do not represent exact overall length. For exact ST measurements for stem suspended fixtures, reference the specification drawings.



Philips Lightolier  
e: [lol.webmaster@philips.com](mailto:lol.webmaster@philips.com)  
t: (508) 679-8131  
w: [www.lightolier.com](http://www.lightolier.com)

MIR November 15, 2011

Specifications are subject to change without notice.  
© Koninklijke Philips Electronics N.V., 2011. All rights reserved.

**Job Information** **Type:**