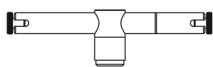


MNN1

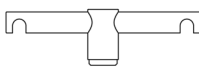
Translite Systems, Mini Norton

Page 1 of 3

System Options



Cable



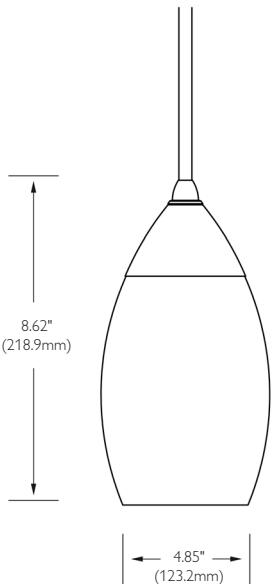
Twin Rail



Basis Ceiling



Liana



*Fixture terminates to track system or monopoint with Transjack connector. Fixtures ordered with system code include Transjack connector for that system. Order fixture with "NS" code when using a monopoint.

Ordering Information

Fixture	System	Overall Length	Diffuser Color	Metal Finish
MNN1 - Mini Norton, Cable Suspended	CA4 - Cable 4" CA6 - Cable 6" TR4 - Twin Rail 4" TR6 - Twin Rail 6" BTC - Basis Ceiling LT - Liana NS - No System Connector*	Cable: ST - Standard 72" 24" - 72" - Specify Length (in 12" increments) (When ordering a non-standard overall length, use whole numbers only - no fractional inches.)	TG - Turner Gold SW - Sausalito White GB - Gloss Black PW - Polar White	AL - Satin Aluminum PN - Polished Nickel RB - Rubbed Bronze GB - Gloss Black* WH - White* (*Gloss Black and White are only available for BTC, BTW and NS.)

Job Information Type:

Job Name:

Cat. No.:

Notes:

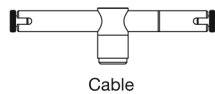
PHILIPS
LIGHTOLIER

MNN1

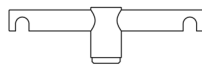
Translite Systems, Mini Norton

Page 2 of 3

System Options



Cable



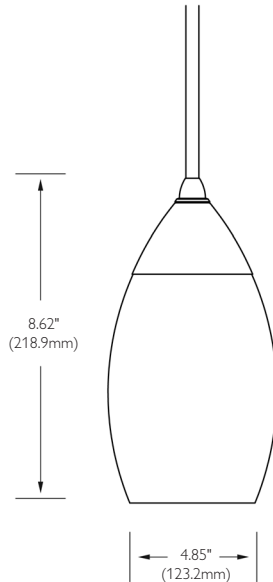
Twin Rail



Basis Ceiling



Liana



*Fixture terminates to track system or monopoint with Transjack connector. Fixtures ordered with system code include Transjack connector for that system. Order fixture with "NS" code when using a monopoint.

Features

- Description:** Multi layered hand-blown glass pendant with enamel white inner casing. Hand blown by artisans. Available in four captivating colors and four metal finishes.
- System Options:** Mini Norton is available for Cable 4" & 6", Twin Rail 4" and 6", Basis Ceiling Mount, Liana and low voltage monopoints.
- Lamping:** GY6.35 bi-pin 35w max. For use with open fixture rated lamp only.
- Electrical:** Transjack connector contacts utilize 24kt gold plated brass pin and sleeve connectors housed in aluminum.
- Function:** Suspended by field adjustable tin braided cable.
- Net glass weight:** 1.5 lbs.

Diffuser Colors

- Turner Gold
- Sausalito White
- Gloss Black
- Polar White

Metal Finishes

- Satin Aluminum
- Polished Nickel
- Rubbed Bronze – finish is crafted with solid brass substrate and buffed by hand to create an authentic rubbed bronze finish. Due to this hand-applied process, finish may vary.
- Gloss Black

Labels

ULand cUL listed for dry locations only.

Job Information	Type:
-----------------	-------

PHILIPS
LIGHTOLIER

Measuring Overall Length

Track System Fixtures

Overall length for a track system fixture is measured from the bottom of the track to the bottom of the fixture.

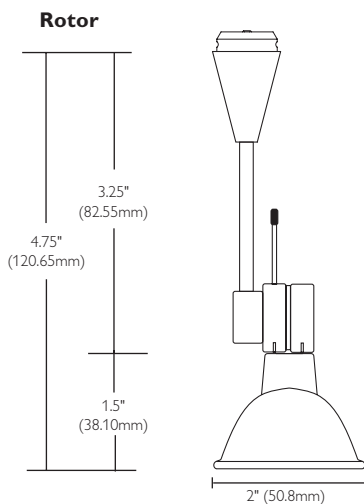
To calculate overall length, take the distance from the bottom of the fixture to the top of the Transjack connector* and add the system connector measurement for the selected system. Overall length differs according to the system connector selected.

	Basis	Cable Twin Rail	Liana	NS
System Connector Measurement	.38"	.63"	.94"	0"

Monopoints

Overall length for a monopoint fixture is measured from bottom of the monopoint to the bottom of the fixture.
(The monopoint canopy is measured separately.)

This measurement is equivalent to the distance from the bottom of the fixture to the top of the Transjack connector.*



Track System Fixture Example

To calculate the overall length for the Rotor fixture on a Liana track system, add 4.75" to 0.94. Overall length for a standard Rotor fixture on the Liana Track is 5.69". A Rotor fixture specified at 10" would have an overall length of 10.94" on Liana.

Monopoint Fixture Example

Overall length for a standard Rotor fixture on a monopoint is 4.75". A Rotor fixture specified at 10" would have an overall length of 10" on a monopoint.

* In the drawing above, the distance from the bottom of the fixture to the top of the Transjack connector equals 4.75". This represents the standard (ST) length for this fixture. ST measurements in the product ordering tables are approximate for stem suspended fixtures and do not represent exact overall length. For exact ST measurements for stem suspended fixtures, reference the specification drawings.



Philips Lightolier
e: lol.webmaster@philips.com
t: (508) 679-8131
w: www.lightolier.com

MNN1 November 15, 2011

Specifications are subject to change without notice.
© Koninklijke Philips Electronics N.V., 2011. All rights reserved.

Job Information **Type:**