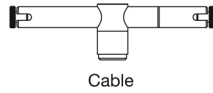


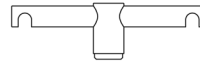
Translite Systems, Propulsion

Page 1 of 3

System Options



Cable



Twin Rail



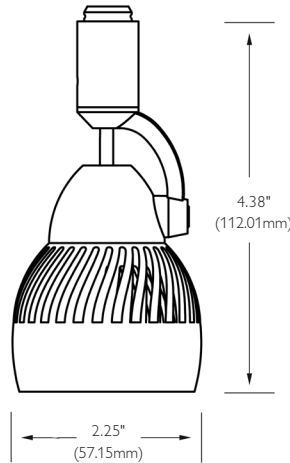
Basis Ceiling



Basis Wall



Liana



*Fixture terminates to track system or monopoint with Transjack connector. Fixtures ordered with system code include Transjack connector for that system. Order fixture with "NS" code when using a monopoint.

Ordering Information

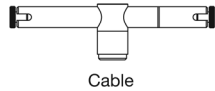
Fixture	System	Overall Length	Metal Finish
PRP - Propulsion	CA4 - Cable 4" CA6 - Cable 6" TR4 - Twin Rail 4" TR6 - Twin Rail 6" BTC - Basis Ceiling BTW - Basis Wall (max. 16") LT - Liana NS - No System Connector*	Stem: ST - Standard 5" 6" - 72" - Specify Length (in 6" increments) (When ordering non-standard overall length, use whole numbers only - no fractional inches.)	AL - Satin Aluminum PN - Polished Nickel GB - Gloss Black WH - White (Gloss Black and White are available for BTC, BTW and NS only.)

Job Information	Type:
Job Name: Cat. No.: Notes:	

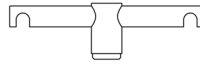
PRP Translite Systems, Propulsion

Page 2 of 3

System Options



Cable



Twin Rail



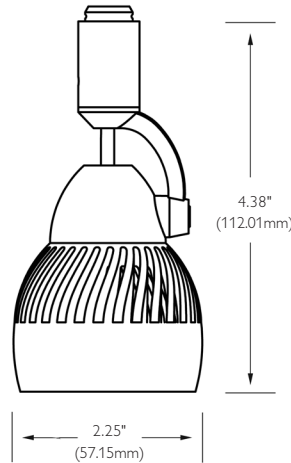
Basis Ceiling



Basis Wall



Liana



*Fixture terminates to track system or monopoint with Transjack connector. Fixtures ordered with system code include Transjack connector for that system. Order fixture with "NS" code when using a monopoint.

Features

- 1. Description:** Precision machined, louvered, adjustable luminaire. Accepts up to two accessories standard.
- 2. System Options:** Propulsion is available for Cable 4" & 6", Twin Rail 4" and 6", Basis Ceiling Mount, Basis Wall Mount, Liana and low voltage monopoints.
- 3. Lamping:** MR16 50w max.
- 4. Electrical:** Transjack connector contacts utilize 24kt gold plated brass pin and sleeve connectors housed in aluminum.
- 5. Function:** Rotates 360 degrees and pivots 140 degrees. Overall length not field adjustable.
- 6. Net weight:** .5 lbs.

Accessories

Snoot, glass lens, louver and filter.

Metal Finishes

1. Satin Aluminum
2. Polished Nickel
3. Gloss Black
4. White

Labels

UL and cUL listed for dry locations only.

Job Information	Type:
-----------------	-------

PHILIPS
LIGHTOLIER

Measuring Overall Length

Track System Fixtures

Overall length for a track system fixture is measured from the bottom of the track to the bottom of the fixture.

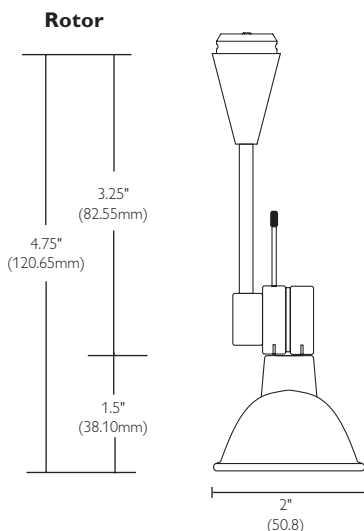
To calculate overall length, take the distance from the bottom of the fixture to the top of the Transjack connector* and add the system connector measurement for the selected system. Overall length differs according to the system connector selected.

	Basis	Cable Twin Rail	Liana	NS
System Connector Measurement	.38"	.63"	.94"	0"

Monopoints

Overall length for a monopoint fixture is measured from bottom of the monopoint to the bottom of the fixture.
(The monopoint canopy is measured separately.)

This measurement is equivalent to the distance from the bottom of the fixture to the top of the Transjack connector.*



Track System Fixture Example

To calculate the overall length for the Rotor fixture on a Liana track system, add 4.75" to 0.94. Overall length for a standard Rotor fixture on the Liana Track is 5.69". A Rotor fixture specified at 10" would have an overall length of 10.94" on Liana.

Monopoint Fixture Example

Overall length for a standard Rotor fixture on a monopoint is 4.75". A Rotor fixture specified at 10" would have an overall length of 10" on a monopoint.

* In the drawing above, the distance from the bottom of the fixture to the top of the Transjack connector equals 4.75". This represents the standard (ST) length for this fixture. ST measurements in the product ordering tables are approximate for stem suspended fixtures and do not represent exact overall length. For exact ST measurements for stem suspended fixtures, reference the specification drawings.



Philips Lightolier
e: lol.webmaster@philips.com
t: (508) 679-8131
w: www.lightolier.com

PRP November 15, 2011

Specifications are subject to change without notice.
© Koninklijke Philips Electronics N.V., 2011. All rights reserved.

Job Information Type: