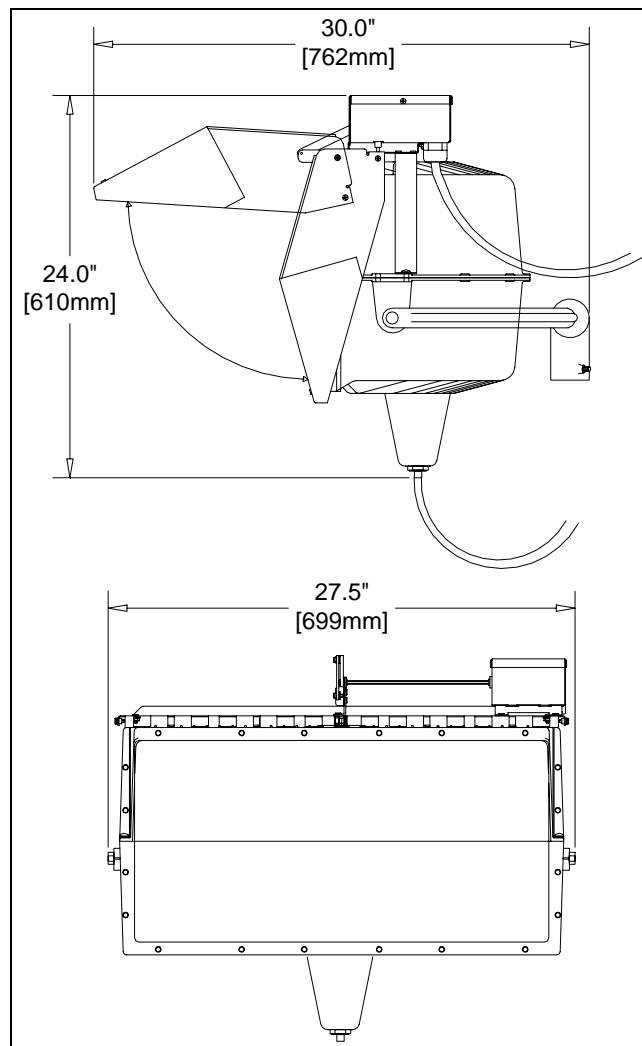


CSA / cUL Approved for Damp Locations  
1000W Metal Halide

## SPECIFICATIONS:

- Housing is constructed of die-cast aluminum with integral cast heat dissipating fins and a built-in aiming device. All service hardware & fasteners are stainless steel. Standard finish is Duraplex II™ Black Electrostatic Powder coat.
- Sealed optical chamber; heat and impact resistant tempered glass lens; aluminum lens frame and extruded gasket, secured to the main housing using stainless steel screws.
- High purity anodized specular or diffused reflector material. Main individual reflector segments held in place by single slots running along different track assemblies producing narrow, medium or wide distribution patterns.
- Porcelain, 4 kV pulse rated, grip-type Mogul based socket prevents lamp loosening. 'Stabilux' lamp support to ensure lamp alignment and protect from breakage.
- Lamp socket is prewired with a 10ft. 16/3 SO cord and modular 3-wire plug. Shutter control motor is prewired with a 10ft. 16/5 SO cord and modular 5-wire plug. Ballast secondary is prewired with modular receptacles to accept plugs from fixture socket and shutter control wiring. Primary side of ballast is factory prewired with 6ft. 16/5 SO cord and L2320P 5-wire plug.
- SilentGuard High Power Factor Ballast is remote mounted from the fixture-head and is enclosed in an extruded aluminum housing to prevent noise from magnetism between ballast core and outer housing. Ballast is CWA-type capable of operating 1000W Metal Halide lamp. Ballast starting
- Motorized Shield designed for indoor sports lighting for applications requiring flexibility of on/off control without the use of instant re-strike starters. Top shield closes over face of floodlight blocking 100% of forward light. When the shield is closed, the lamp is idled at low light intensity using Wide-Lite's HiLo control system to ensure low operating temperature of the lamp and fixture.
- Cast aluminum mastfitter (MF-1) for fixture shall provide slip fitter for 2 3/8" (68mm) O.D. vertical pipe tenon. Remote ballast to be adaptable for wall, platform or rack mounting.
- Comes with 7 year limited warranty.



## ORDERING GUIDE:

Example: **FEM1000D-6LQ**

				-	
--	--	--	--	---	--

Series	Light Source	Lamp Wattage	Reflector Type	Voltage	Options
FE : F Eclipse Series	M : Metal Halide	1000 : 1000W	B D	1 : 120V 4 : 277V 6 : 347V	LQ : Auxiliary Quartz Socket & Relay F1 : Single Line Fusing (120,277,347V Only) HL : HiLo Dimming HM : Hi Medium Dimming PNT : Special Colour Finish <sup>1</sup>

<sup>1</sup> For other housing finishes, consult factory for available colours & colour codes.

PROJECT: \_\_\_\_\_

TYPE: \_\_\_\_\_

CATALOGUE NUMBER: \_\_\_\_\_