

A2 1000 Series

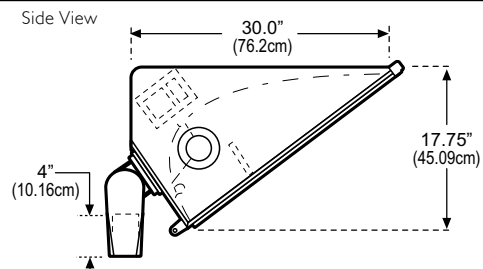
Akra II Cutoff Floodlight, 1000W HID

Type:	Job:	Approvals:	
Catalog Number:			
Series/Source-Wattage	Distribution	Voltage	Mounting
Options (Factory Installed)		Finish	Accessories (Field Installed)
		Date: Page 1 of 6	

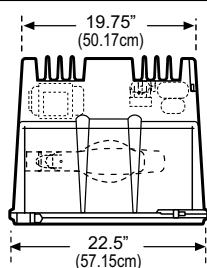
Overall Dimensions

For Reference Only

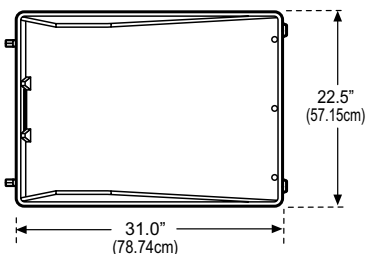
Mastfitter Mount (M)



End View

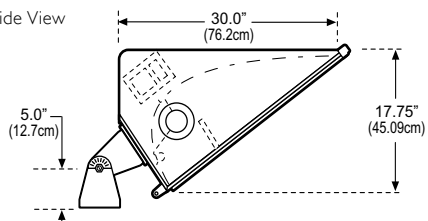


Lens



Yoke Mount (Y)

Side View



Bottom View - Yoke Mount, see page 5 for details.

Weight

96 lbs (43.54 kgs)

EPA data shown on page 3.

Specifications

Housing

The Akra II 1000 floodlight features a cast aluminum alloy housing with integral heat dissipating fins and heavy-duty hinges. Standard unit constructed to IP54.

Distribution

Akra reflector system. High purity anodized aluminum reflectors assure maximum efficiency. A secondary internal reflector element reflects high angle rays back into the beam to achieve high beam utilization. Meets IES definition of cutoff distribution.

Lamp Access

Hinged lens frame allows convenient lamp access.

Lens

Clear tempered glass lens is secured to cast aluminum door frame by 10 retaining clips and sealed with a gasket.

Socket

Pre-wired grip-type mogul base socket, 4KV rated for MH, 5KV for HPS. Glass end of the lamp is held in precise photometric alignment and protected from breakage by a Stabilux socket.

Ballast

High power factor ballast with reliable starting down to -29°C (-20°F) for Metal Halide lamps, -34°C (-30°F) for Pulse Start Metal Halide lamps, and -40°C (-40°F) for High Pressure Sodium. Ballast has Class H, 180°C (356°F) rated insulation. Crest factor does not exceed 1.8. Capacitor and HPS ignitor are separated from the ballast core and coil to maximize life by minimizing heat.

Aiming

Cutoff distribution achieved at 62.5° (2 times mounting height). Aiming above 63° provides semi-cutoff and non-cutoff distribution.

Mounting

Fixture may be specified with a cast aluminum mastfitter, suitable for mounting to a 2-3/8" O.D. vertical tenon; or formed plate steel yoke. Yoke mount allows mounting directly to any flat surface.

Finish

Standard finish shall be dark bronze UltraClad polyester powder coating, 2.5 mil nominal thickness, electrostatically applied and oven cured. All components shall be thoroughly cleaned by a 5 stage pre-treatment process including iron phosphate bath and non-chromic acid etching stages, ensuring optimum performance characteristics. Other colors may be specified.

Listings

ETL/cETL listed to the UL 1598 standard, suitable for Wet Locations. The quality systems of this facility have been registered by UL to the ISO 9001 Series Standards.

Warranty / Terms and Conditions

5 year limited warranty. See philips.com/warranties for complete details and exclusions.



Some luminaires use fluorescent or high intensity discharge (HID) lamps that contain small amounts of mercury. Such lamps are labeled 'Contain Mercury' and/or with the symbol 'Hg'. Lamps that contain mercury must be disposed of in accordance with local requirements. Information regarding lamp recycle and disposal can be found at www.lamprecycle.org.

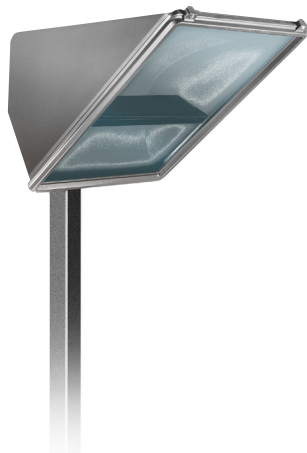
PHILIPS



A2 1000 Series

Akra II Cutoff Floodlight, 1000W HID

Type:	Job:	Page 2 of 6
-------	------	-------------



Series/Source-Wattage	Distribution	Voltage	Mounting
Metal Halide <input type="checkbox"/> A2M-1000 Pulse Start <input type="checkbox"/> A2P-1000 ⁽¹⁾ High Pressure Sodium <input type="checkbox"/> A2S-1000	<input type="checkbox"/> A <input type="checkbox"/> C <input type="checkbox"/> D	<input type="checkbox"/> 120 <input type="checkbox"/> 208 <input type="checkbox"/> 240 <input type="checkbox"/> 277 <input type="checkbox"/> 347 <input type="checkbox"/> 480 <input type="checkbox"/> QV ⁽²⁾	<input type="checkbox"/> M Mastfitter Mount (Standard) <input type="checkbox"/> Y Yoke Mount

(1) For acceptable performance, note position orientation specific nature of Pulse Start lamps. Consult factory.

(2) Allows field selection of 120/208/240/277 voltage. (No 480V). Certain options may require voltage selection as well.

Options (Factory Installed)	Finish	Accessories (Ordered Separately)
<div><input type="checkbox"/> BL Bi-Level dimming</div> <div><input type="checkbox"/> CSR Hot Quartz Restrike</div> <div><input type="checkbox"/> LQ Hot/Cold Quartz Restrike</div> <div><input type="checkbox"/> LQ1 Separately Wired (120V) Quartz Restrike</div> <div><input type="checkbox"/> F1 Single Fuse (120/277V)</div> <div><input type="checkbox"/> F2 Double Fuse (208/240/480V)</div> <div><input type="checkbox"/> TLR Twist Lock Receptacle (photocell by others)</div> <div><input type="checkbox"/> 50HZ 50 Hz ballast operation</div>	<div><input type="checkbox"/> TDB Textured Dark Bronze</div> <div><input type="checkbox"/> TGR Textured Gray</div> <div><input type="checkbox"/> TBK Textured Black</div> <div><input type="checkbox"/> TWHT Textured White</div> <div><input type="checkbox"/> TSA Textured Satin Aluminum</div> <div><input type="checkbox"/> TGN Textured Green</div> <div><input type="checkbox"/> RAL(*) Special Tiger Drylac powdercoat finish <i>(*) = specify color</i></div> <div style="margin-top: 20px;">(*) Specify RAL color number from RAL color chart. Consult factory for assistance in color selection.</div>	<div><input type="checkbox"/> F1-KIT Single Fuse Kit (120/277/347V)</div> <div><input type="checkbox"/> F2-KIT Double Fuse Kit (208/240/480V)</div> <div><input type="checkbox"/> PX-1-TL Heavy-Duty Cross Arm bracket with 2-3/8" pipe stub, Galvanized finish</div> <div><input type="checkbox"/> FB-1-TL Heavy-Duty Flat Base mount, Galvanized finish</div> <div><input type="checkbox"/> AL-10-A2 Auxiliary Polymer Lens</div> <div><input type="checkbox"/> A2-AIM A2 Aiming Device</div> <div><input type="checkbox"/> WB-1 Wall bracket for mounting to flat vertical surface (bullhorn)</div> <div><input type="checkbox"/> WB-5 Surface Mounted Wiring box</div> <div><input type="checkbox"/> PM-1-HD Heavy-Duty Wood pole mounting kit for single fixture with one U-arm</div> <div><input type="checkbox"/> PM-2-HD Heavy-Duty Wood pole mounting kit for two fixtures with two U-arms</div> <div><input type="checkbox"/> PM-3-HD Heavy-Duty Wood pole mounting kit for three fixtures with three U-arms</div> <div><input type="checkbox"/> PM-4-HD Heavy-Duty Wood pole mounting kit for four fixtures with four U-arms</div>

Akra II Cutoff Floodlight, 1000W HID

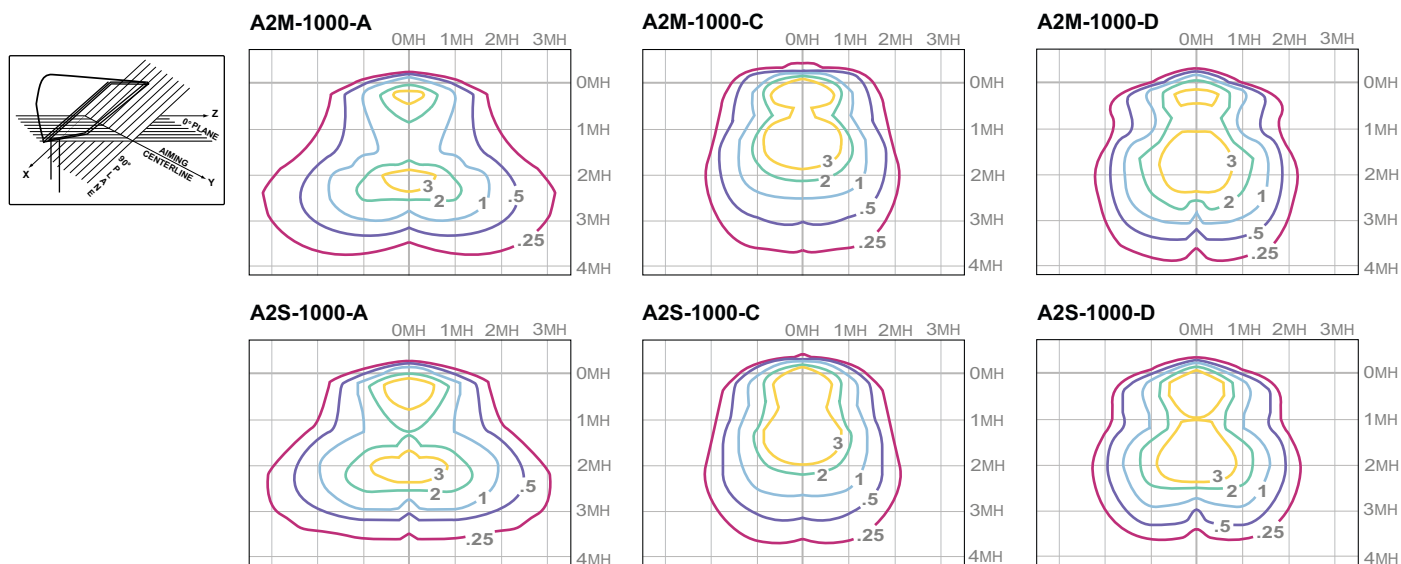
Type:	Job:	Page 3 of 6
-------	------	-------------

Distribution Guide & Ballast Data¹

Source Type ⁽²⁾	Catalog Number	Reflector Type	Lamp ⁽³⁾ Envelope	Field Angle Based on 10%	Beam Angle Based on 50%	.ies File Name	Ballast Type ⁽⁴⁾	ANSI Code	Line Current 120 / 208 / 240 / 277 / 480	Line Watts
MH	A2M-1000	A	BT37	129H x 22V	75H x 8V	a2m100a.ies	CWA	M47 / H36	9.2 / 5.6 / 4.7 / 4.1 / 2.4	1080
	A2M-1000	C	BT37	103H x 90V	62H x 27V	a2m100c.ies	CWA	M47 / H36	9.2 / 5.6 / 4.7 / 4.1 / 2.4	1080
	A2M-1000	D	BT37	80H x 28V	53H x 14V	a2m100d.ies	CWA	M47 / H36	9.2 / 5.6 / 4.7 / 4.1 / 2.4	1080
PS	A2P-1000	A	BT37	129H x22V	75H x 8V	a2p100a.ies	CWA	M141	9.0 / 5.2 / 4.5 / 3.9 / 2.4	1080
	A2P-1000	C	BT37	103H x 90V	62H x 27V	a2p100c.ies	CWA	M141	9.0 / 5.2 / 4.5 / 3.9 / 2.4	1080
	A2P-1000	D	BT37	80H x 28V	53H x 14V	a2p100d.ies	CWA	M141	9.0 / 5.2 / 4.5 / 3.9 / 2.4	1080
HPS	A2S-1000	A	E25	117H x 20V	62H x 7V	a2s100a.ies	CWA	S52	9.5 / 5.5 / 4.8 / 4.2 / 2.5	1100
	A2S-1000	C	E25	100H x 89V	60H x 28V	a2s100c.ies	CWA	S52	9.5 / 5.5 / 4.8 / 4.2 / 2.5	1100
	A2S-1000	D	E25	90H x 72V	63H x 14V	a2s100d.ies	CWA	S52	9.5 / 5.5 / 4.8 / 4.2 / 2.5	1100

- (1) The Aktra II 1000 accommodates a variety of other wattages and lamps. Consult factory.
- (2) MH = Metal Halide, PS = Pulse Start Metal Halide, HPS = High Pressure Sodium.
- (3) Horizontal clear lamps recommended for optimum photometric performance.
- (4) CWA = Constant Wattage Autotransformer.

Distribution Patterns *Photometric data calculated at 50' mounting height.*



EPA

Effective Projected Area in Ft²

3.4

A2 1000 Series

Akra II Cutoff Floodlight, 1000W HID

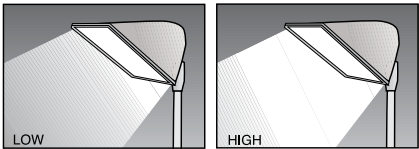
Type:	Job:	Page 4 of 6
-------	------	-------------

Option details (Factory Installed)

BL = Bi-Level

Note: Suitable for HPS in any aiming position. Consult factory when specifying dimming with Metal Halide.

Bi-Level provides high/low level of lamp output with 50% power consumption. Zero crossover network avoids strobing and lamp dropout.



CSR = Hot Quartz Restrike

CSR - Quartz restrike using a current sensing relay; extinguishes auxiliary lamp when main arc strikes.

LQ = Hot/Cold Quartz Restrike

LQ - Provides LiteMatic operation for fixtures with 120V or multi-tap ballasts.

LQ1 = Separately Wired (120V) Quartz Restrike

Note: Standard 150 watt (120V) double contact bayonet base socket. Combined Quartz wattage may not exceed HID lamp wattage.

LQ1 requires an Interlock (by others) to ensure HID and Quartz source are not operated at once.

LQ1 - Separately wired, externally controlled emergency lighting from a separate power source.

LiteMatic Operation



Normal Start: Main and Quartz lamps both energized.



Main Lamp Reaches Approximately 40% of Rated Output: Quartz lamp automatically extinguishes (combined lamp currents never exceed that of main lamp at 100% output).



When Arc Extinguished: Auxiliary quartz lamp automatically energized when power is restored.



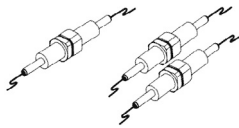
Main Lamp Reaches 40% of Rated Output: Quartz lamp automatically extinguishes

F1 = Single Fuse (120V/277V)

Consists of 1 or 2 fuse holders and 1 or 2 KTK 30 amp fuses.

F2 = Double Fuse (208V/240V/480V)

Note: If ordering QV ballast, voltage must be specified.



TLR = Photocontrol Receptacle

Photocontrol twistlock receptacle only (Photocontrol by others).

50 HZ = 50 Hz Ballast Operation
(Consult Factory)

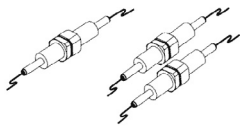
Specified for applications (outside the United States) where 50 Hertz operation is standard.

Accessory details (Field Installed - Shipped Separately)

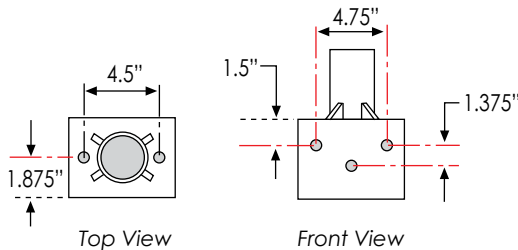
F1 Kit = Single Fuse Kit (120V/277V)

Consists of 1 or 2 fuse holders and 1 or 2 KTK 30 amp fuses.

F2 Kit = Double Fuse Kit (208V/240V/480V)



PX-1-TL = Heavy duty Cross-arm Bracket

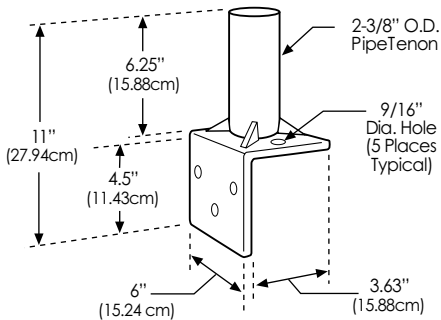


Steel angle bracket with 2" pipe stub. Four gussets provide additional mounting stability.

"L" base.

Hot dipped galvanized.

For installing floodlights on wooden or steel cross-arms.



A2 1000 Series

Akra II Cutoff Floodlight, 1000W HID

Type:	Job:	Page 5 of 6
-------	------	-------------

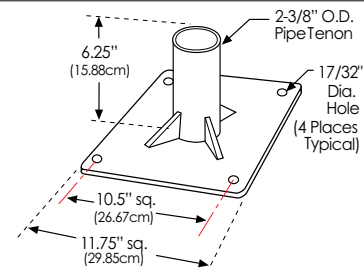
Accessory details continued (Field Installed - Shipped Separately)

FB-1-TL = Flat Base Mount

Steel construction, with 2" pipe stub and four gussets for heavy-duty support.

Hot dipped galvanized.

For installing floodlight to flat horizontal surfaces.

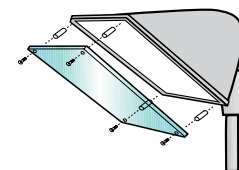


AL-10-A2 = Auxiliary Polymer Lens

Provides additional protection of the glass lens. Useful life is limited by UV discoloration from sunlight, mercury or metal halide lamps.

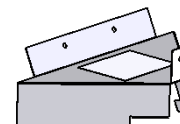
Auxiliary lens for Aktra II Series floodlights.

1/4" thick impact-resistant polymer lens, furnished with mounting hardware and standoffs.



A2-AIM = A2 Aiming Device

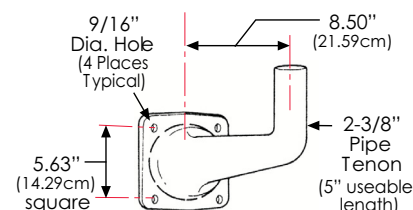
Aiming device can be sighted from either side of the fixture. See Installation Instructions for details.



WB-1 = Wall Bracket (Bullhorn)

Cast aluminum wall bracket for vertical surfaces only. Designed to permit mounting of floodlights on flat vertical surfaces.

Use in conjunction with WB-5 for surface mounted wiring.

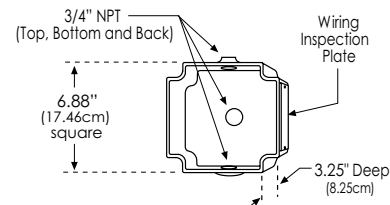


WB-5 = Surface Mounted Wiring Box

Used in conjunction with WB-1 for surface conduit feed. Tapped top, back and bottom for 3/4" pipe or conduit.

Cast aluminum wall bracket for vertical surfaces only. Designed to permit mounting of floodlights on flat vertical surfaces.

Use in conjunction with WB-5 for surface mounted wiring.



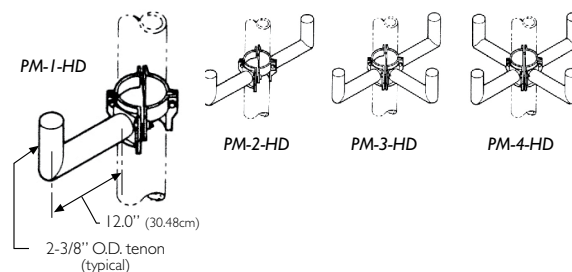
Galvanized steel heavy-duty wood pole mounting kits are suitable for mounting up to four luminaires with mastfitters to 6.0"-12.0" O.D. wood poles. Shipped as components for field assembly.

PM-1-HD Heavy-duty wood pole mounting kit for single luminaire, with 1 U-arm shipping weight: 15 lbs (6.80 kgs)

PM-2-HD Heavy-duty wood pole mounting kit for two luminaires, with 2 U-arms shipping weight: 20 lbs (9.07 kgs)

PM-3-HD Heavy-duty wood pole mounting kit for three luminaires, with 3 U-arms shipping weight: 26 lbs (11.79 kgs)

PM-4-HD Heavy-duty wood pole mounting kit for four luminaires, with 4 U-arms shipping weight: 31 lbs (14.06 kgs)

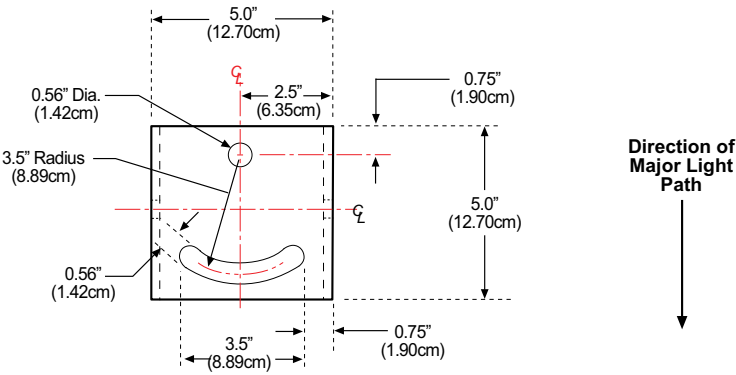


A2 1000 Series

Akra II Cutoff Floodlight, 1000W HID

Type:	Job:	Page 6 of 6
-------	------	-------------

Yoke Mount detail
Bottom View



Notes



© 2015 Koninklijke Philips N.V. All rights reserved.
Philips reserves the right to make changes in specifications and/or to discontinue any product at any time without notice or obligation and will not be liable for any consequences resulting from the use of this publication.
philips.com/luminaires



Philips Lighting, North America Corporation
200 Franklin Square Drive, Somerset, NJ 08873
Tel. 855-486-2216

Philips Lighting Canada Ltd.
281 Hillmount Rd, Markham, ON, Canada L6C 2S3
Tel. 800-668-9008