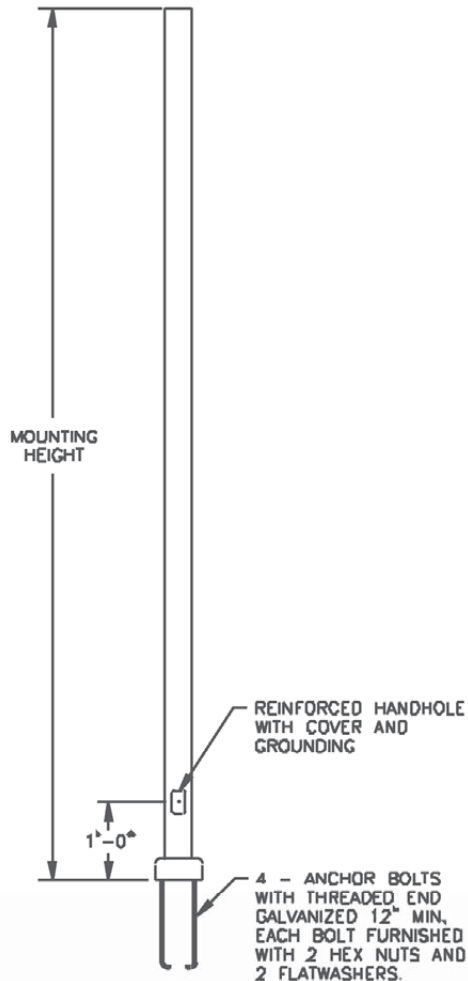


Pole-RSP Series

Round Straight Steel Pole

Type:	Job:					Approvals:
Catalog Number:						
- - - - - BC						
Series (pole type and height)	Base O.D.	Gauge (wall thickness)	Finish	Mounting Designation (arm or tenon mounting configuration)	Base Cover (standard)	



Round Straight Steel Pole (RSP)

See below for ordering example to specify a 25' Round Straight Steel Pole, having a 5.00" O.D. shaft dimension, 0.180" wall thickness, Dark Bronze powder coat Finish, with an optional 2-3/8" O.D. x 4" tall pole top tenon, and the standard base cover.

RSP25-5-18-DB-T2-BC

25	Nominal Mounting Height (in Feet)
5	Base O.D. (in Inches)
18	0.180" Wall Thickness
DB	Dark Bronze (Powder Coat Finish)
T2	2-3/8" O.D. x 4" tall Pole Top Tenon (Option)
BC	Base Cover (standard feature)

Specifications

Anchor Bolts

Anchor bolts are fabricated from carbon steel conforming to AASHTO M314 Grade-55 or ASTM F1554 Grade-55. Bolts have an "L" bend on one end and are galvanized a minimum of 12 inches on the threaded end. Four anchor bolts are provided per pole. Each anchor bolt is furnished with two hex nuts and two flat washers.

Anchor Base

The anchor base (base plate) is fabricated from structural quality hot rolled carbon steel plate conforming to ASTM A36. The base plate telescopes the pole shaft and is circumferentially welded top and bottom. The base is provided with bolt slots to accommodate a bolt circle range from 7" to 9". See Pole Base and Bolt Circle Detail.

Pole Shaft

The pole shaft is fabricated from hot rolled welded steel tubing of one-piece construction with a full length longitudinal high frequency electric resistance weld. The shaft cross section is round with no taper. Shaft material shall have a minimum yield strength of 42,000 psi.

Handhole

The reinforcing handhole rim consists of a nominal 2.5" x 5" rectangular shaped tubing material. The handhole is provided with a steel attachment bar, steel cover, and one round head zinc plated machine screw. The handhole is welded in the pole shaft and is located 1'-0" above the base.

Electrical Ground

A nut holder is provided near the handhole and includes a 0.5"-13 UNC hex head bolt and nut.

Full Base Cover

A full base cover is standard and is fabricated from ABS plastic. It is a two-piece cover secured together with two fasteners.

Pole Top Cap and Arm Mounting

A removeable top cap is standard and is used in conjunction with drilled pole shafts for accommodation of a direct mounted luminaire arm attachment. Specify choice of drill mounting (D1 through D6) for luminaire arm mounting configuration required. Specify appropriate Drill Template (Y) for intended luminaire mounting type.

Pole Top Tenon

Optional pole top tenons may be specified and are fabricated from structural quality hot rolled carbon steel with a guaranteed minimum yield strength of 30,000 psi. A pole top plate and tenon of weldable grade hot rolled commercial quality carbon steel is circumferentially welded to the top of the pole shaft. This plate provides an internal weather resistant wiring raceway into the pole top tenon. Standard tenon sizes are 2-3/8" O.D. x 4" tall (T2), 3.0" O.D. x 5-5/8" tall (T3), or 4" O.D. x 5-5/8" tall (T4) vertical pipe tenon. Bullhorn accessories are available.

Finish

Standard available finishes are hot-dip galvanized (GV) and polyester powder coat, electrostatically applied and oven cured, in the colors listed.

Fastening Hardware

All structural fasteners are galvanized high strength carbon steel. All other fasteners are galvanized or zinc plated carbon steel or stainless steel.

Design

Consult Wind Velocity Map to ensure suitability for location and application.

Standards (poles) are designed to withstand dead loads and theoretical dynamic loads developed by variable wind speeds, as charted, with an appropriate gust factor under the following conditions:

Wind velocities are based on 10 mph increments from 80 mph through 100 mph.

Note: Standards (poles) to be located in areas of known abnormal conditions require special consideration. For example: coastal areas, airports, and areas of special winds such as the Chinook Winds along the eastern slope of the Rocky Mountains.

Standards (poles) are designed for ground mounted applications. Consult factory for special consideration for mounting on structures (such as bridges and buildings). Height correction factors and drag coefficients are applied to the entire structure. An appropriate safety factor is maintained based on the minimum yield strength of the material incorporated into the standard.

Pole-RSP Series

Round Straight Steel Pole

Type:	Job:	Page 2 of 4
-------	------	-------------

Series/Pole Height ⁽¹⁾	Base ⁽²⁾	Wall Thickness ⁽³⁾	Finish	Mounting Designation Options
<input type="checkbox"/> RSP10 10' pole <input type="checkbox"/> RSP12 12' pole <input type="checkbox"/> RSP14 14' pole <input type="checkbox"/> RSP16 16' pole <input type="checkbox"/> RSP18 18' pole <input type="checkbox"/> RSP20 20' pole <input type="checkbox"/> RSP25 25' pole <input type="checkbox"/> RSP30 30' pole	<input type="checkbox"/> 3 <input type="checkbox"/> 4 <input type="checkbox"/> 4.5 <input type="checkbox"/> 5	<input type="checkbox"/> 12 0.125" <input type="checkbox"/> 18 0.180"	<input type="checkbox"/> GV Galvanize <input type="checkbox"/> GR ⁽⁴⁾ Gray <input type="checkbox"/> SA ⁽⁴⁾ Satin Aluminum <input type="checkbox"/> DB ⁽⁴⁾ Dark Bronze <input type="checkbox"/> BLK ⁽⁴⁾ Black <input type="checkbox"/> WHT ⁽⁴⁾ White	Arm Mount Configurations ⁽⁵⁾ <input type="checkbox"/> D1-DT(Y) 1 @ 90°, specify drill template (Y) <input type="checkbox"/> D2-DT(Y) 2 @ 180°, specify drill template (Y) <input type="checkbox"/> D3-DT(Y) 3 @ 120°, specify drill template (Y) <input type="checkbox"/> D4-DT(Y) 4 @ 90°, specify drill template (Y) <input type="checkbox"/> D5-DT(Y) 2 @ 90°, specify drill template (Y) <input type="checkbox"/> D6-DT(Y) 3 @ 90°, specify drill template (Y) Tenon Mount Configurations ⁽⁶⁾ <input type="checkbox"/> T2 2.375" (2-3/8") O.D. x 4.0" tall tenon ⁽⁷⁾ <input type="checkbox"/> T3 3.0" O.D. x 5.625" (5-5/8") tall tenon <input type="checkbox"/> T4 4.0" O.D. x 5.625" (5-5/8") tall tenon

(1) Round Straight Steel Pole Series. Consult Pole Information Chart for corresponding available pole O.D. and wall thickness.

(2) In inches. See chart for availability with desired pole height.

(3) See chart for availability with desired pole height.

(4) Powder coat finish. Consult factory for special colors or finishes.

(5) Drill Mounting patterns for Round Pole. Specify appropriate Drill Template (Y) for intended luminaire to be arm mounted.

(6) T2 suitable for use with all poles.

T3 suitable for poles with pole top O.D. of 4" or more.

T4 suitable for use with 6" pole top O.D. only. Standard pole top pipe tenon options listed. Consult factory to specify custom size.

(7) 4-1/2" tall tenon available as special order. Consult factory when specifying with PTRD or PTSQ (EAL post top mounting options).

Pole Information Chart ^(1, 2, 3, 4, 5)

Nominal Mounting Height (ft)	Pole Shaft				80 MPH w/1.3 Gust		90 MPH w/1.3 Gust		100 MPH w/1.3 Gust	
	Catalog Number	Pole O.D. (in)	Wall Thk. (in)	Structure Wt. (lbs)	Max EPA (ft²)	Max Wt. (lbs)	Max. EPA (ft²)	Max. Wt. (lbs)	Max. EPA (ft²)	Max. Wt. (lbs)
10	RSP10- 3 -12-XXX-XX-BC	3.00	0.120	55	10.00	250	7.70	190	6.00	175
	RSP10- 4 -12-XXX-XX-BC	4.00	0.120	70	19.10	480	15.00	375	12.20	305
	RSP10- 4.5 -12-XXX-XX-BC	4.50	0.120	75	24.50	615	19.50	490	15.80	395
12	RSP12- 3 -12-XXX-XX-BC	3.00	0.120	60	7.70	195	5.80	145	4.40	130
	RSP12- 4 -12-XXX-XX-BC	4.00	0.120	80	15.00	390	11.80	300	9.50	240
	RSP12- 4.5 -12-XXX-XX-BC	4.50	0.120	85	19.80	495	15.70	395	12.70	320
14	RSP14- 3 -12-XXX-XX-BC	3.00	0.120	70	6.00	175	4.40	130	3.30	90
	RSP14- 4 -12-XXX-XX-BC	4.00	0.120	90	12.20	305	9.40	250	7.60	195
	RSP14- 4.5 -12-XXX-XX-BC	4.50	0.120	95	16.20	405	12.80	320	10.30	260
16	RSP16- 3 -12-XXX-XX-BC	3.00	0.120	80	4.60	125	3.20	100	2.30	60
	RSP16- 4 -12-XXX-XX-BC	4.00	0.120	100	9.60	250	7.40	185	5.90	150
	RSP16- 4.5 -12-XXX-XX-BC	4.50	0.120	105	13.10	330	10.20	265	8.20	205
18	RSP18- 3 -12-XXX-XX-BC	3.00	0.120	90	3.40	90	2.30	60	1.40	70
	RSP18- 4 -12-XXX-XX-BC	4.00	0.120	110	7.60	190	5.70	180	4.50	130
	RSP18- 4.5 -12-XXX-XX-BC	4.50	0.120	115	10.50	265	8.20	210	6.50	165
20	RSP20- 3 -12-XXX-XX-BC	3.00	0.120	100	2.40	100	1.40	75	NA	NA
	RSP20- 4 -12-XXX-XX-BC	4.00	0.120	120	6.00	150	4.45	150	3.45	125
	RSP20- 4.5 -12-XXX-XX-BC	4.50	0.120	130	8.50	215	6.60	165	5.20	130
	RSP20- 5 -12-XXX-XX-BC	5.00	0.120	145	11.75	300	9.10	230	7.25	180
25	RSP25- 4 -12-XXX-XX-BC	4.00	0.120	145	2.85	100	1.95	75	1.35	75
	RSP25- 4.5 -12-XXX-XX-BC	4.50	0.120	155	4.80	130	3.60	90	2.70	90
	RSP25- 5 -12-XXX-XX-BC	5.00	0.120	180	7.25	180	5.50	150	4.25	150
	RSP25- 5 -18-XXX-XX-BC	5.00	0.180	260	12.10	300	9.40	250	7.45	200
30	RSP30- 4.5 -12-XXX-XX-BC	4.50	0.120	185	2.30	80	1.50	75	1.00	60
	RSP30- 5 -12-XXX-XX-BC	5.00	0.120	210	4.20	150	3.00	125	2.25	100
	RSP30- 5 -18-XXX-XX-BC	5.00	0.180	305	8.00	200	6.50	160	4.75	125

Pole Information Chart Notes:

(1) All poles utilize 0.75" x 17" x 3" anchor bolts.

(2) All poles are provided with 2.5" x 5" nominal handhole.

(3) Structure weight is a nominal value which includes the pole shaft and base plate only.

(4) Pole base plate dimensions are the same for all poles in the RSP series. See Pole Base and Bolt Circle detail.

(5) Maximum weight and EPA values are based on side mounted fixtures only. Consult factory regarding loading criteria for pole top tenon mounted luminaires and/or brackets.

Philips Wide-Lite Professional Luminaires reserves the right to change specifications and dimensions without notice. Lamp and electrical specifications / availability subject to change by manufacturer without notice. Please refer to detailed specification sheets for additional information and spec details.

1611 Clovis Barker Road • San Marcos, TX 78666 • Phone: 512.392.5821 • Fax: 512.753.1122 • www.wide-lite.com

© 2011 Philips Group. All rights reserved.

Bulletin No. WLSP0270E0411

PHILIPS
WideLite

Pole-RSP Series

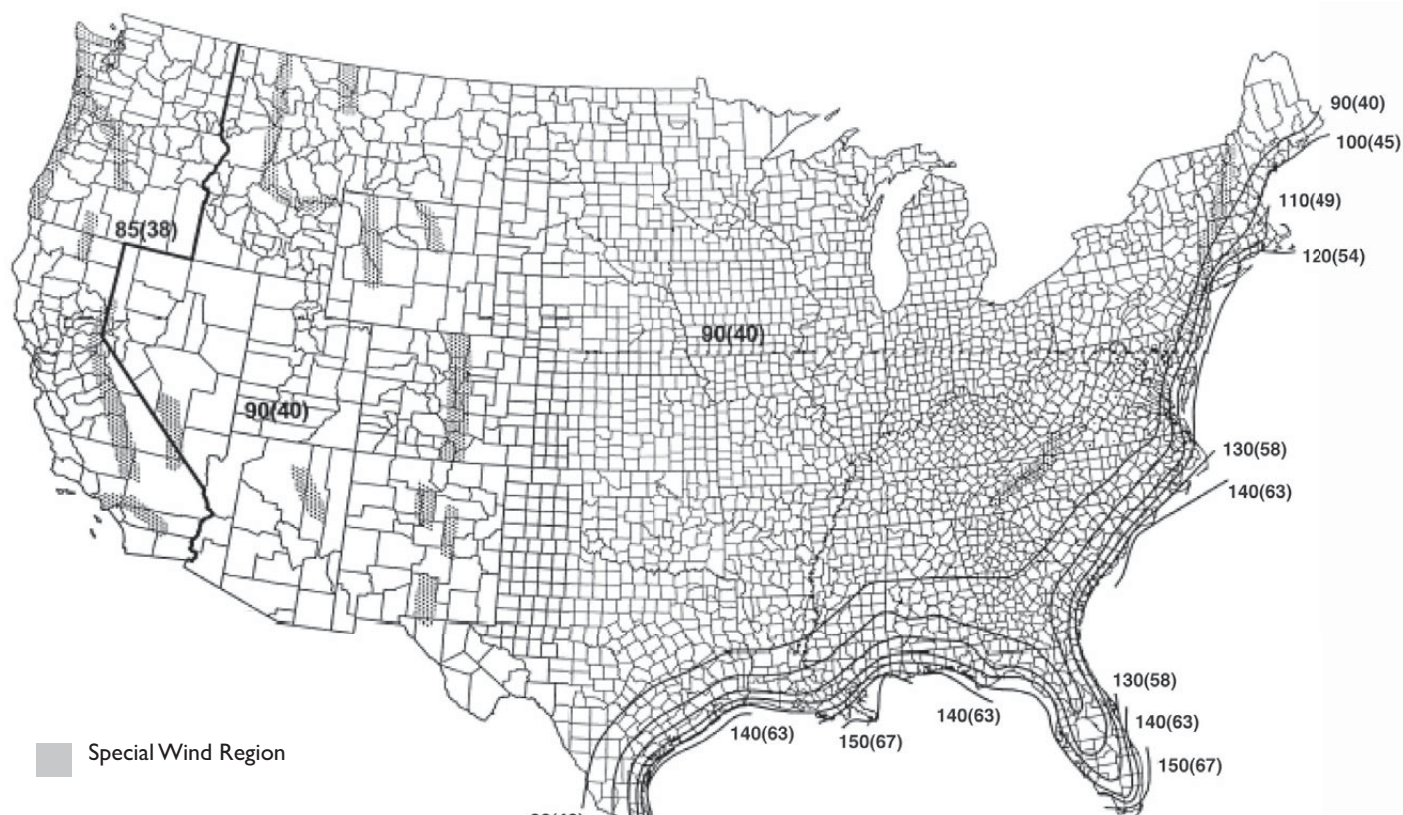
Round Straight Steel Pole

Type:

Job:

Page 3 of 4

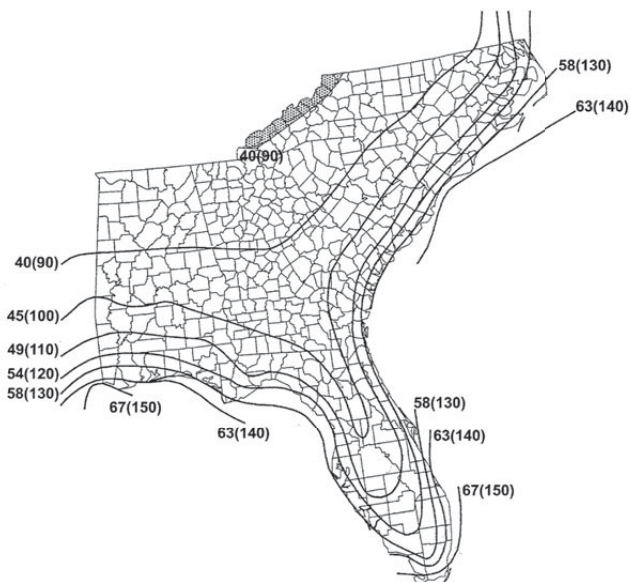
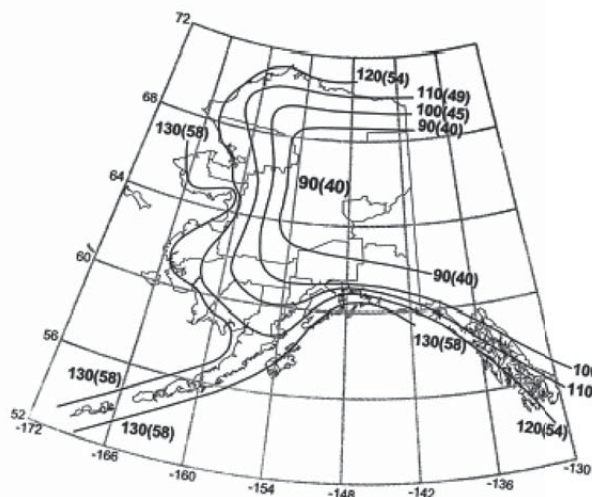
Wind Velocity Map



Location	V mph	(m/s)
Hawaii	105	(47)
Puerto Rico	145	(65)
Guam	170	(76)
Virgin Islands	145	(65)
American Samoa	125	(56)

Notes:

1. Values are nominal design 3-second gust wind speeds in miles per hour (m/s) at 33 ft (10m) above ground for Exposure C category.
2. Linear interpolation between wind contours is permitted.
3. Island and coastal areas outside the last contour shall use the last wind speed contour of the coastal area.
4. Mountainous terrain, gorges, ocean promontories, and special wind regions shall be examined for unusual wind conditions.



Philips Wide-Lite Professional Luminaires reserves the right to change specifications and dimensions without notice. Lamp and electrical specifications / availability subject to change by manufacturer without notice. Please refer to detailed specification sheets for additional information and spec details.

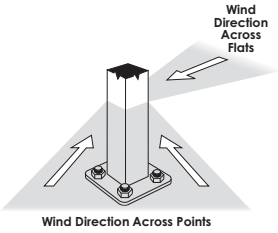
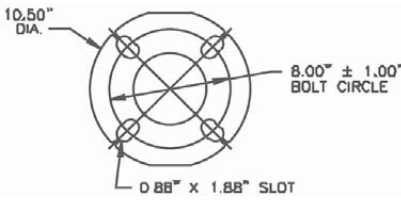
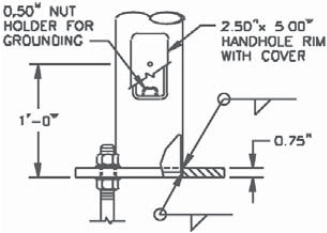
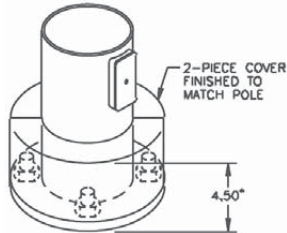
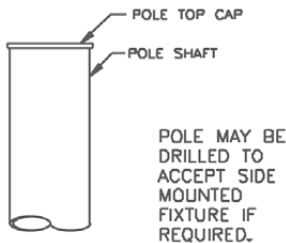
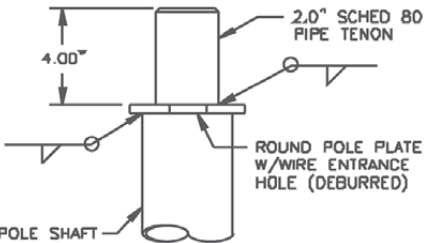
1611 Clovis Barker Road • San Marcos, TX 78666 • Phone: 512.392.5821 • Fax: 512.753.1122 • www.wide-lite.com

© 2011 Philips Group. All rights reserved.

Bulletin No. WLSP0270E0411

Pole-RSP Series

Round Straight Steel Pole

Type:	Job:	Page 4 of 4	
<div>Wind Direction detail</div> <p>Maximum weight and EPA values are determined by analyzing stress from two wind directions as shown.</p> <p>Due to the increased area and reduced section properties, stress levels across the points generally control the allowable loads.</p> 	<div>Bolt Circle detail</div> 	<div>Pole Base and Handhole detail</div> 	<div>Full Base Cover</div> 
	<div>standard Pole Top Cap detail</div> 	<div>T2 Option detail</div> 	
Notes			