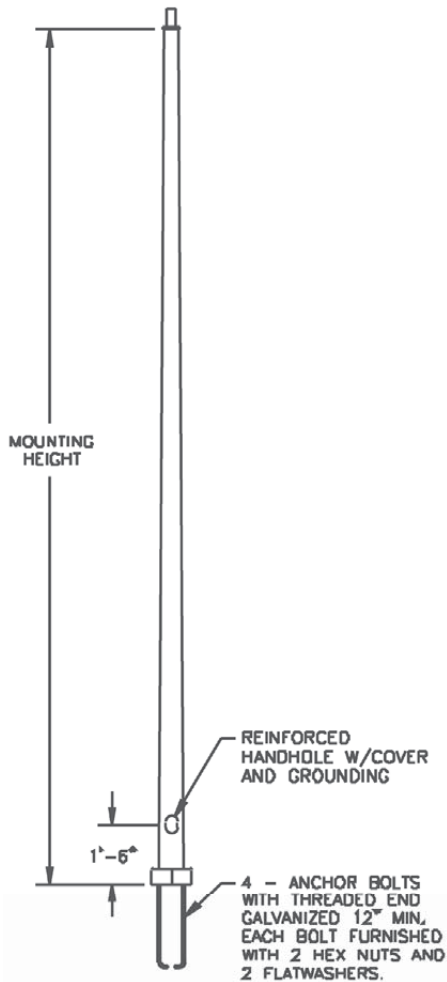


Pole-RTSP Series

Round Tapered Steel Pole

Type:	Job:					Approvals:
Catalog Number:						
-						
Series (pole type and height)	Base O.D.	Gauge (wall thickness)	Finish	Mounting Designation (arm or tenon mounting configuration)	Base Cover (optional)	Date: Page 1 of 4



Round Tapered Steel Pole (RTSP)

See below for ordering example to specify a 60' Round Tapered Tapered Pole, having a 13.00" O.D. Base dimension, 7 gauge wall thickness (bottom section), 11 gauge wall thickness (upper section), Dark Bronze powder coat Finish, with a 2-3/8" O.D. x 4" tall pole top tenon, and the optional base cover.

RTSP60-13.0-7/11-DB-T2-BC

60	Nominal Mounting Height (in Feet)
13.0	Base O.D. (in Inches)
7/11	Wall Thickness (Gauge)
DB	Dark Bronze (Powder Coat Finish)
T2	2-3/8" O.D. x 4" tall Pole Top Tenon (Mounting)
BC	Base Cover (option)

Specifications

Anchor Bolts

Anchor bolts are fabricated from carbon steel conforming to AASHTO M314 Grade-55 or ASTM F1554 Grade-55. Bolts have an "L" bend on one end and are galvanized a minimum of 12 inches on the threaded end. Four anchor bolts are provided per pole. Each anchor bolt is furnished with two hex nuts and two flat washers.

Anchor Base

The anchor base (base plate) is fabricated from structural quality hot rolled carbon steel plate conforming to ASTM A36. The base plate telescopes the pole shaft and is circumferentially welded top and bottom. The base is provided with a slotted anchor bolt opening that enables a range of bolt circles to be utilized. Corresponding bolt circles for each pole type are listed in the Pole Information Chart. See Pole Base Detail.

Pole Shaft

The pole shaft conforms to ASTM A595 Grade-A and is supplied in 11 gauge (0.1196"), 7 gauge (0.1793"), 5 gauge (0.20292"), or 3 gauge (0.2391") thickness. Shafts are of either one-piece or two-piece construction, with a full length longitudinal high frequency electric resistance weld. The shaft is round in cross section having a uniform taper of approximately 0.14 inches per foot of length.

Handhole

The reinforcing handhole rim shall consist of either a nominal 3" x 5" rectangular shaped tubing, or 4" x 6.5" oval shaped pipe material. The 3" x 5" handhole is provided with a steel attachment bar, steel cover, and one round head machine screw. The 4" x 6.5" handhole includes two tabs for mounting a steel cover with hex head attachment screws. Both handhole types are welded in the pole shaft and are located 1'-6" above the base.

Electrical Ground

A nut holder is provided near the handhole and includes a 0.5"-13 UNC hex head bolt and nut.

Nut Covers

Nut covers for anchor bolts are standard and are zinc die cast. Each cover is fastened to the shaft by a 0.25" stainless steel, self-tapping, hex head screw.

Pole Top Tenon

Pole top tenons are standard and are fabricated from structural quality hot rolled carbon steel with a guaranteed minimum yield strength of 30,000 psi. A pole top plate and tenon of weldable grade hot rolled commercial quality carbon steel is circumferentially welded to the top of the pole shaft. This plate provides an internal weather resistant wiring raceway into the pole top tenon. Standard tenon sizes are 2-3/8" O.D. x 4" tall (T2), 3.0" O.D. x 5-5/8" tall (T3), or 4" O.D. x 5-5/8" tall (T4) vertical pipe tenon.

Pole Top Cap and Arm Mounting

An optional removeable top cap is available to be used in conjunction with drilled pole shafts for accommodation of a direct mounted luminaire arm attachment. Specify choice of drill mounting (D1 through D6) for luminaire arm mounting configuration required.

Finish

Standard available finishes are hot-dip galvanized (GV) and polyester powder coat, electrostatically applied and oven cured, in the colors listed.

Fastening Hardware

All structural fasteners are galvanized high strength carbon steel. All other fasteners are galvanized or zinc plated carbon steel or stainless steel.

Design

Consult Wind Velocity Map to ensure suitability for location and application.

Standards (poles) are designed to withstand dead loads and theoretical dynamic loads developed by variable wind speeds, as charted, with an appropriate gust factor under the following conditions:

Wind velocities are based on 10 mph increments from 80 mph through 100 mph.

Note: Standards (poles) to be located in areas of known abnormal conditions require special consideration. For example: coastal areas, airports, and areas of special winds such as the Chinook Winds along the eastern slope of the Rocky Mountains.

Standards (poles) are designed for ground mounted applications. Consult factory for special consideration for mounting on structures (such as bridges and buildings). Height correction factors and drag coefficients are applied to the entire structure. An appropriate safety factor is maintained based on the minimum yield strength of the material incorporated into the standard.

Pole-RTSP Series

Round Tapered Steel Pole

Type:	Job:	Page 2 of 4
-------	------	-------------

Series/Pole Height ⁽¹⁾	Base ⁽²⁾	Gauge ⁽³⁾	Finish	Mounting Designation Options	Base Cover
<input type="checkbox"/> RTSP20 20' pole	<input type="checkbox"/> 5.9 <input type="checkbox"/> 10.0	<input type="checkbox"/> 11	<input type="checkbox"/> GV Galvanize	Tenon Mount Configurations ⁽⁶⁾ <input type="checkbox"/> T2 2.375" (2-3/8") O.D. x 4.0" tall tenon ⁽⁷⁾	<input type="checkbox"/> BC optional base cover
<input type="checkbox"/> RTSP25 25' pole	<input type="checkbox"/> 6.5 <input type="checkbox"/> 11.0	<input type="checkbox"/> 7	<input type="checkbox"/> GR ⁽⁵⁾ Gray	<input type="checkbox"/> T3 3.0" O.D. x 5.625" (5-5/8") tall tenon	
<input type="checkbox"/> RTSP30 30' pole	<input type="checkbox"/> 6.6 <input type="checkbox"/> 12.0	<input type="checkbox"/> 3	<input type="checkbox"/> SA ⁽⁵⁾ Satin Aluminum	<input type="checkbox"/> T4 4.0" O.D. x 5.625" (5-5/8") tall tenon	
<input type="checkbox"/> RTSP35 35' pole	<input type="checkbox"/> 7.0 <input type="checkbox"/> 12.5	<input type="checkbox"/> 7/11 ⁽⁴⁾	<input type="checkbox"/> DB ⁽⁵⁾ Dark Bronze	<input type="checkbox"/> PL 2.375" (2-3/8") O.D. plain top	
<input type="checkbox"/> RTSP39 39' pole	<input type="checkbox"/> 7.3 <input type="checkbox"/> 13.0	<input type="checkbox"/> 5/7 ⁽⁴⁾	<input type="checkbox"/> BLK ⁽⁵⁾ Black	Arm Mount Configurations ⁽⁸⁾ <input type="checkbox"/> D1-DT(Y) 1 @ 90°, specify drill template (Y)	
<input type="checkbox"/> RTSP45 45' pole	<input type="checkbox"/> 7.8	<input type="checkbox"/> 7/7 ⁽⁴⁾	<input type="checkbox"/> WHT ⁽⁵⁾ White	<input type="checkbox"/> D2-DT(Y) 2 @ 180°, specify drill template (Y)	
<input type="checkbox"/> RTSP50 50' pole	<input type="checkbox"/> 8.0			<input type="checkbox"/> D3-DT(Y) 3 @ 120°, specify drill template (Y)	
<input type="checkbox"/> RTSP55 55' pole	<input type="checkbox"/> 8.5			<input type="checkbox"/> D4-DT(Y) 4 @ 90°, specify drill template (Y)	
<input type="checkbox"/> RTSP60 60' pole	<input type="checkbox"/> 9.0			<input type="checkbox"/> D5-DT(Y) 2 @ 90°, specify drill template (Y)	
<input type="checkbox"/> RTSP65 65' pole	<input type="checkbox"/> 9.5			<input type="checkbox"/> D6-DT(Y) 3 @ 90°, specify drill template (Y)	
<input type="checkbox"/> RTSP70 70' pole					

(1) Round Tapered Steel Pole Series. Consult Pole Information Chart for available base-to-top taper and gauge.

(2) Pole base O.D. in inches. See chart for top O.D.

(3) See chart for availability with desired pole height.

(4) Two section pole. Bottom section is the heavier gauge material.

(5) Powder coat finish. Consult factory for special colors or finishes.

(6) T2 suitable for use with all poles.

T3 suitable for poles with pole top O.D. of 4" or more.

T4 suitable for use with 6" pole top O.D. only. Standard pole top pipe tenon options listed. Consult factory to specify custom size.

(7) 4-1/2" tall tenon available as special order. Consult factory when specifying with PTRD or PISQ (EAL post top mounting options).

(8) Drill Mounting patterns for Round Pole. Specify appropriate Drill Template (Y) for intended luminaire to be arm mounted.

Pole Information Chart ^(1,2)

Nominal Mounting Height (ft)	Pole Shaft					Pole Base			Anchor Bolts	80 MPH w/1.3 Gust		90 MPH w/1.3 Gust		100 MPH w/1.3 Gust	
	Catalog Number	Base O.D. (in)	Top O.D. (in)	Wall Thickness (ga)	Struct. Weight (lbs)	Bolt Circle Dia. (in)	Circle ± (in)	Square (in)	Thk. (in)	Max. EPA (ft ²)	Max. Weight (lbs)	Max. EPA (ft ²)	Max. Weight (lbs)	Max. EPA (ft ²)	Max. Weight (lbs)
20	RTSP20- 5.9- 11 -XXX-XX-XX ⁽⁴⁾	5.9	3.1	11	140	9.0	0.5	10.00	0.88	19.3	482	15.1	377	12.2	305
	RTSP20- 6.5- 11 -XXX-XX-XX	6.5	3.7	11	160	9.5	0.5	10.50	0.88	24.2	605	19.3	482	15.6	390
25	RTSP25- 5.9- 11 -XXX-XX-XX ⁽⁴⁾	5.9	2.4	11	155	9.0	0.5	10.00	0.88	12.5	312	9.9	247	8.0	200
	RTSP25- 7.0- 11 -XXX-XX-XX	7.0	3.5	11	200	10.0	0.5	10.88	0.88	20.3	507	16.2	405	13.1	327
	RTSP25- 7.0- 7 -XXX-XX-XX	6.5	3.5	7	280	10.0	0.5	10.88	1.00	30.5	760	24.0	625	19.8	495
30	RTSP30- 6.6- 11 -XXX-XX-XX	6.6	2.4	11	200	9.5	0.5	10.50	0.88	11.7	292	9.3	232	7.5	187
	RTSP30- 8.0- 11 -XXX-XX-XX	8.0	3.8	11	265	11.0	0.5	11.50	0.88	18.9	473	14.9	373	12.0	300
	RTSP30- 8.0- 7 -XXX-XX-XX	8.0	3.8	7	380	11.0	0.5	11.50	1.25	33.5	838	27.0	675	22.0	550
35	RTSP35- 7.3- 11 -XXX-XX-XX	7.3	2.4	11	250	10.5	0.5	11.25	0.88	11.2	280	8.9	222	7.1	177
	RTSP35- 8.5- 11 -XXX-XX-XX	8.5	3.6	11	315	11.5	0.5	12.00	1.00	18.9	472	15.1	377	12.2	305
	RTSP35- 9.5- 11 -XXX-XX-XX	9.5	4.6	11	370	13.0	0.5	13.00	1.00	23.2	580	18.2	455	14.5	363
39	RTSP39- 7.8- 11 -XXX-XX-XX	7.8	2.4	11	285	11.0	0.5	11.50	0.88	10.7	267	8.5	212	6.6	165
	RTSP39- 9.0- 11 -XXX-XX-XX	9.0	3.6	11	355	12.5	0.5	12.38	1.00	17.2	430	13.5	338	10.8	270
	RTSP39- 9.0- 7 -XXX-XX-XX	9.0	3.6	7	515	12.5	0.5	12.38	1.25	28.5	715	23.0	575	19.0	475
45	RTSP45-10.0- 11 -XXX-XX-XX	10.0	3.7	11	450	13.5	0.5	14.00	1.00	17.4	435	13.5	338	10.6	265
	RTSP45-10.0- 11 -XXX-XX-XX	10.0	3.7	7	650	13.5	0.5	14.00	1.25	28.5	715	23.0	575	19.0	475
	RTSP45-11.0- 7 -XXX-XX-XX	11.0	4.7	7	780	15.0	0.5	16.50	1.50	35.7	893	28.0	700	22.3	558
50	RTSP50-10.0- 11 -XXX-XX-XX	10.0	3.0	11	475	13.5	0.5	14.00	1.00	13.2	330	10.6	265	8.3	208
	RTSP50-10.0- 7 -XXX-XX-XX	10.0	3.0	7	680	13.5	0.5	14.00	1.25	20.5	512	16.5	412	13.6	340
	RTSP50-11.0- 7 -XXX-XX-XX	11.0	4.0	7	812	15.0	0.5	16.50	1.50	29.9	748	23.5	588	18.6	465
	RTSP50-13.0- 7 -XXX-XX-XX	13.0	6.0	7	1020	17.0	N/A	18.00	1.50	50.4	1260	39.7	992	31.4	785
	RTSP50-13.0- 3 -XXX-XX-XX	13.0	6.0	3	1335	17.5	N/A	18.50	1.75	69.2	1730	55.0	1375	44.2	1105
55	RTSP55-11.0-7/11-XXX-XX-XX	11.0	3.5	7/11	890	15.0	0.5	16.50	1.50	21.6	540	17.7	442	14.7	367
	RTSP55-12.0-7/11-XXX-XX-XX	12.0	4.5	7/11	975	16.0	N/A	17.00	1.50	32.2	805	25.9	647	21.1	527
	RTSP55-12.5-5/7-XXX-XX-XX	12.5	5.2	5/7	1225	16.5	N/A	17.50	1.50	43.8	1095	35.0	875	28.6	715
60	RTSP60-12.0-7/7-XXX-XX-XX	12.0	4.0	7/7	1060	16.0	N/A	17.00	1.50	25.9	647	20.7	517	16.8	420
	RTSP60-13.0-7/11-XXX-XX-XX	13.0	4.8	7/11	1075	17.0	N/A	18.00	1.50	30.1	752	24.5	612	20.2	505
	RTSP60-12.5-5/7-XXX-XX-XX	12.5	4.5	5/7	1275	16.5	N/A	17.50	1.50	34.0	850	27.6	690	22.6	565
65	RTSP65-13.0-7/7-XXX-XX-XX	13.0	4.3	7/7	1200	17.0	N/A	18.00	1.50	27.3	682	22.0	550	17.9	447
	RTSP65-13.0-5/7-XXX-XX-XX	13.0	4.3	5/7	1400	17.0	N/A	18.00	1.50	30.8	770	24.8	620	20.4	510
70	RTSP70-13.0-7/7-XXX-XX-XX	13.0	3.6	7/7	1270	17.0	N/A	18.00	1.50	20.6	515	16.7	417	13.7	342
	RTSP70-13.0-5/7-XXX-XX-XX	13.0	3.6	5/7	1440	17.0	N/A	18.00	1.50	23.6	590	19.2	480	15.8	395

Pole Information Chart Notes:

(1) Structure weight is a nominal value which includes the pole shaft and base plate only.

(2) Designs showing two shaft gauges indicates structure is provided as a two-piece, field-assembled unit. Heavier gauge is the bottom section.

(3) Maximum weight and EPA values are based on pole top tenon mounted fixtures and/or brackets having a centroid 2'-6" above the nominal mounting height. Consult factory regarding loading criteria for side mounted luminaires.

(4) Poles provided with 3" x 5" nominal handhole; all others 4" x 6.5" nominal.

Philips Wide-Lite Professional Luminaires reserves the right to change specifications and dimensions without notice. Lamp and electrical specifications / availability subject to change by manufacturer without notice. Please refer to detailed specification sheets for additional information and spec details.

1611 Clovis Barker Road • San Marcos, TX 78666 • Phone: 512.392.5821 • Fax: 512.753.1122 • www.wide-lite.com

© 2011 Philips Group. All rights reserved.

Bulletin No. WLSP0271D0411

PHILIPS
WideLite

Pole-RTSP Series

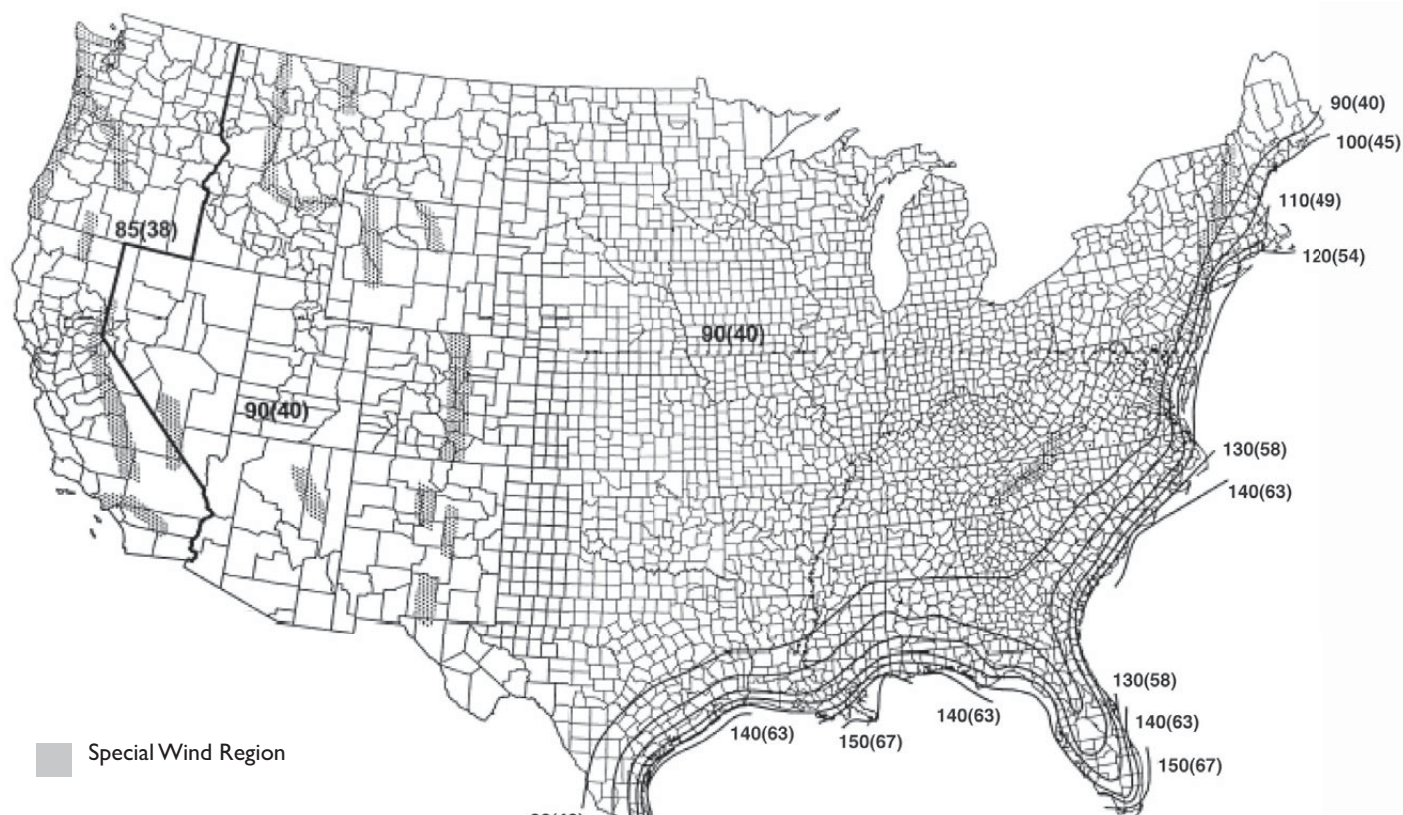
Round Tapered Steel Pole

Type:

Job:

Page 3 of 4

Wind Velocity Map



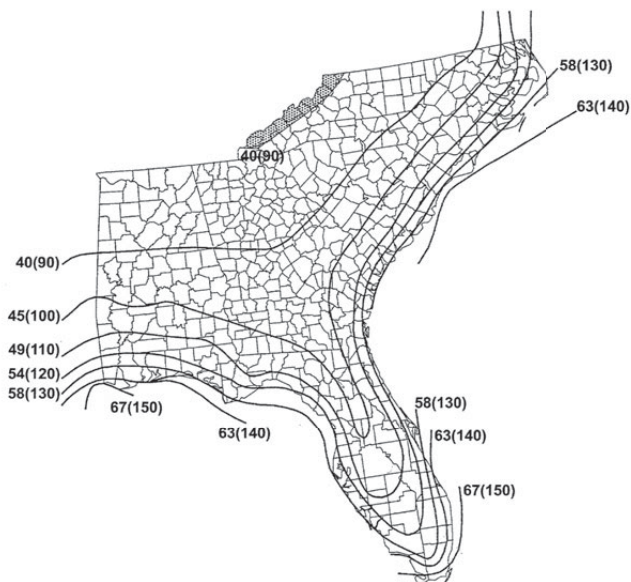
Special Wind Region

Location	V mph	(m/s)
Hawaii	105	(47)
Puerto Rico	145	(65)
Guam	170	(76)
Virgin Islands	145	(65)
American Samoa	125	(56)

90(40)
100(45)
110(49)
120(54)
130(58)
140(63)
150(67)

Notes:

1. Values are nominal design 3-second gust wind speeds in miles per hour (m/s) at 33 ft (10m) above ground for Exposure C category.
2. Linear interpolation between wind contours is permitted.
3. Island and coastal areas outside the last contour shall use the last wind speed contour of the coastal area.
4. Mountainous terrain, gorges, ocean promontories, and special wind regions shall be examined for unusual wind conditions.



Philips Wide-Lite Professional Luminaires reserves the right to change specifications and dimensions without notice. Lamp and electrical specifications / availability subject to change by manufacturer without notice. Please refer to detailed specification sheets for additional information and spec details.

1611 Clovis Barker Road • San Marcos, TX 78666 • Phone: 512.392.5821 • Fax: 512.753.1122 • www.wide-lite.com

© 2011 Philips Group. All rights reserved.

Bulletin No. WLSP0271D0411

Pole-RTSP Series

Round Tapered Steel Pole

Type:

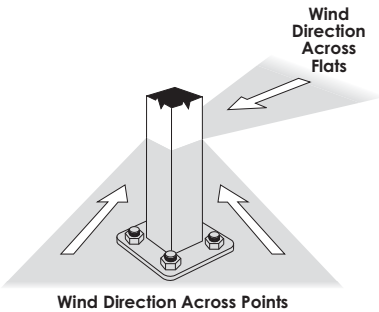
Job:

Page 4 of 4

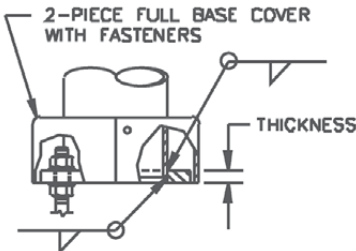
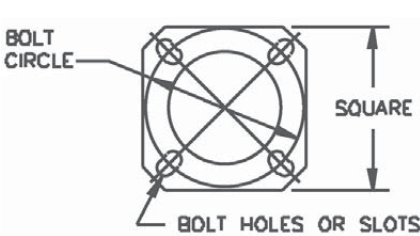
Wind Direction detail

Maximum weight and EPA values are determined by analyzing stress from two wind directions as shown.

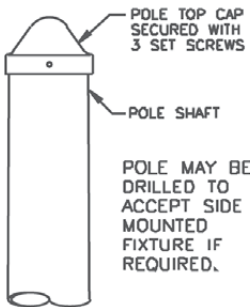
Due to the increased area and reduced section properties, stress levels across the points generally control the allowable loads.



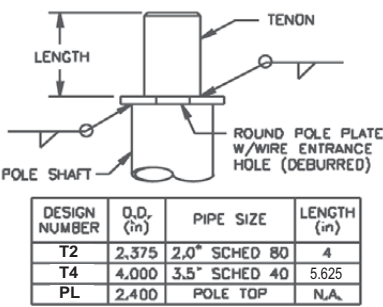
Pole Base and Bolt Circle detail



optional Pole Top Cap detail



standard Tenon detail



Notes